

MOUNT VERNON, TEXAS

AL-9047 (FAA)

23054

APP CRS	Rwy Idg	3900
130°	TDZE	408
	Apt Elev	412

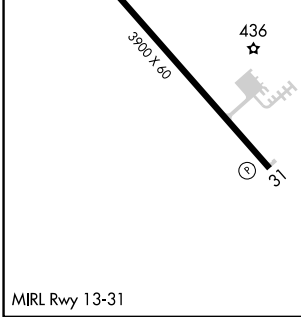
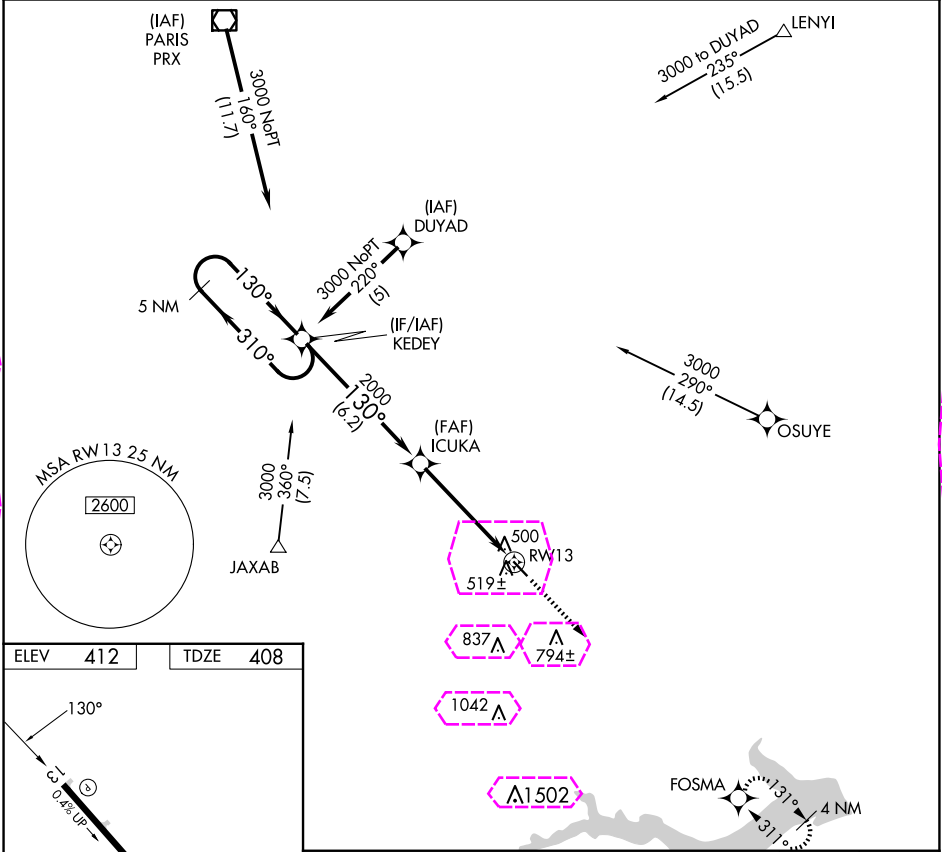
# RNAV (GPS) RWY 13

FRANKLIN COUNTY (F53)

**NA** DME/DME RNP-0.3 NA. Use Mount Pleasant Rgnl altimeter setting; if not received, procedure NA. Procedure NA at night. Helicopter visibility reduction below 1 SM NA.

MISSED APPROACH: Climb to 3000 direct FOSMA and hold.

OSA AWOS-3 119.775	FORT WORTH CENTER 132.025 360.75	UNICOM 123.0 (CTAF)
-----------------------	-------------------------------------	------------------------



5 NM Holding Pattern		VGS and descent angles not coincident (VGS Angle 3.00/TCH 37).		3000	FOSMA
3000 ← 310°		130° →		↑	✧
KEDEY		ICUKA		RW13	
2000		3.04°		TCH 40	
6.2 NM		4.9 NM			
CATEGORY	A	B	C	D	
LNAV MDA	820-1	412 (500-1)	NA	NA	
CIRCLING	940-1 528 (600-1)	980-1 568 (600-1)	NA	NA	

MOUNT VERNON, TEXAS  
Orig-B 25MAR21

33°13'N-095°14'W

# RNAV (GPS) RWY 13

SC-2, 10 JUL 2025 to 07 AUG 2025

SC-2, 10 JUL 2025 to 07 AUG 2025

