

TIOGA, NORTH DAKOTA

AL-9025 (FAA)

20002

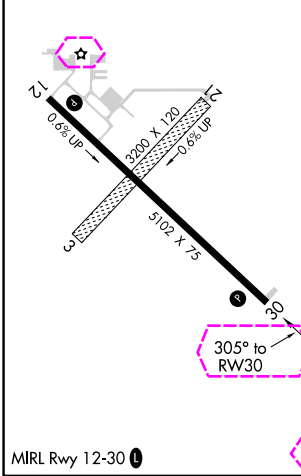
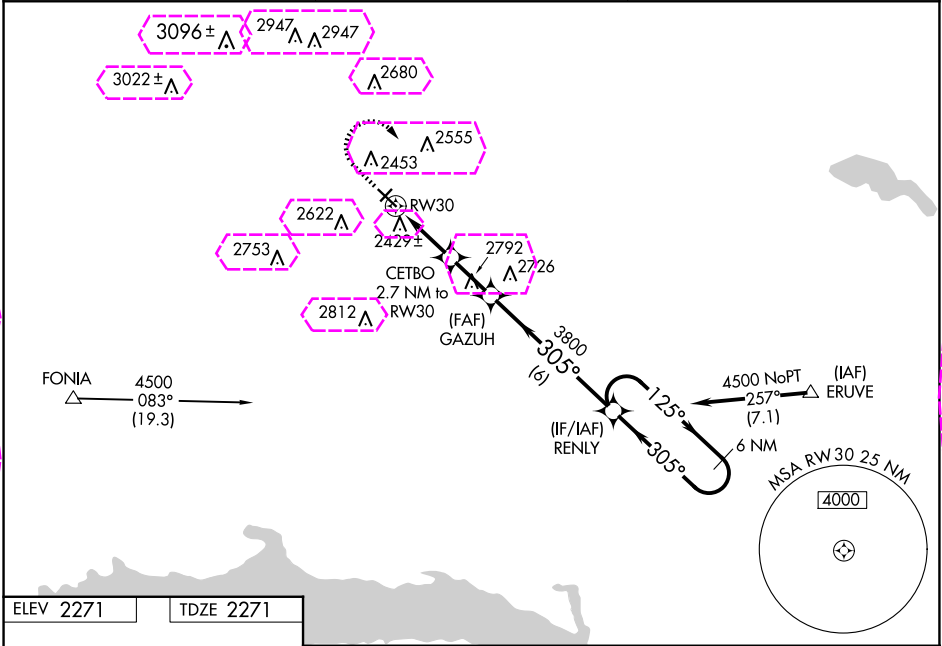
WAAS CH <b>56630</b> <b>W30A</b>	APP CRS <b>305°</b>	Rwy Idg TDZE <b>2271</b> Apt Elev <b>2271</b>
--	------------------------	---

# RNAV (GPS) RWY 30

TIOGA MUNI (D60)

RNP APCH.	MISSED APPROACH: Climb to 3200 then climbing right turn to 4500 direct RENLY and hold.
<p>For uncompensated Baro-VNAV systems, LNAV/VNAV NA below -19°C or above 54°C. Rwy 30 helicopter visibility reduction below 3/4 SM NA. Circling NA to Rwys 3 and 21.</p>	

AWOS-3 <b>118.575</b>	MINNEAPOLIS CENTER <b>127.6 279.6</b>	CTAF <b>122.9</b>
--------------------------	--	----------------------



3200	4500	RENLY	VGSI and RNAV glidepath not coincident (VGSI Angle 3.00/TCH 25).	
*LNAV only		GAZUH	RENLY 6 NM Holding Pattern	
CETBO 2.7 NM to RW30		3800	125° 4500	
RW30		3160*	305° 3800	
2.7 NM		2 NM	6 NM	
CATEGORY	A	B	C	D
LPV DA	2521-1 250 (300-1)			
LNAV/VNAV DA	2712-1 3/8 441 (500-1 3/8)			
LNAV MDA	2720-1 449 (500-1)		2720-1 3/8 449 (500-1 3/8)	
<b>CIRCLING</b>	2820-1 549 (600-1)	2980-1 709 (800-1)	2980-2 709 (800-2)	3000-2 1/4 729 (800-2 1/4)

TIOGA, NORTH DAKOTA  
Amdt 1C 05DEC19

48°23'N-102°54'W

# RNAV (GPS) RWY 30

TIOGA, NORTH DAKOTA

AL-9025 (FAA)

25219

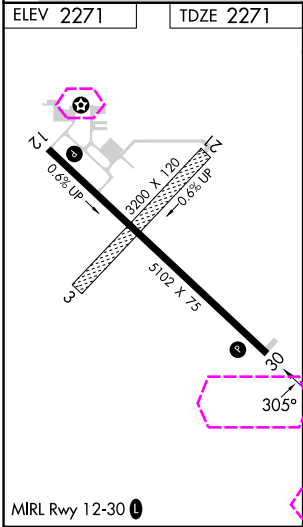
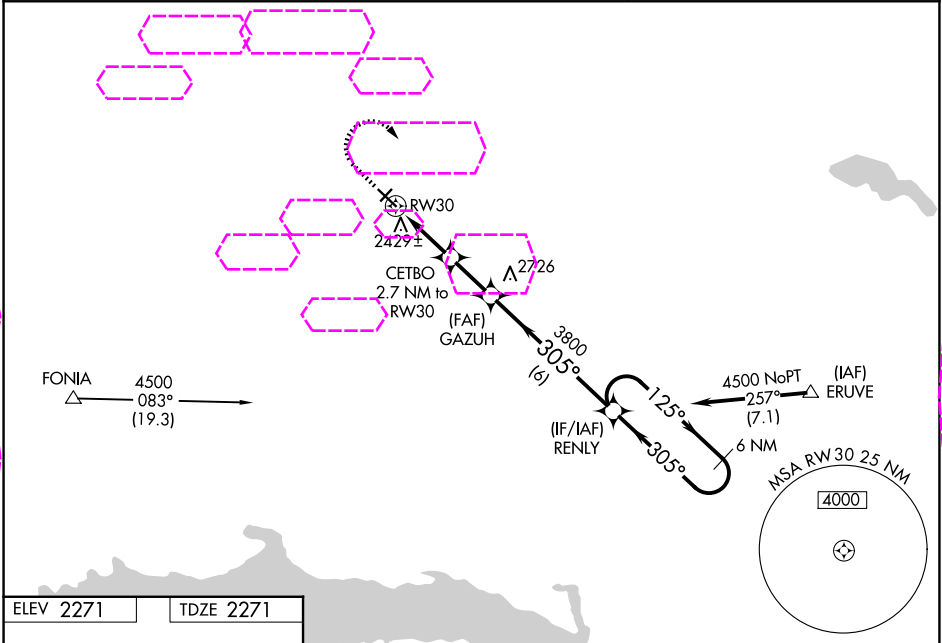
WAAS CH <b>56630</b> <b>W30A</b>	APP CRS <b>305°</b>	Rwy Ldg TDZE <b>2271</b> Apt Elev <b>2271</b>
--	------------------------	---

# RNAV (GPS) RWY 30

TIOGA MUNI (D60)

RNP APCH.	MISSED APPROACH: Climb to 3200 then climbing right turn to 4500 direct RENLY and hold.
For uncompensated Baro-VNAV systems, LNAV/VNAV NA below -19°C or above 54°C. Rwy 30 helicopter visibility reduction below 3/4 SM NA. Circling NA to Rwys 3 and 21.	

AWOS-3 <b>118.575</b>	MINNEAPOLIS CENTER <b>127.6 279.6</b>	CTAF <b>122.9 0</b>
--------------------------	--	------------------------



3200 ↑	4500 ↗	RENLY ✦	VGSI and RNAV glidepath not coincident (VGSI Angle 3.00/TCH 25).			
*LNAV only			GAZUH 3800	RENLY	6 NM Holding Pattern	
CETBO 2.7 NM to RW30		3160*		125° →	4500	
RW30		305°		← 305°		
2.7 NM		2 NM		6 NM		GP 3.00° TCH 40
CATEGORY	A		B		C	D
LPV DA	2521-1 250 (300-1)					
LNAV/ VNAV DA	2712-1 <sup>3</sup> / <sub>8</sub> 441 (500-1 <sup>3</sup> / <sub>8</sub> )					
LNAV MDA	2720-1 449 (500-1)			2720-1 <sup>3</sup> / <sub>8</sub> 449 (500-1 <sup>3</sup> / <sub>8</sub> )		
CIRCLING	2820-1 549 (600-1)	2980-1 709 (800-1)		2980-2 709 (800-2)	3000-2 <sup>1</sup> / <sub>4</sub> 729 (800-2 <sup>1</sup> / <sub>4</sub> )	

TIOGA, NORTH DAKOTA  
Amdt 1C 05DEC19

48°23'N-102°54'W

# RNAV (GPS) RWY 30

TIOGA MUNI (D60)

NC-1, 07 AUG 2025 to 04 SEP 2025

NC-1, 07 AUG 2025 to 04 SEP 2025