

TIOGA, NORTH DAKOTA

AL-9025 (FAA)

20142

WAAS CH 82139 W12A	APP CRS 125°	Rwy Idg TDZE Apt Elev	5102 2253 2271
--	------------------------	-----------------------------	---

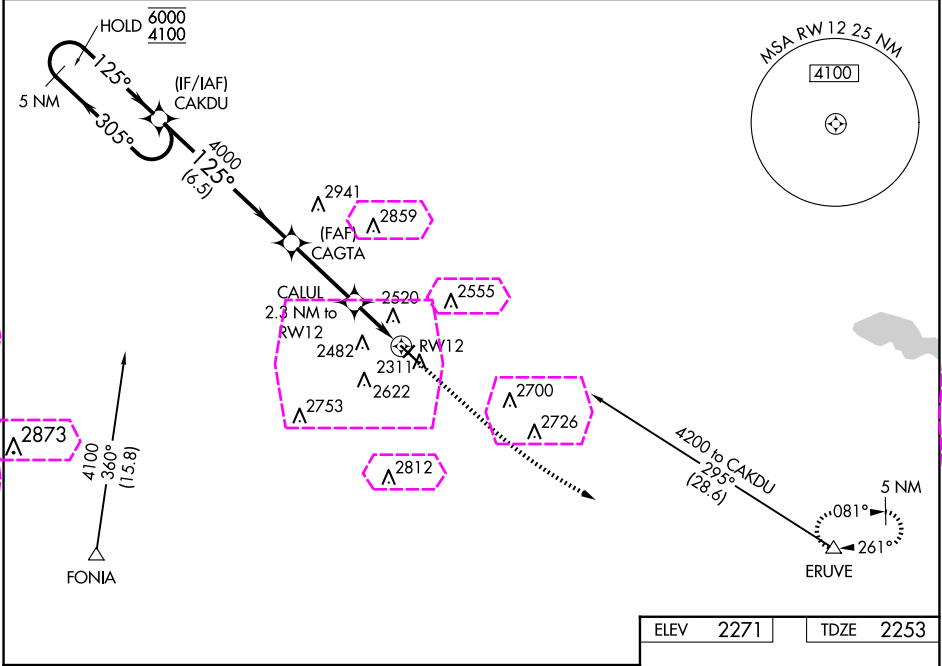
RNAV (GPS) RWY 12

TIOGA MUNI (D60)

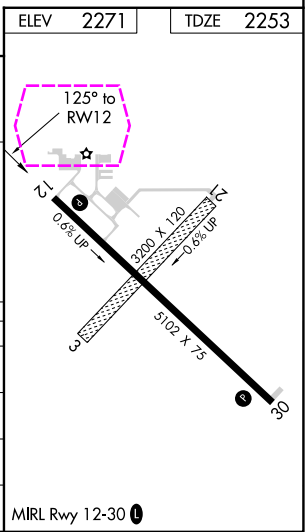
RNP APCH.
Circling NA to Rwy 3 and 21. For uncompensated Baro-VNAV systems, procedure NA below -19°C or above 54°C. When local altimeter setting not received, procedure NA.

MISSED APPROACH: Climb to 2720 then climbing left turn to 5000 direct ERUVE and hold.

AWOS-3 118.575	MINNEAPOLIS CENTER 127.6 279.6	CTAF 122.9 0
--------------------------	--	------------------------



5 NM Holding Pattern		VGSI and RNAV glidepath not coincident (VGSI Angle 3.00/TCH 26).		2720	5000	ERUVE
		CAKDU		CAGTA	CALUL 2.3 NM to RW12	*1.6 NM to RW12
GP 3.00° TCH 45		4000		*3000		
		6.5 NM		3.1 NM	0.7	1.6 NM
CATEGORY	A	B	C	D		
LPV DA	2503-1		250 (300-1)			
RNAV/DA	2819-2		566 (600-2)			
RNAV MDA	2780-1 527 (600-1)		2780-1½ 527 (600-1½)			
CIRCLING	2820-1 549 (600-1)	2980-1 709 (800-1)	2980-2 709 (800-2)	3000-2¼ 729 (800-2¼)		



TIOGA, NORTH DAKOTA
Orig-B 21MAY20

48°23'N-102°54'W

RNAV (GPS) RWY 12

TIOGA MUNI (D60)

TIOGA, NORTH DAKOTA

AL-9025 (FAA)

25219

WAAS CH 82139 W12A	APP CRS 125°	Rwy Ldg TDZE 2253 Apt Elev 2271
--	------------------------	---

RNAV (GPS) RWY 12

TIOGA MUNI (D60)

RNP APCH.

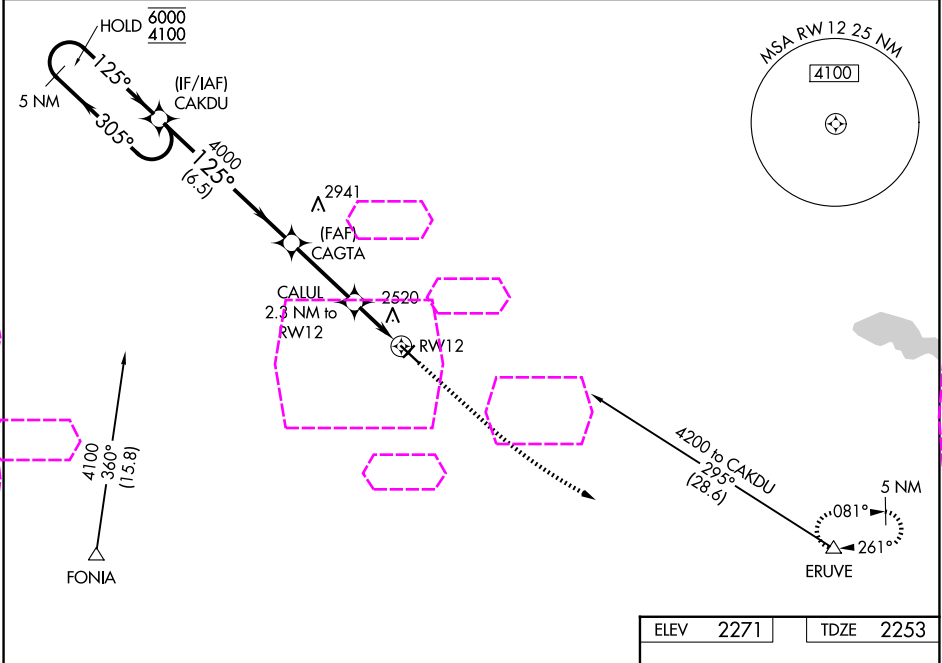
▼

⚠

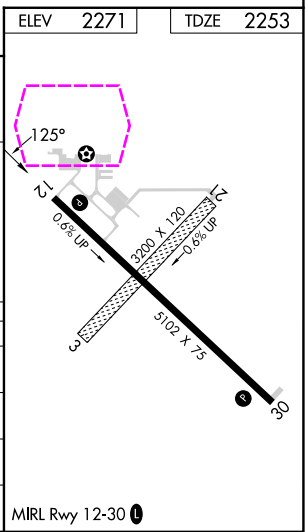
Circling NA to Rwys 3 and 21. For uncompensated Baro-VNAV systems, procedure NA below -19°C or above 54°C.
When local altimeter setting not received, procedure NA.

MISSED APPROACH: Climb to 2720 then climbing left turn to 5000 direct ERUVE and hold.

AWOS-3 118.575	MINNEAPOLIS CENTER 127.6 279.6	CTAF 122.9 0
--------------------------	--	------------------------



5 NM Holding Pattern		VGSI and RNAV glidepath not coincident (VGSI Angle 3.00/TCH 26).		2720	5000	ERUVE
CAKDU		CAGTA		* LNAV only		
6000 4100 305° 125°		4000		CALUL 2.3 NM to RW12		
GP 3.00° TCH 45		* 3000		* 1.6 NM to RW12		
		6.5 NM		3.1 NM		
				0.7 NM		
				1.6 NM		
CATEGORY	A	B	C	D		
LPV DA	2503-1		250 (300-1)			
LNAV/VNAV DA	2819-2		566 (600-2)			
LNAV MDA	2780-1 527 (600-1)		2780-1½ 527 (600-1½)			
CIRCLING	2820-1 549 (600-1)		2980-1 709 (800-1)		2980-2 709 (800-2)	
					3000-2¼ 729 (800-2¼)	



TIOGA, NORTH DAKOTA
Orig-B 21MAY20

48°23'N-102°54'W

TIOGA MUNI (D60)

RNAV (GPS) RWY 12

NC-1, 07 AUG 2025 to 04 SEP 2025

NC-1, 07 AUG 2025 to 04 SEP 2025