

| | | |
|--|------------------------|---|
| WAAS CH 63047 W31A | APP CRS 308° | Rwy Ldg 3800 TDZE 1951 Apt Elev 1953 |
|--|------------------------|---|

RNAV (GPS) RWY 31
CROSBY MUNI (D50)

RNP APCH - GPS.

T Circling NA to Rwy 3 and 21. For uncompensated Baro-VNAV
A systems, LNAV/VNAV NA below -18°C or above 54°C.

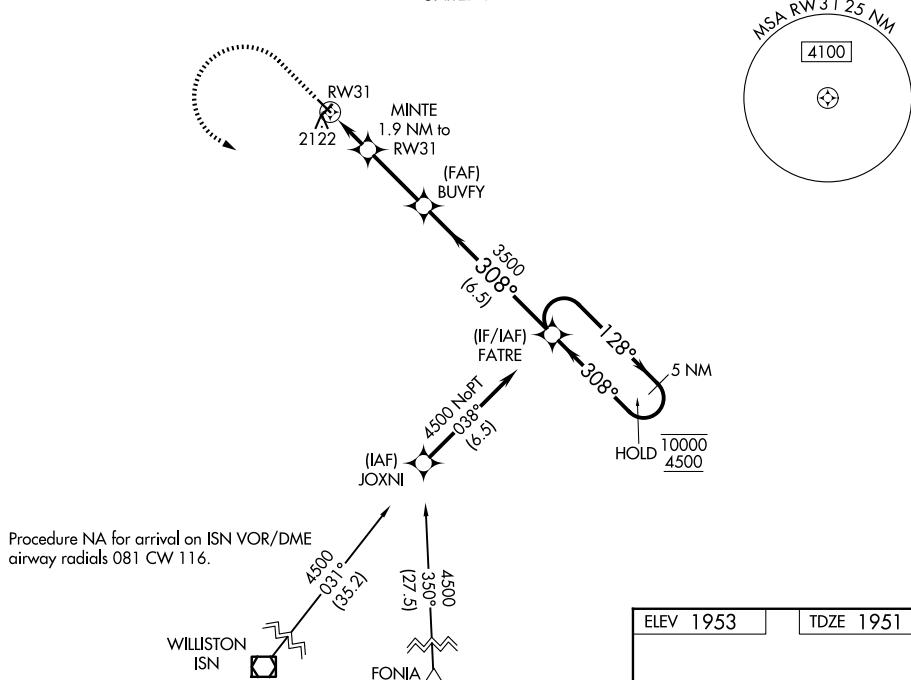
MISSED APPROACH: Climb to 2500 then climbing left turn to 4500 direct FATRE and hold.

AWOS-3
118.025

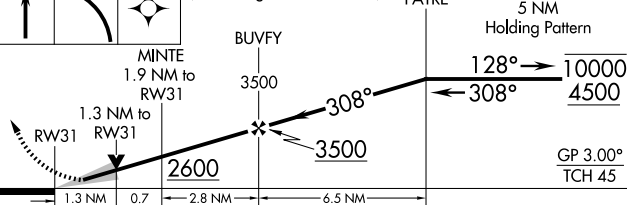
SALT LAKE CITY CENTER
126.85 305.2

CTAF
122,90

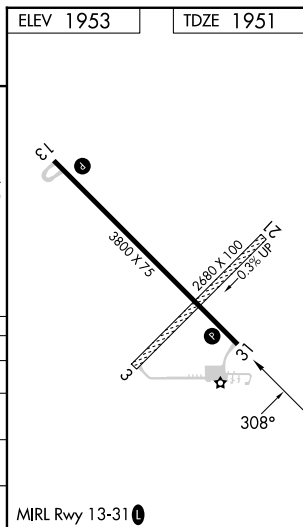
| | CANADA | UNITED STATES |
|----------------------------------|-------------------|-------------------|
| 1. <i>Age</i> | 18-24 | 18-24 |
| 2. <i>Gender</i> | Male | Male |
| 3. <i>Ethnicity</i> | White | White |
| 4. <i>Religion</i> | Catholic | Catholic |
| 5. <i>Marital Status</i> | Married | Married |
| 6. <i>Education</i> | High School | High School |
| 7. <i>Income</i> | \$10,000-\$14,999 | \$10,000-\$14,999 |
| 8. <i>Occupation</i> | Managerial | Managerial |
| 9. <i>Home Ownership</i> | Own | Own |
| 10. <i>Auto Ownership</i> | Own | Own |
| 11. <i>Travel Frequency</i> | Once a year | Once a year |
| 12. <i>Travel Purpose</i> | Business | Business |
| 13. <i>Travel Companion</i> | Alone | Alone |
| 14. <i>Travel Duration</i> | 1-3 days | 1-3 days |
| 15. <i>Travel Destination</i> | Domestic | Domestic |
| 16. <i>Travel Mode</i> | Car | Car |
| 17. <i>Travel Accommodation</i> | Hotel | Hotel |
| 18. <i>Travel Expense</i> | \$500-\$999 | \$500-\$999 |
| 19. <i>Travel Satisfaction</i> | Satisfied | Satisfied |
| 20. <i>Travel Recommendation</i> | Yes | Yes |



| | | | |
|------|------|-------|--|
| 2500 | 4500 | FATRE | VGSI and RNAV glidepath not coincident (VGSI Angle 3.00/TCH 33). FATRE |
|------|------|-------|--|



| CATEGORY | A | B | C | D |
|-----------------|-----------------------|-----------------------|-------------------------|-------------------------|
| LPV DA | 2201-1 250 (300-1) | | | |
| LNAV/DA VNAV | 2365-1½ 414 (500-1½) | | | |
| LNAV MDA | 2380-1 429 (500-1) | | 2380-1¼ 429 (500-1¼) | |
| CIRCLING | 2440-1 487 (500-1) | 2540-1 587 (600-1) | 2540-1½ 587 (600-1½) | 2640-2¼ 687 (700-2¼) |



CROSBY, NORTH DAKOTA
Amdt 1 07AUG25

48°56'N-103°18'W

CROSBY MUNI (D50)

RNAV (GPS) RWY 31

NC-1, 07 AUG 2025 to 04 SEP 2025