

MILLINGTON, TENNESSEE

AL-9016 (FAA)

24137

WAAS CH 93924 W36A	APP CRS 005°	Rwy Idg 3499 TDZE 246 Apt Elev 247
--	------------------------	---

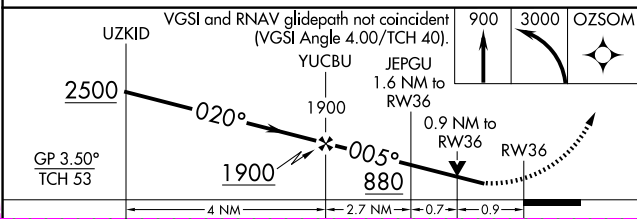
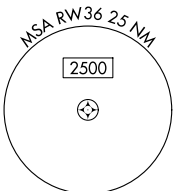
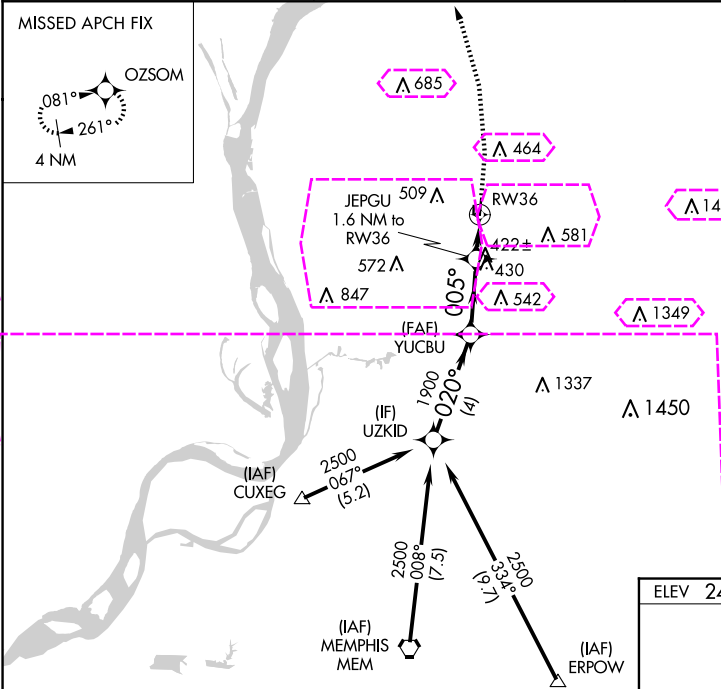
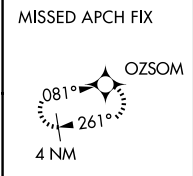
RNAV (GPS) RWY 36
CHARLES W BAKER (2M8)

RNP APCH - GPS.

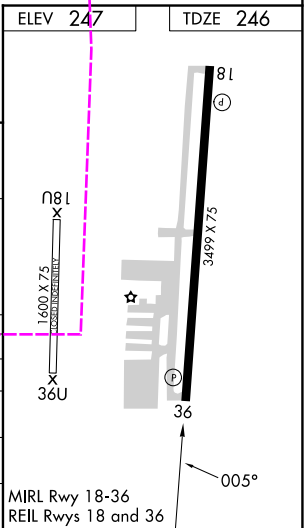
⚠ Baro-VNAV and VDP NA when using Millington/Memphis altimeter setting. For uncompensated Baro-VNAV systems, LNAV/VNAV NA below -15°C or above 54°C. Rwy 36 helicopter visibility reduction below $\frac{3}{4}$ SM NA. Circling Rwy 18 NA at night. When local altimeter setting not received, use Millington/Memphis altimeter setting: increase LPV DA to 643 feet and all visibilities $\frac{1}{2}$ SM; increase LNAV/VNAV DA to 707 feet and all visibilities $\frac{1}{2}$ SM; increase all MDAs 40 feet and LNAV visibility Cat C $\frac{1}{2}$ SM, and Circling visibility Cat C $\frac{1}{2}$ SM.

MISSED APPROACH: Climb to 900 then climbing left turn to 3000 direct OZSOM and hold, continue climb-in-hold to 3000.

AWOS-3PT 119.575	MEMPHIS APP CON 125.8 338.3	UNICOM 122.8 (CTAF)
----------------------------	---------------------------------------	-------------------------------



CATEGORY	A	B	C	D
LPV DA	619-1	373 (400-1)		NA
LNAV/VNAV DA	683-1 $\frac{1}{4}$	437 (500-1 $\frac{1}{4}$)		NA
LNAV MDA	680-1	434 (500-1)	680-1 $\frac{1}{4}$ 434 (500-1 $\frac{1}{4}$)	NA
CIRCLING	760-1 513 (600-1)	860-1 613 (700-1)	900-1 $\frac{3}{4}$ 653 (700-1 $\frac{3}{4}$)	NA



MILLINGTON, TENNESSEE

Orig-C 16MAY24

35°17'N-89°56'W

CHARLES W BAKER (2M8)

RNAV (GPS) RWY 36

MILLINGTON, TENNESSEE

AL-9016 (FAA)

25219

WAAS CH 93924 W36A	APP CRS 005°	Rwy Ldg 3499 TDZE 246 Apt Elev 247
--	------------------------	---

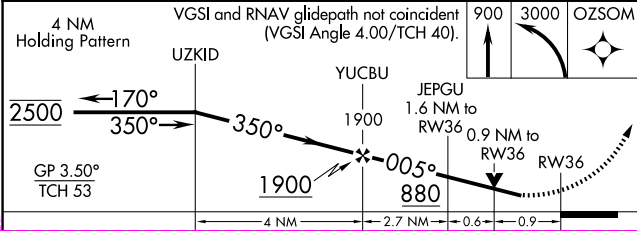
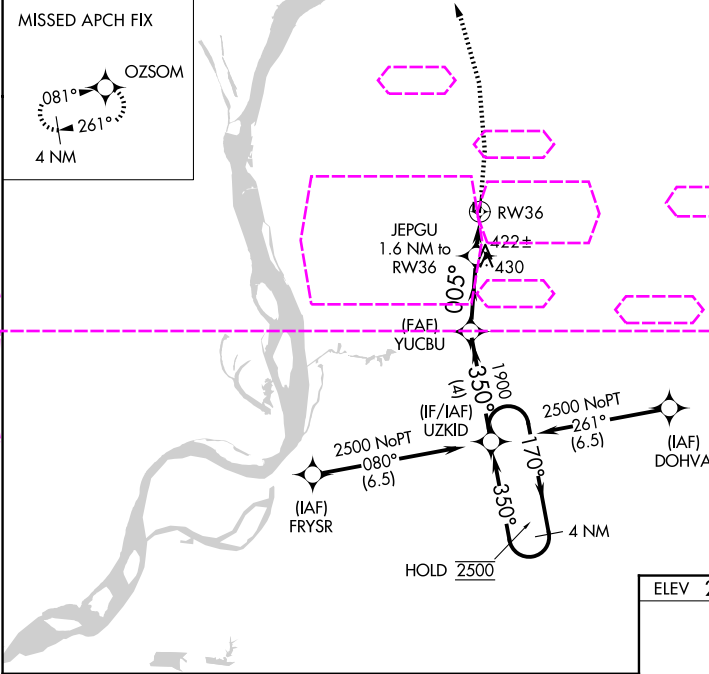
RNAV (GPS) RWY 36
CHARLES W BAKER (2M8)

RNP APCH - GPS.

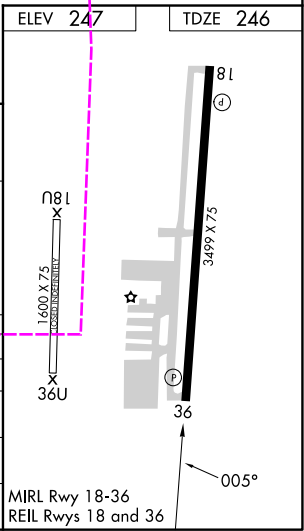
⚠ Baro-VNAV and VDP NA when using NQA altimeter setting. For uncompensated Baro-VNAV systems, LNAV/VNAV NA below -15°C or above 54°C. Rwy 36 helicopter visibility reduction below ¾ SM NA. Circling Rwy 18 NA at night. When local altimeter setting not received, use NQA altimeter setting: increase LPV DA to 643 feet and all visibilities ½ SM; increase LNAV/VNAV DA to 707 feet and all visibilities ½ SM; increase all MDAs 40 feet and LNAV visibility Cat C ½ SM, and Circling visibility Cat C ¼ SM.

MISSED APPROACH: Climb to 900 then climbing left turn to 3000 direct OZSOM and hold, continue climb-in-hold to 3000.

AWOS-3PT 119.575	MEMPHIS APP CON 125.8 338.3	UNICOM 122.8 (CTAF)
----------------------------	---------------------------------------	-------------------------------



CATEGORY	A	B	C	D
LPV DA	619-1	373 (400-1)		NA
LNAV/VNAV DA	683-1¼	437 (500-1¼)		NA
LNAV MDA	680-1	434 (500-1)	680-1¼ 434 (500-1¼)	NA
CIRCLING	760-1 513 (600-1)	860-1 613 (700-1)	900-1¼ 653 (700-1¼)	NA



MILLINGTON, TENNESSEE

Amdt 1 07AUG25

35°17'N-89°56'W

CHARLES W BAKER (2M8)

RNAV (GPS) RWY 36