

LAUREL, DELAWARE

AL-6983 (FAA)

24193

APP CRS	Rwy Idg	N/A
328°	TDZE	N/A
	Apt Elev	30

# RNAV (GPS)-A

LAUREL (N06)

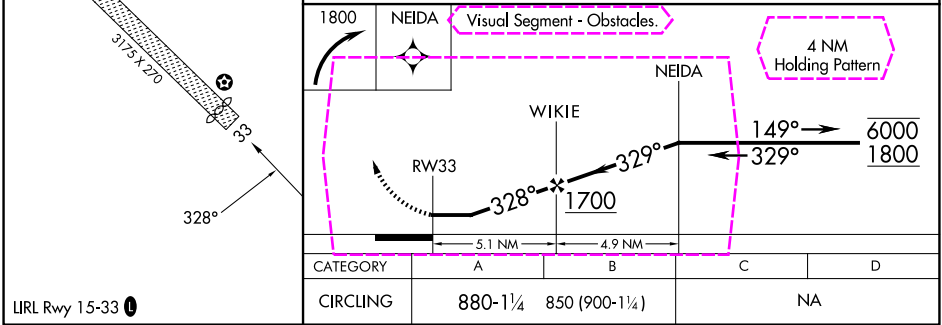
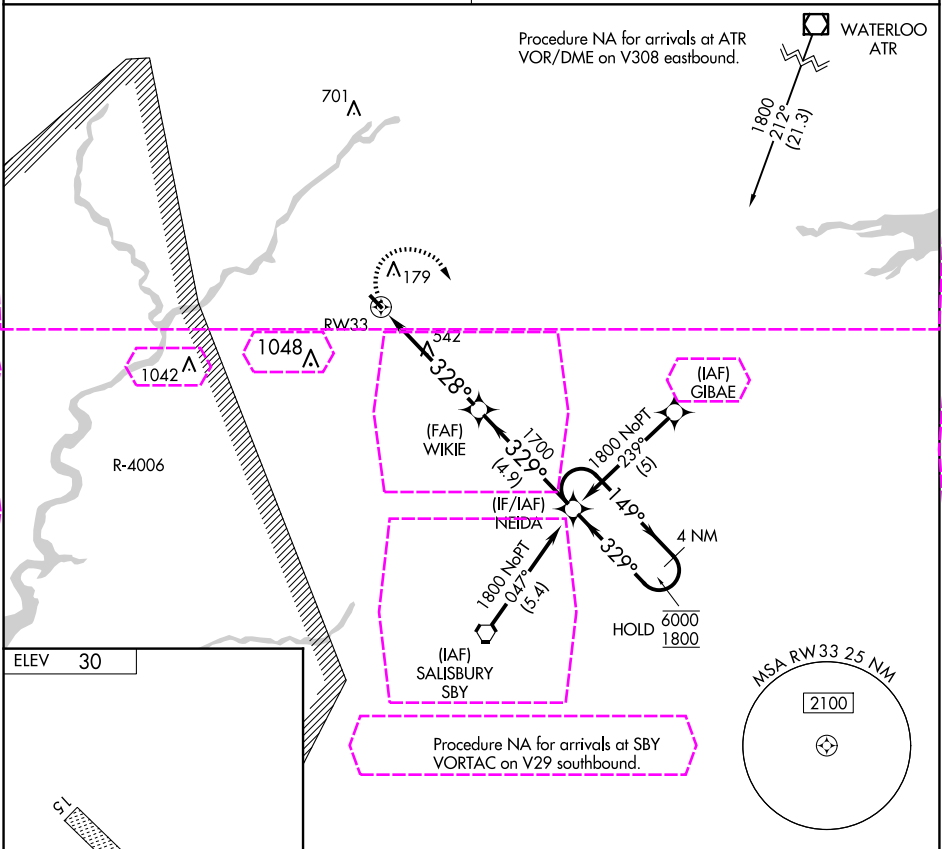
RNP APCH.

▼ Procedure NA at night. Use Salisbury altimeter setting; when not received, use Georgetown altimeter setting.

▲ NA

MISSED APPROACH: Climbing right turn to 1800 direct NEIDA and hold.

PATUXENT APP CON* 127.95 314.0	UNICOM 122.8 (CTAF) 0
-----------------------------------	--------------------------



LAUREL, DELAWARE

Orig-A 28FEB19

38°33'N- 75°36'W

LAUREL (N06)

# RNAV (GPS)-A

NE-3, 10 JUL 2025 to 07 AUG 2025

NE-3, 10 JUL 2025 to 07 AUG 2025

LAUREL, DELAWARE

AL-6983 (FAA)

25219

APP CRS	Rwy Ldg	N/A
328°	TDZE	N/A
	Apt Elev	30

# RNAV (GPS)-A

LAUREL (N06)

RNP APCH - GPS.		MISSED APPROACH: Climbing right turn to 1800 direct NEIDA and hold.
NA	Procedure NA at night. Use SBY altimeter setting; when not received, use GED altimeter setting and increase all MDAs 20 feet.	

SBY ASOS 118.325	PATUXENT APP CON ★ 127.95 314.0	UNICOM 122.8 (CTAF) 0
---------------------	------------------------------------	--------------------------

