

HUGO, OKLAHOMA

AL-6979 (FAA)

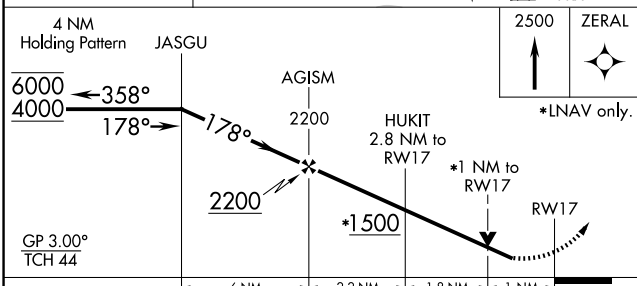
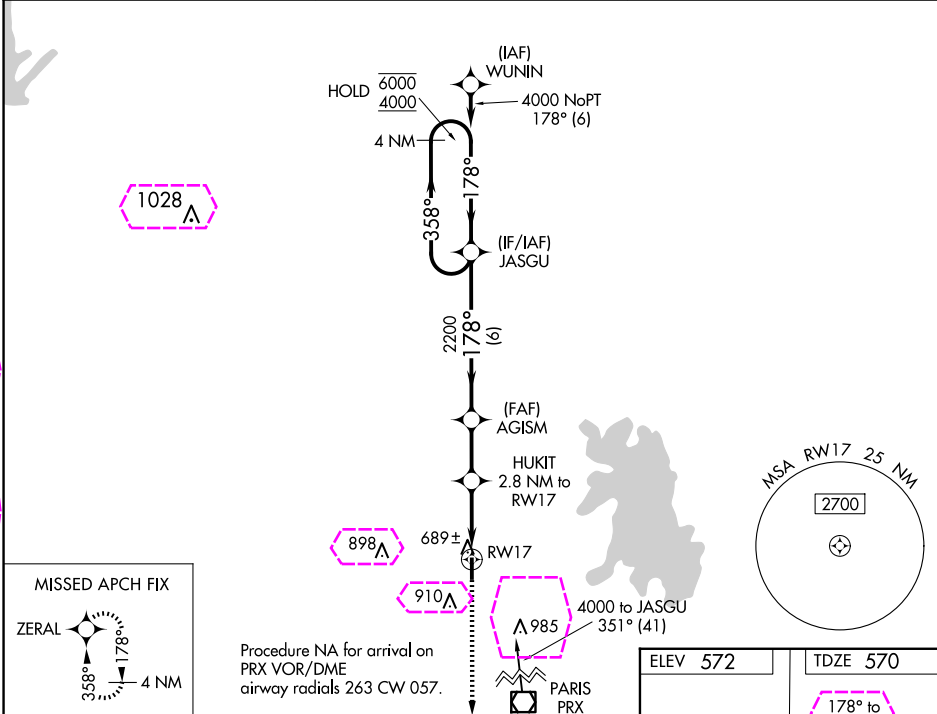
19339

WAAS CH 50437 W17A	APP CRS 178°	Rwy Idg TDZE Apt Elev	4007 570 572
--	------------------------	-----------------------------	---

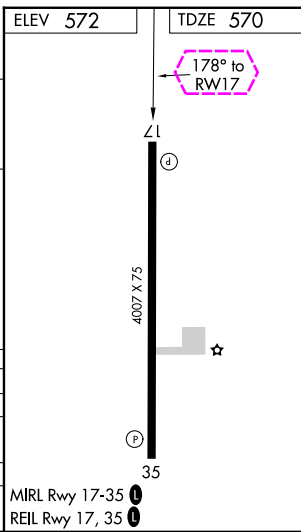
RNAV (GPS) RWY 17
STAN STAMPER MUNI (HHW)

RNP APCH.	<p>▼ Circling Rwy 35 NA at night. Rwy 17 helicopter visibility reduction below ¾ SM NA. ▲ For uncompensated Baro-VNAV systems, LNAV/VNAV NA below -16°C or above 54°C.</p>	MISSED APPROACH: Climb to 2500 direct ZERAL and hold.
-----------	--	---

AWOS-3 119.025	FORT WORTH CENTER 127.6 307.2	UNICOM 122.8 (CTAF) 0
--------------------------	---	---------------------------------



CATEGORY	A	B	C	D
LPV DA	820-1	250 (300-1)		
LNAV/VNAV DA	870-1	300 (300-1)		
LNAV MDA	940-1	370 (400-1)		
CIRCLING	1220-1	648 (700-1)	1340-2¼ 768 (800-2¼)	1340-2½ 768 (800-2½)



HUGO, OKLAHOMA

AL-6979 (FAA)

25219

WAAS CH 50437 W17A	APP CRS 178°	Rwy Ldg TDZE 570 Apt Elev 572
--	------------------------	---

RNAV (GPS) RWY 17

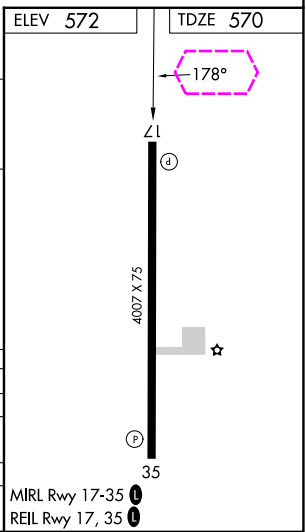
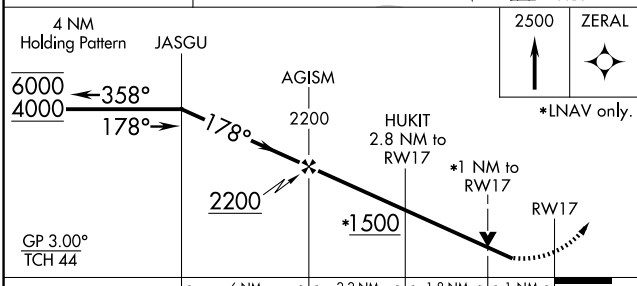
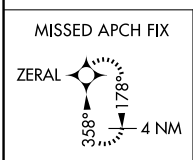
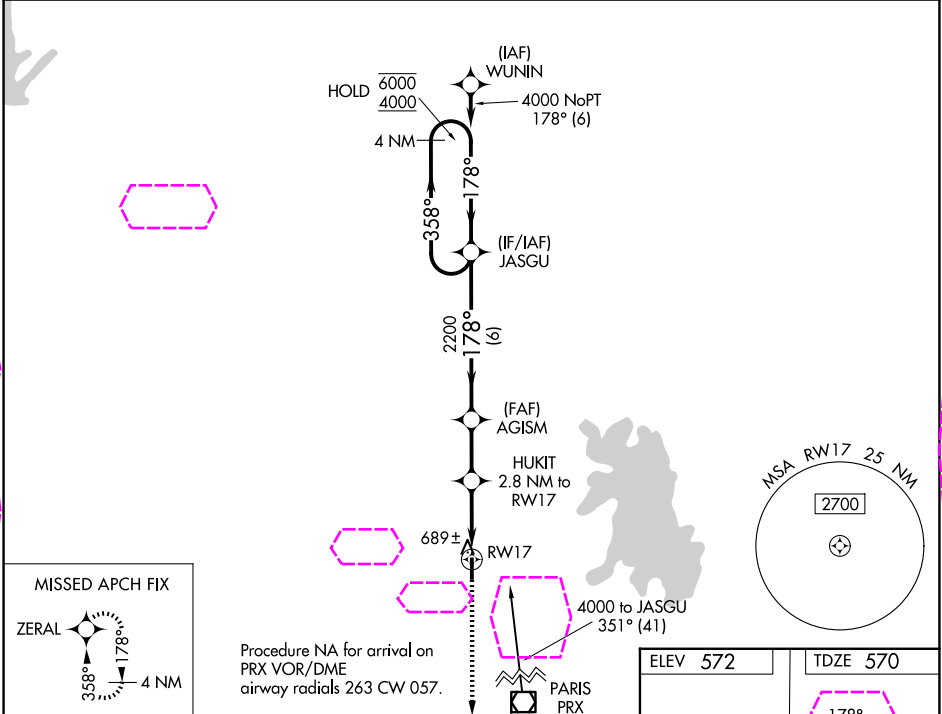
STAN STAMPER MUNI (HHW)

RNP APCH.

⚠ Circling Rwy 35 NA at night. Rwy 17 helicopter visibility reduction below 3/4 SM NA.
⚠ For uncompensated Baro-VNAV systems, LNAV/VNAV NA below -16°C or above 54°C.

MISSED APPROACH: Climb to 2500 direct ZERL and hold.

AWOS-3 119.025	FORT WORTH CENTER 124.875 370.95	UNICOM 122.8 (CTAF) 0
--------------------------	--	---------------------------------



CATEGORY	A	B	C	D
LPV DA		820-1	250 (300-1)	
LNAV/VNAV DA		870-1	300 (300-1)	
LNAV MDA		940-1	370 (400-1)	
CIRCLING	1220-1	648 (700-1)	1340-2 1/4 768 (800-2 1/4)	1340-2 1/2 768 (800-2 1/2)

MIRL Rwy 17-35 **0**
REIL Rwy 17, 35 **0**

HUGO, OKLAHOMA
Amdt 1A 05DEC19

34°02'N-95°33'W

STAN STAMPER MUNI (HHW)
RNAV (GPS) RWY 17

SC-1, 07 AUG 2025 to 04 SEP 2025

SC-1, 07 AUG 2025 to 04 SEP 2025