





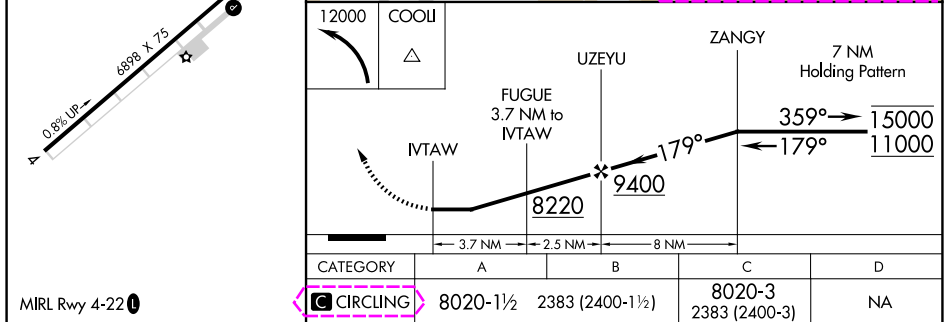
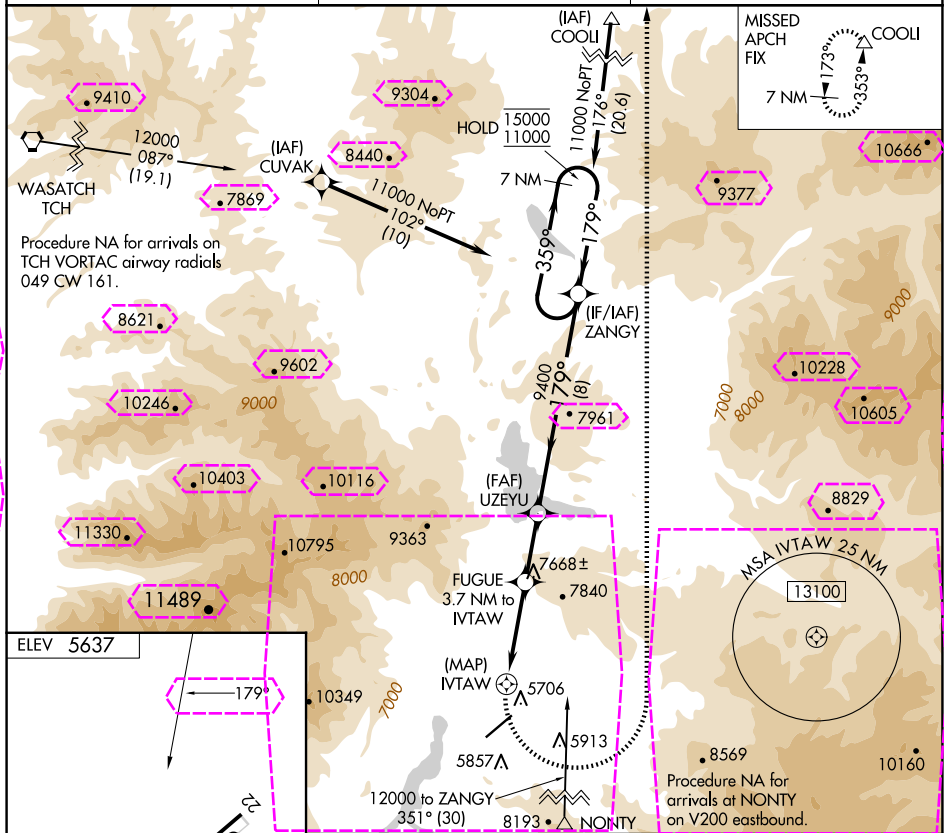
APP CRS 179°	Rwy Ldg TDZE Apt Elev	N/A N/A 5637
------------------------	-----------------------------	---

RNAV (GPS)-A

HEBER VALLEY (HCR)

RNP APCH.	    Circling NA south of Rwy 4-22. Circling Rwy 4 NA at night.	MISSED APPROACH: (Do not exceed 210K until turn completion) Climbing left turn to 12000 direct COOL and hold.
-----------	--	--

AWOS-3PT 124.825	SALT LAKE CITY CENTER 119.95 377.15	UNICOM 122.8 (CTAF) 0
----------------------------	---	---------------------------------



SW-4, 10 JUL 2025 to 07 AUG 2025

SW-4, 10 JUL 2025 to 07 AUG 2025

HEBER, UTAH

AL-6969 (FAA)

25219

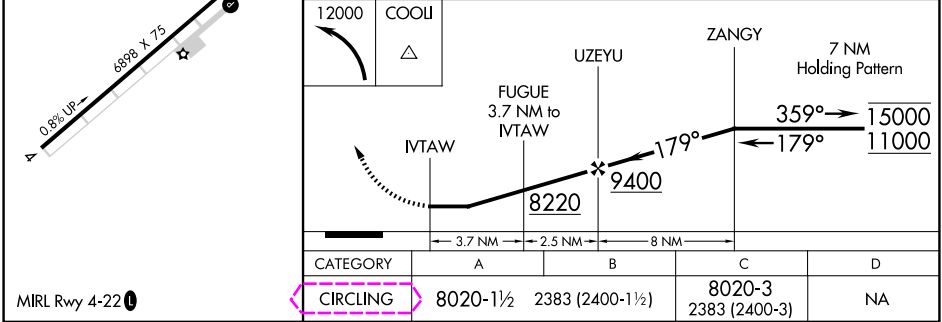
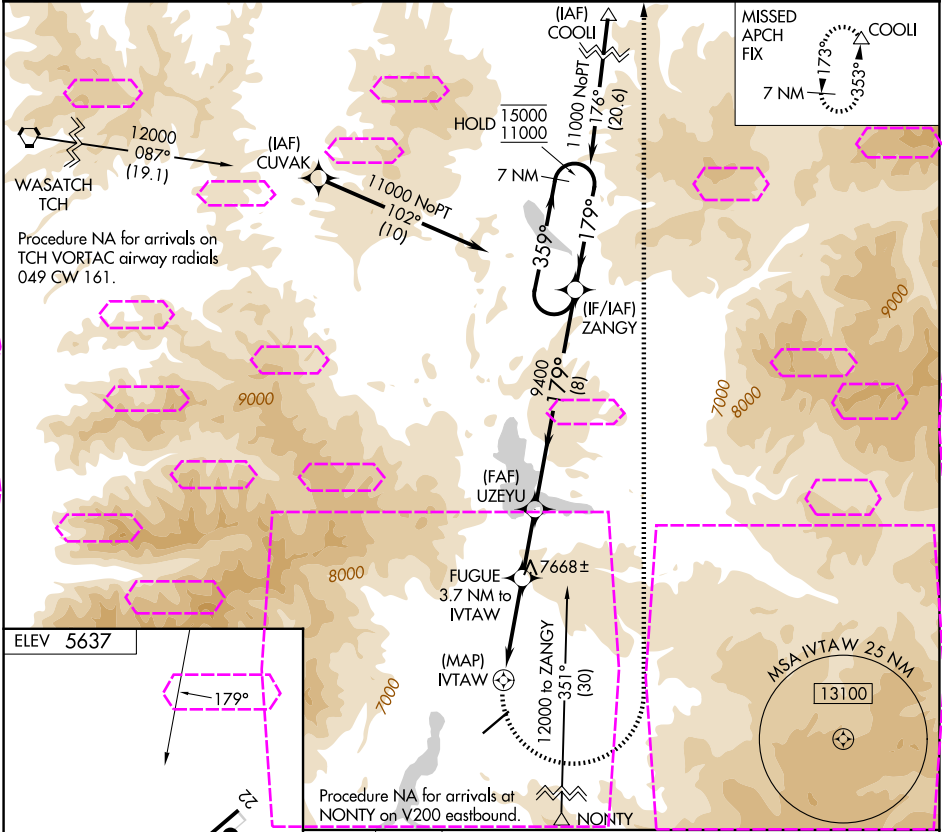
APP CRS 179°	Rwy Ldg TDZE Apt Elev N/A N/A 5637
------------------------	--

RNAV (GPS)-A

HEBER VALLEY (HCR)

RNP APCH. ▼ ▲ ⚠ -1.6°C	Circling NA south of Rwy 4-22. Circling Rwy 4 NA at night.	MISSED APPROACH: (Do not exceed 210K until turn completion) Climbing left turn to 12000 direct COOL and hold.
------------------------------------	---	--

AWOS-3PT 124.825	SALT LAKE CITY CENTER 119.95 377.15	UNICOM 122.8 (CTAF)
----------------------------	---	-------------------------------



HEBER, UTAH

Amtd 3A 15AUG19

40°29'N-111°26'W

HEBER VALLEY (HCR)

RNAV (GPS)-A

SW-4, 07 AUG 2025 to 04 SEP 2025

SW-4, 07 AUG 2025 to 04 SEP 2025