

PAYSON, ARIZONA

AL-6968 (FAA)

24193

APP CRS 352°	Rwy Idg TDZE Apt Elev	N/A N/A 5157
-----------------	-----------------------------	--------------------

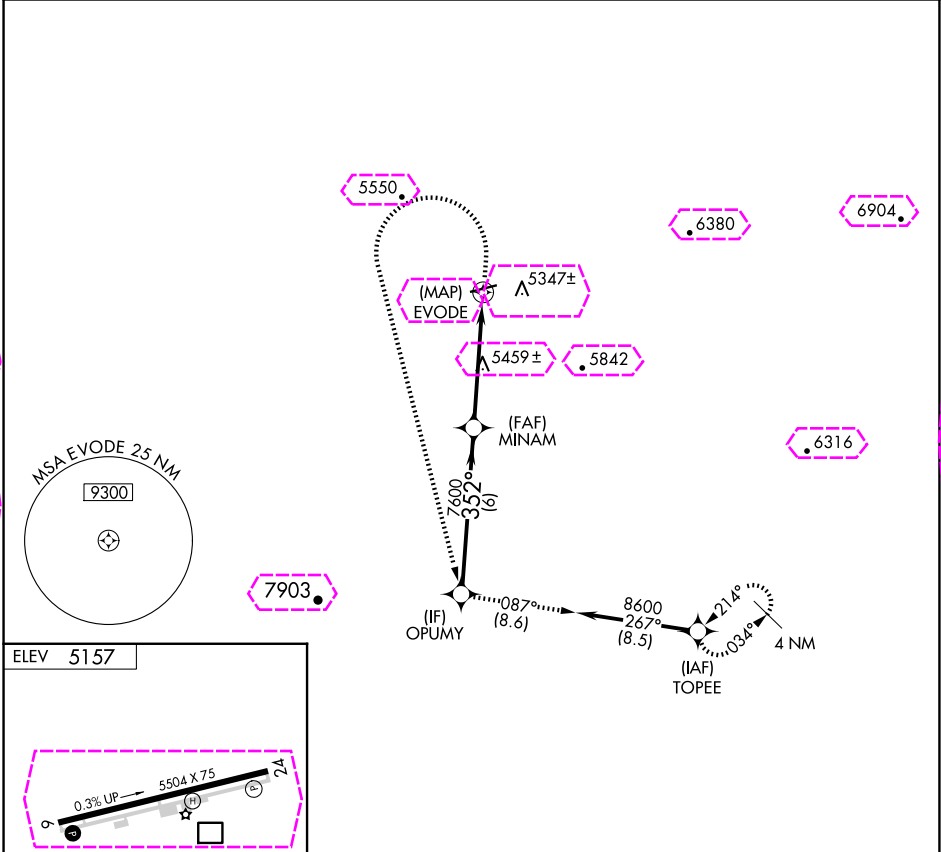
RNAV (GPS)-A

PAYSON (PAN)

NA GPS or RNP- 0.3 required. DME/DME RNP- 0.3 NA.

MISSED APPROACH: Climb to 6700 then climbing left turn to 9000 direct OPUMY WP and via 087° track to TOPEE WP and hold.

AWOS-3PT 119.325	ALBUQUERQUE CENTER 127.675 306.2	UNICOM 122.8 (CTAF) 1
---------------------	-------------------------------------	---------------------------------



Procedure Turn NA	OPUMY	6700	9000	OPUMY	tr 087°	TOPEE
	8600	MINAM				
	352°	7600				
	6 NM		4.9 NM			
CATEGORY	A	B	C	D		
CIRCLING	5700-1 543 (600-1)	5760-1 603 (700-1)	5860-2 703 (800-2)	6060-3 903 (1000-3)		

SW-4, 10 JUL 2025 to 07 AUG 2025

SW-4, 10 JUL 2025 to 07 AUG 2025

PAYSON, ARIZONA

AL-6968 (FAA)

25219

APP CRS 352°	Rwy Ldg TDZE Apt Elev	N/A N/A 5157
-----------------	-----------------------------	--------------------

RNAV (GPS)-A

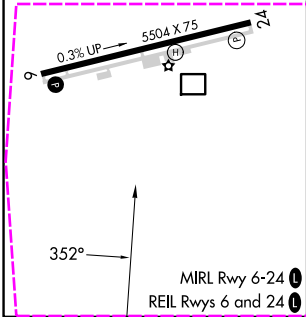
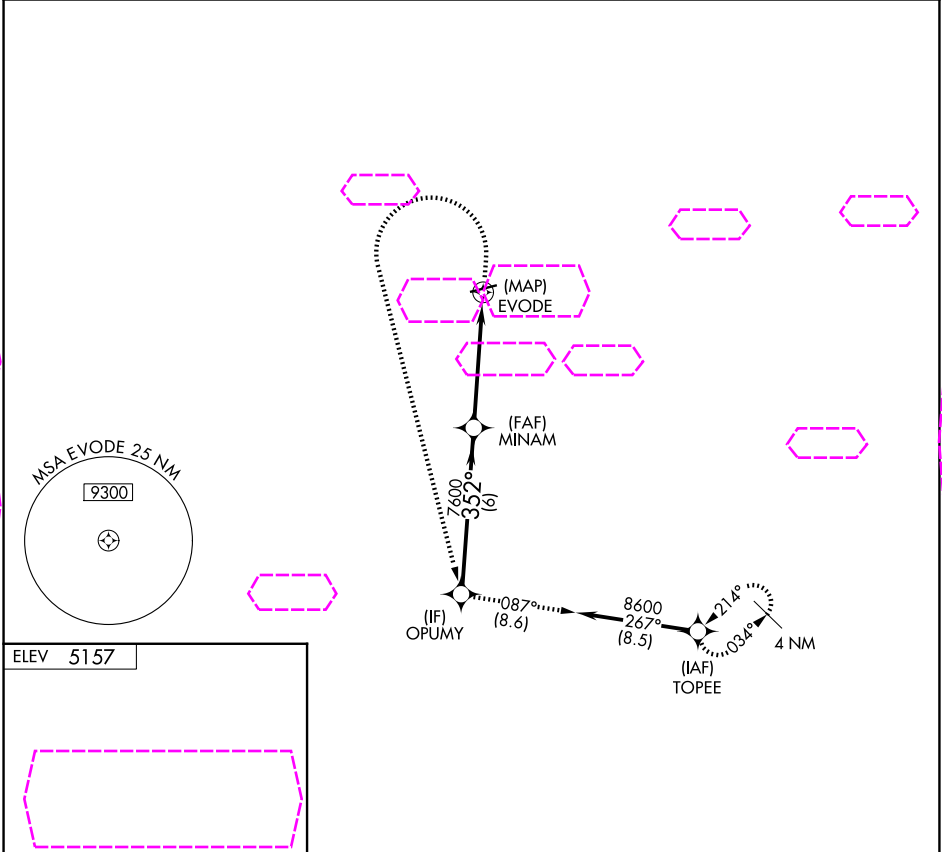
PAYSON (PAN)

NA

GPS or RNP- 0.3 required. DME/DME RNP- 0.3 NA.

MISSED APPROACH: Climb to 6700 then climbing left turn to 9000 direct OPUMY WP and via 087° track to TOPEE WP and hold.

AWOS-3PT 119.325	ALBUQUERQUE CENTER 127.675 306.2	UNICOM 122.8 (CTAF)
---------------------	-------------------------------------	------------------------



	OPUMY	6700	9000	OPUMY	tr	TOPEE
	8600	352°	MINAM		087°	
	Procedure Turn NA	7600				
	6 NM		4.9 NM			
CATEGORY	A	B	C	D		
CIRCLING	5700-1 543 (600-1)	5760-1 603 (700-1)	5860-2 703 (800-2)	6060-3 903 (1000-3)		