

HUNTINGDON, TENNESSEE

AL-6931 (FAA)

25107

WAAS CH 99419 W01A	APP CRS 014°	Rwy Idg 5507 TDZE 495 Apt Elev 497
--	------------------------	---

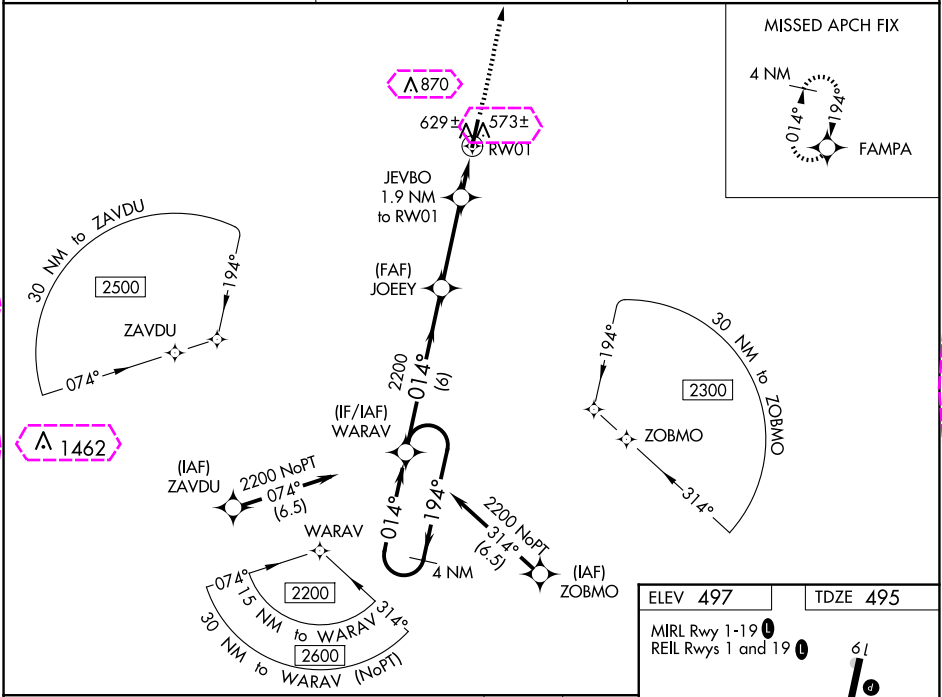
RNAV (GPS) RWY 1

CARROLL COUNTY (HZD)

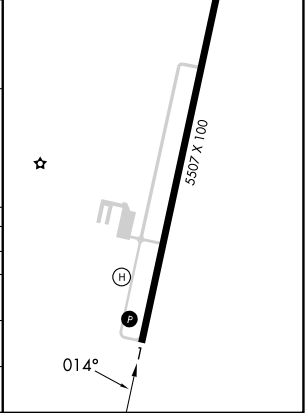
▼ For uncompensated Baro-VNAV systems, LNAV/VNAV NA below -15°C (5°F) or above 54°C (130°F). DME/DME RNP-0.3 NA. When local altimeter setting not received, use Jackson Rgnl altimeter setting and increase all DA 94 feet and all MDA 100 feet; increase LPV all Cats visibility ¼ mile, LNAV/VNAV all Cats visibility ⅓ mile, LNAV Cats C and D visibility ¼ mile, and Circling Cats C and D visibility ½ mile. VDP and Baro-VNAV NA with Jackson Rgnl altimeter setting. Helicopter visibility reduction below ⅓ SM NA.

MISSED APPROACH: Climb to 2200 direct FAMPA and hold.

AWOS-3 133.275	MEMPHIS CENTER 134.65 316.15	UNICOM 122.8 (CTAF) 0
--------------------------	--	---------------------------------



4 NM Holding Pattern				VGSI and RNAV glidepath not coincident (VGSI Angle 3.00/TCH 26).		2200	FAMPA
WARAV				JOEY		2200	
2200 ← 194°				014° →			
GP 3.00°				2200		*1140	*1.1 NM to RW01
TCH 40				6 NM		3.3 NM	0.8 NM
CATEGORY				A	B	C	D
LPV DA				745-7/8 250 (300-7/8)			
LNAV/VNAV DA				810-1 315 (400-1)			
LNAV MDA				880-1 385 (400-1)		880-1 385 (400-1 1/8)	
CIRCLING				980-1 483 (500-1)		1220-2 723 (800-2)	
						1220-2 723 (800-2 1/4)	



HUNTINGDON, TENNESSEE
Amdt 1A 11DEC14

36°05'N-88°28'W

CARROLL COUNTY (HZD)
RNAV (GPS) RWY 1

