

HUNTINGDON, TENNESSEE

AL-6931 (FAA)

25107

WAAS CH 97634 W19A	APP CRS 194°	Rwy Idg 5507 TDZE 497 Apt Elev 497
--	------------------------	---

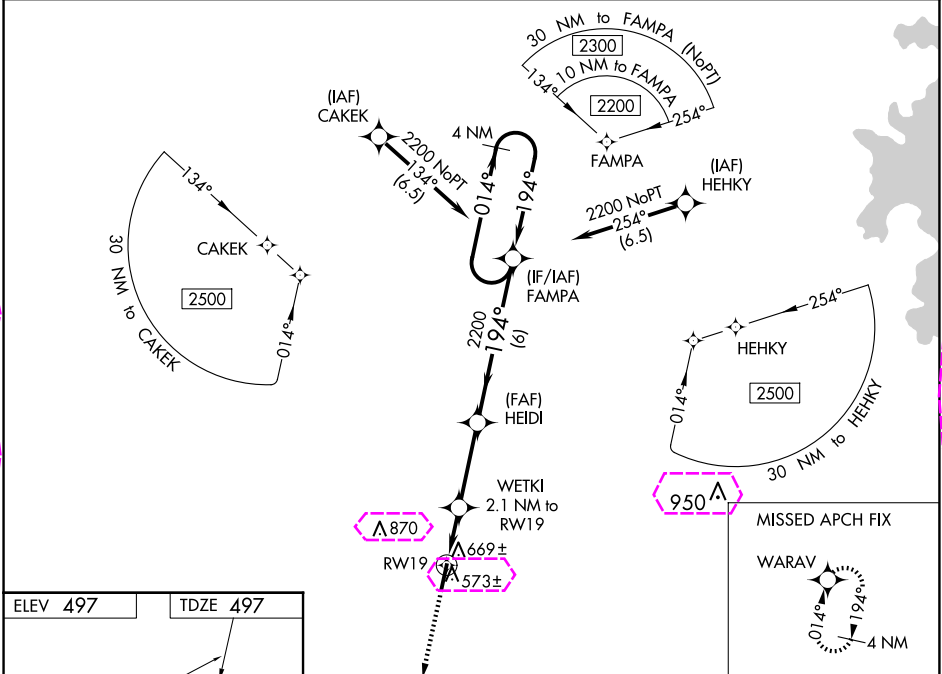
RNAV (GPS) RWY 19

CARROLL COUNTY (HZD)

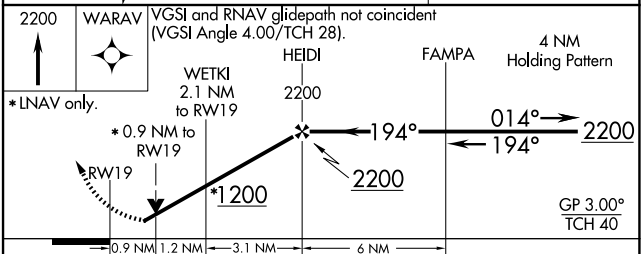
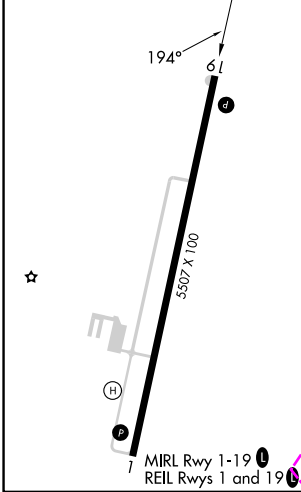
NA For uncompensated Baro-VNAV systems, LNAV/VNAV NA below -15°C (5°F) or above 54°C (130°F). DME/DME RNP-0.3 NA. When local altimeter setting not received, use Jackson Rgnl altimeter setting and increase all DA 94 feet and all MDA 100 feet; increase LPV all Cats and LNAV/VNAV all Cats visibility 3/8 mile, LNAV Cats C and D visibility 1/4 mile, and Circling Cats C and D visibility 1/2 mile. VDP and Baro-VNAV NA with Jackson Rgnl altimeter setting. Helicopter visibility reduction below 3/4 SM NA.

MISSED APPROACH:
Climb to 2200 direct WARAV and hold.

AWOS-3 133.275	MEMPHIS CENTER 134.65 316.15	UNICOM 122.8 (CTAF)
--------------------------	--	-------------------------------



ELEV 497	TDZE 497
-----------------	-----------------



CATEGORY	A	B	C	D
LPV DA	798-1	301 (400-1)		
LNAV/VNAV DA	933-1½	436 (500-1½)		
LNAV MDA	920-1	423 (500-1)	920-1¼	423 (500-1¼)
CIRCLING	980-1	483 (500-1)	1220-2	1220-2¼
			723 (800-2)	723 (800-2¼)

HUNTINGDON, TENNESSEE

Amdt 1A 11DEC14

36°05'N-88°28'W

CARROLL COUNTY (HZD)

RNAV (GPS) RWY 19

WAAS CH 97634 W19A	APP CRS 194°	Rwy Ldg 5507 TDZE 497 Apt Elev 497
--	------------------------	---

RNAV (GPS) RWY 19

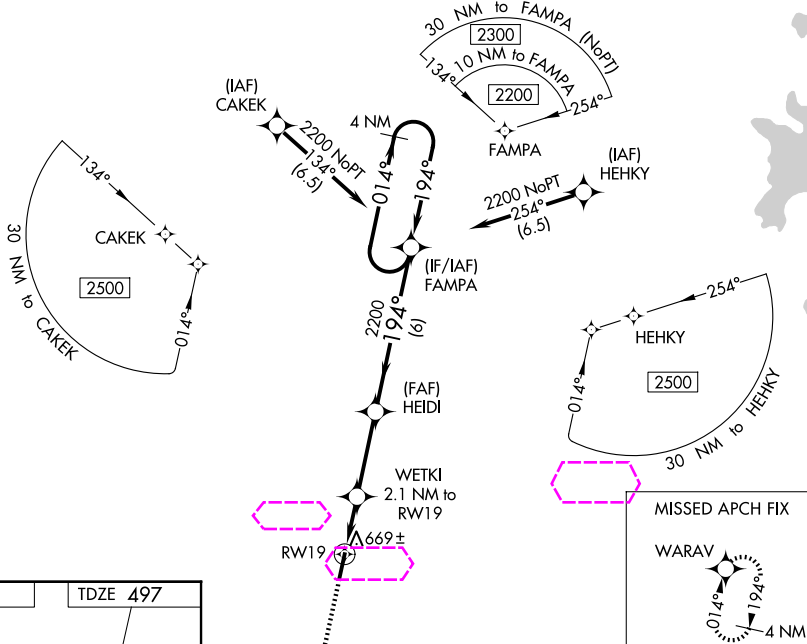
SGT LEE RUSSELL CARROLL COUNTY (HZD)

V For uncompensated Baro-VNAV systems, LNAV/VNAV NA below -15°C (5°F) or above 54°C (130°F). DME/DME RNP-0.3 NA. When local altimeter setting not received, use Jackson Rgnl altimeter setting and increase all DA 94 feet and all MDA 100 feet; increase LPV all Cats and LNAV/VNAV all Cats visibility $\frac{3}{8}$ mile, LNAV Cats C and D visibility $\frac{1}{4}$ mile, and Circling Cats C and D visibility $\frac{1}{2}$ mile. VDP and Baro-VNAV NA with Jackson Rgnl altimeter setting. Helicopter visibility reduction below $\frac{3}{4}$ SM NA.

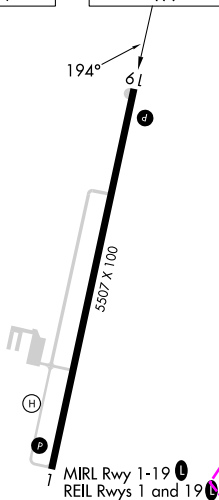
MISSED APPROACH:
Climb to 2200 direct
WARAV and hold.

AWOS-3
133.275

MEMPHIS CENTER
134.65 316.15

UNICOM
122.8 (CTAF) **L**

ELEV 497		TDZE 497
----------	--	----------



HUNTINGDON, TENNESSEE
Amdt 1A 11DEC14

SGT LEE RUSSELL CARROLL COUNTY (HZD)

RNAV (GPS) RWY 19

36°05'N-88°28'W