

ROBSTOWN, TEXAS

AL-6929 (FAA)

23166

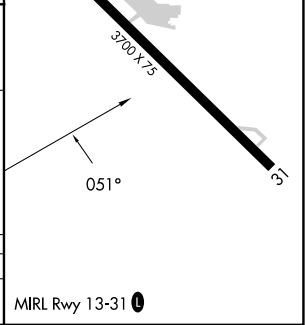
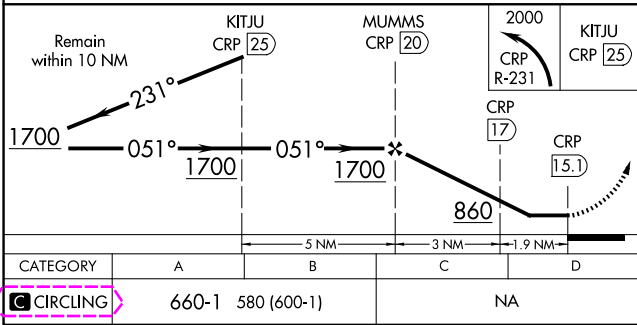
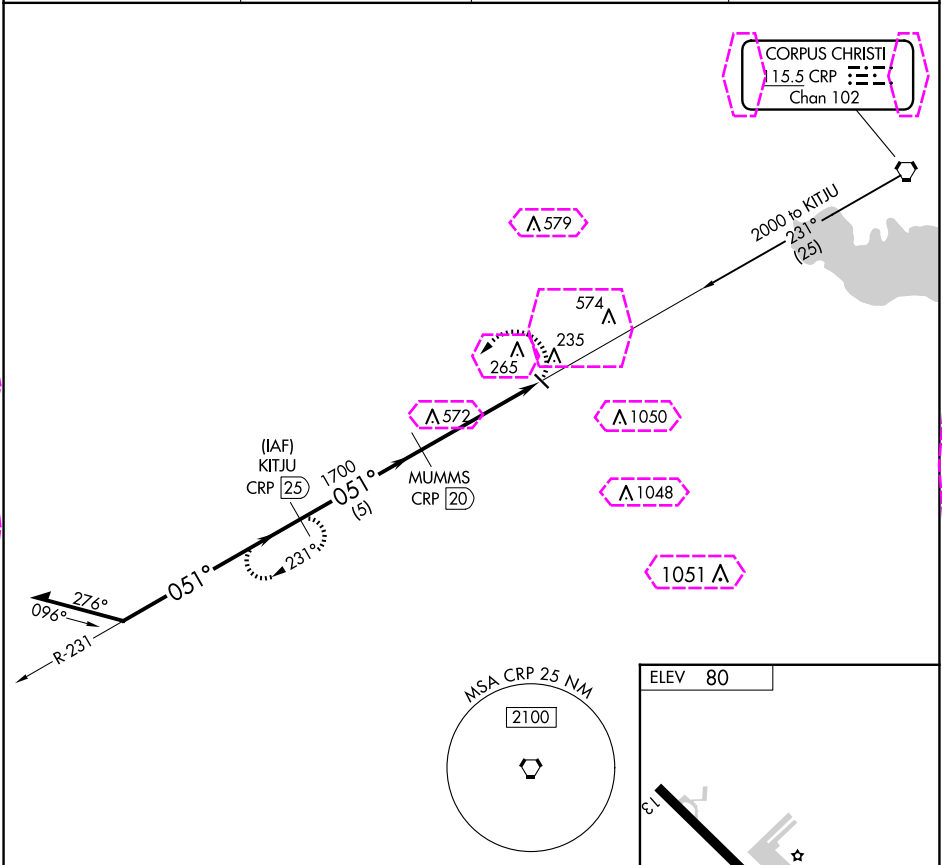
VORTAC CRP <b>115.5</b> Chan <b>102</b>	APP CRS <b>051°</b>	Rwy Idg TDZE Apt Elev <b>N/A</b> <b>N/A</b> <b>80</b>
---	------------------------	--

**VOR/DME-A**  
NUECES COUNTY (RBO)

**NA** When local altimeter setting not received, use Corpus Christi Intl altimeter setting. Circling not authorized northeast of Rwy 13-31.

MISSED APPROACH: Climbing left turn to 2000 via CRP R-231 to KITJU/CRP 25 DME and hold.

AWOS-3 <b>118.175</b>	<b>KINGSVILLE APP CON ★</b> <b>119.9 290.45</b>	CTAF <b>122.9</b>	<b>122.8 0</b>
--------------------------	--	----------------------	----------------



CATEGORY	A	B	C	D
<b>CIRCLING</b>	660-1	580 (600-1)	NA	NA

ROBSTOWN, TEXAS  
Amdt 3B 08OCT20

27°47'N-97°41'W

NUECES COUNTY (RBO)  
**VOR/DME-A**

SC-3, 10 JUL 2025 to 07 AUG 2025

SC-3, 10 JUL 2025 to 07 AUG 2025

ROBSTOWN, TEXAS

AL-6929 (FAA)

25219

VORTAC CRP <b>115.5</b> Chan <b>102</b>	APP CRS <b>051°</b>	Rwy Ldg TDZE Apt Elev <b>N/A</b> <b>N/A</b> <b>80</b>
---	------------------------	--

VOR/DME-A  
NUECES COUNTY (RBO)

**NA**

When local altimeter setting not received, use Corpus Christi Intl altimeter setting. Circling not authorized northeast of Rwy 13-31.

MISSED APPROACH: Climbing left turn to 2000 via CRP R-231 to KITJU/CRP 25 DME and hold.

AWOS-3 <b>118.175</b>	CORPUS APP CON ★ <b>120.9 348.725</b>	CTAF <b>122.9</b>	<b>122.8 0</b>
--------------------------	--	----------------------	----------------

