

RNAV (GPS) RWY 31

ROBSTOWN, TEXAS

AL-6929 (FAA)

25219

WAAS CH <b>50340</b> <b>W31A</b>	APP CRS <b>309°</b>	Rwy Ldg TDZE <b>79</b> Apt Elev <b>80</b>
--	------------------------	---

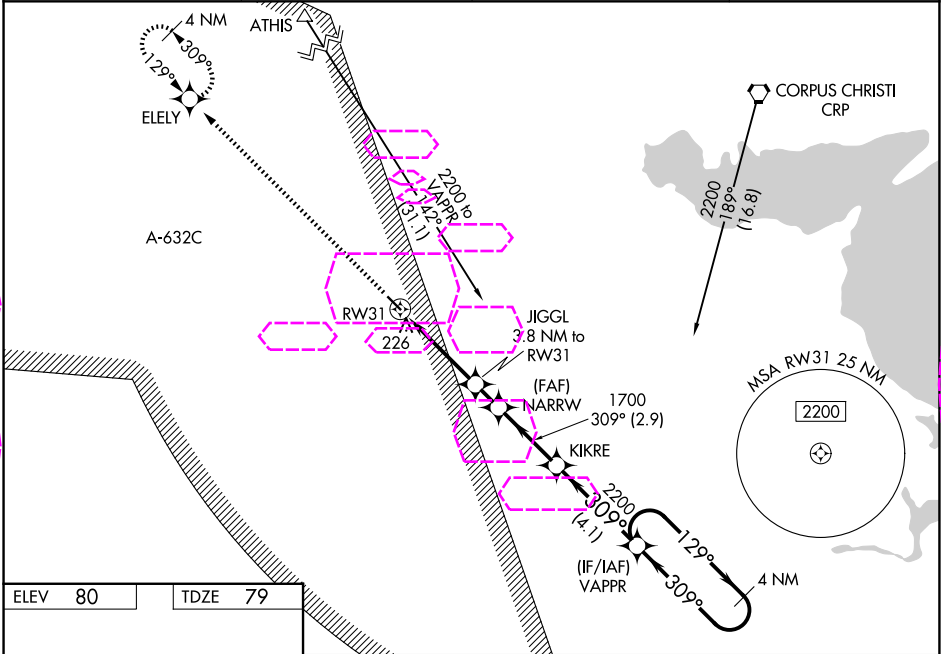
# RNAV (GPS) RWY 31

NUECES COUNTY (RBO)

**⚠** For uncompensated Baro-VNAV systems, LNAV/VNAV NA below -15°C (5°F) or above 54°C (130°F). Circling NA northeast of Rwy 13-31. Baro-VNAV and VDP NA when using Corpus Christi Intl altimeter setting. Rwy 31 helicopter visibility reduction below 3/4 SM NA. DME/DME RNP-0.3 NA. Procedure NA at night. When local altimeter not received, use Corpus Christi Intl altimeter setting and increase LPV DA to 357 feet, LNAV/VNAV DA to 398 feet and all MDA 40 feet, increase LNAV/VNAV all Cats visibility 1/8 SM.

MISSED APPROACH: Climb to 2000 direct ELEY and hold.

AWOS-3 <b>118.175</b>	CORPUS APP CON ★ <b>120.9 348.725</b>	CTAF <b>122.9</b>	<b>122.8 0</b>
--------------------------	--	----------------------	----------------



ELEV 80	TDZE 79	2000 ELEY			
		*LNAV only.			
		*1.1 NM to RW31			
		RW31			
		1.1 NM			
		2.7 NM			
		1.2 NM			
		2.9 NM			
		4.1 NM			
		4 NM Holding Pattern			
		GP 3.00° TCH 40			
		CATEGORY			
		A			
		B			
		C			
		D			
		LPV DA			
		329-1 250 (300-1)			
		NA			
		LNAV/VNAV DA			
		370-1 291 (300-1)			
		NA			
		LNAV MDA			
		480-1 401 (400-1)			
		NA			
		CIRCLING			
		540-1 460 (500-1)			
		NA			

ROBSTOWN, TEXAS

Orig 22JUN17

27°47'N-97°41'W

NUECES COUNTY (RBO)

# RNAV (GPS) RWY 31