

RNAV (GPS) RWY 13

WAAS CH <b>97430</b> <b>W13A</b>	APP CRS <b>129°</b>	Rwy Ldg <b>3700</b> TDZE <b>80</b> Apt Elev <b>80</b>
--	------------------------	---

RNAV (GPS) RWY 13

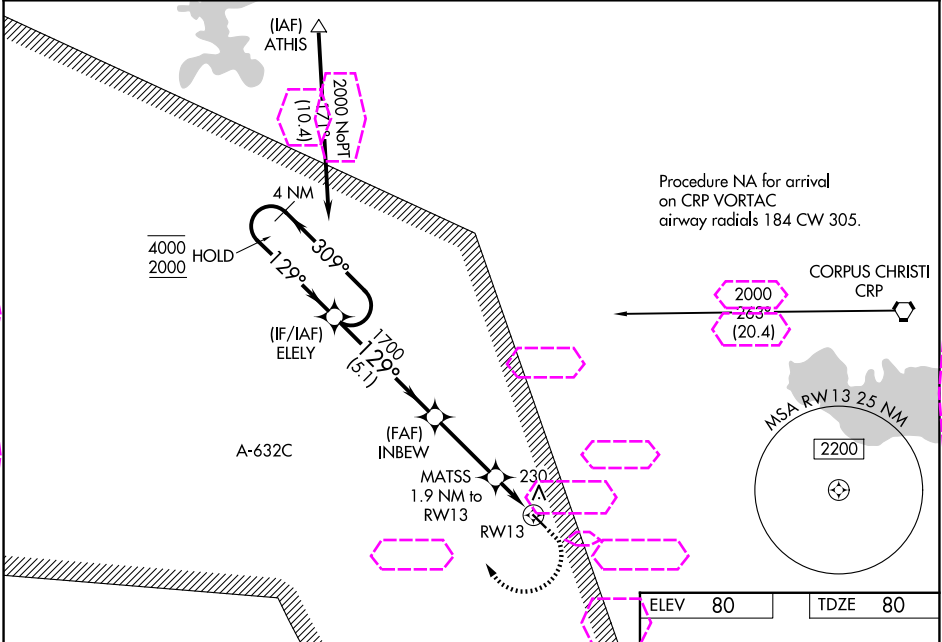
NUECES COUNTY (RBO)

RNP APCH.

⚠ Circling NA northeast of Rwy 13-31. Procedure NA at night. Baro-VNAV and VDP NA when using Corpus Christi Intl altimeter setting. For uncompensated Baro-VNAV systems, LNAV/VNAV NA below -15°C or above 54°C. When local altimeter setting not received, use Corpus Christi Intl altimeter setting and increase LPV DA to 358 feet, LNAV/VNAV DA to 400 feet and all MDA 40 feet.

MISSED APPROACH: Climb to 540 then climbing right turn to 2000 direct ELEY and hold.

AWOS-3 <b>118.175</b>	CORPUS APP CON ★ <b>120.9 348.725</b>	CTAF <b>122.9</b>	<b>122.8 0</b>
--------------------------	--	----------------------	----------------



4 NM Holding Pattern

ELEY

INBEW

MATSS 1.9 NM to RW13

\*LNAV only.

129°

3700 X 75

CATEGORY	A	B	C	D
LPV DA	330-1	250 (300-1)		NA
LNAV/VNAV DA	372-1	292 (300-1)		NA
LNAV MDA	480-1	400 (400-1)		NA
CIRCLING	540-1 460 (500-1)	640-1 560 (600-1)		NA

MIRL Rwy 13-31 0