

GEORGE WEST, TEXAS

AL-6928 (FAA)

21336

APP CRS	Rwy Idg	3799
130°	TDZE	129
	Apt Elev	129

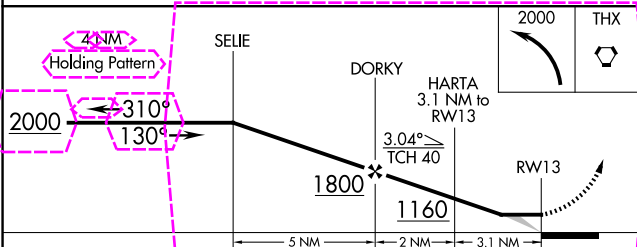
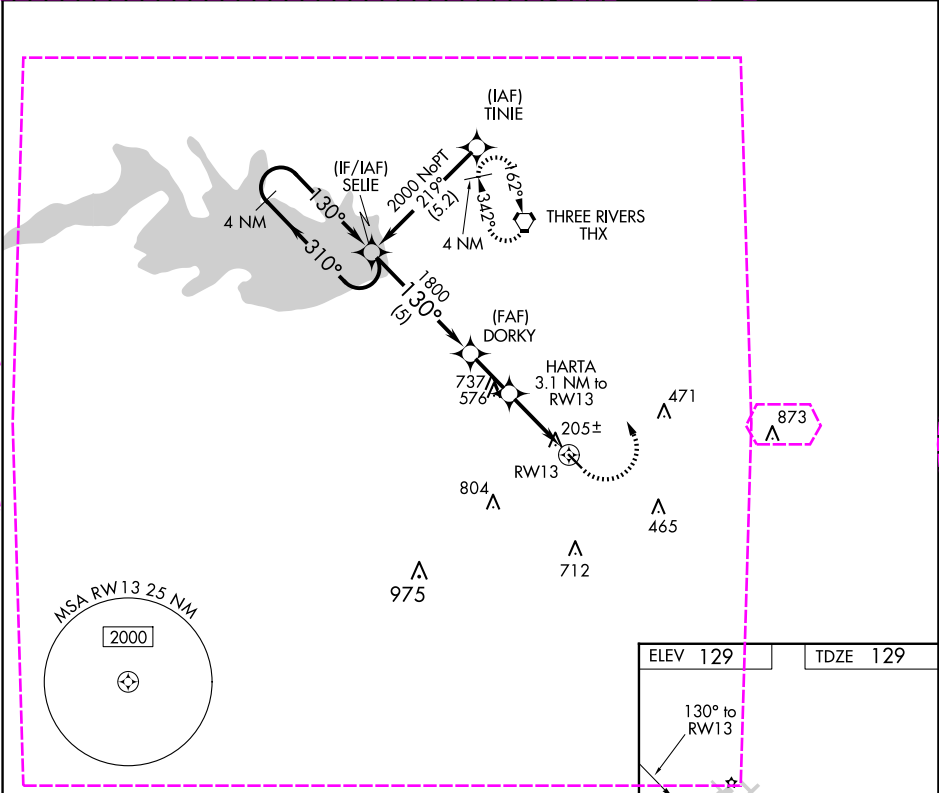
RNAV (GPS) RWY 13

LIVE OAK COUNTY (8T6)

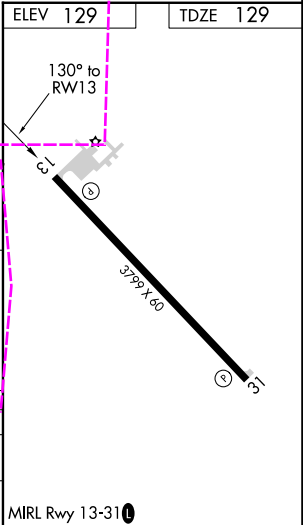
NA Use Alice Intl altimeter setting. DME/DME RNP-0.3 NA.
Procedure NA at night. Visibility reduction by helicopters NA.

MISSED APPROACH: Climbing left turn to 2000 direct THX VORTAC and hold.

AWOS-3PT 119.05	ALI ASOS 119.225	HOUSTON CENTER 134.6 322.5	CTAF 122.9	122.7 0
--------------------	---------------------	-------------------------------	---------------	---------



CATEGORY	A	B	C	D
RNAV MDA	700-1 571 (600-1)	700-1 1/2 571 (600-1 1/2)	700-2 571 (600-2)	NA
CIRCLING	760-1 631 (700-1)	860-1 731 (800-1)	860-2 731 (800-2)	NA



GEORGE WEST, TEXAS
Orig-B 20MAY21

28°22'N-98°07'W

LIVE OAK COUNTY (8T6)
RNAV (GPS) RWY 13

SC-3, 10 JUL 2025 to 07 AUG 2025

SC-3, 10 JUL 2025 to 07 AUG 2025

GEORGE WEST, TEXAS

AL-6928 (FAA)

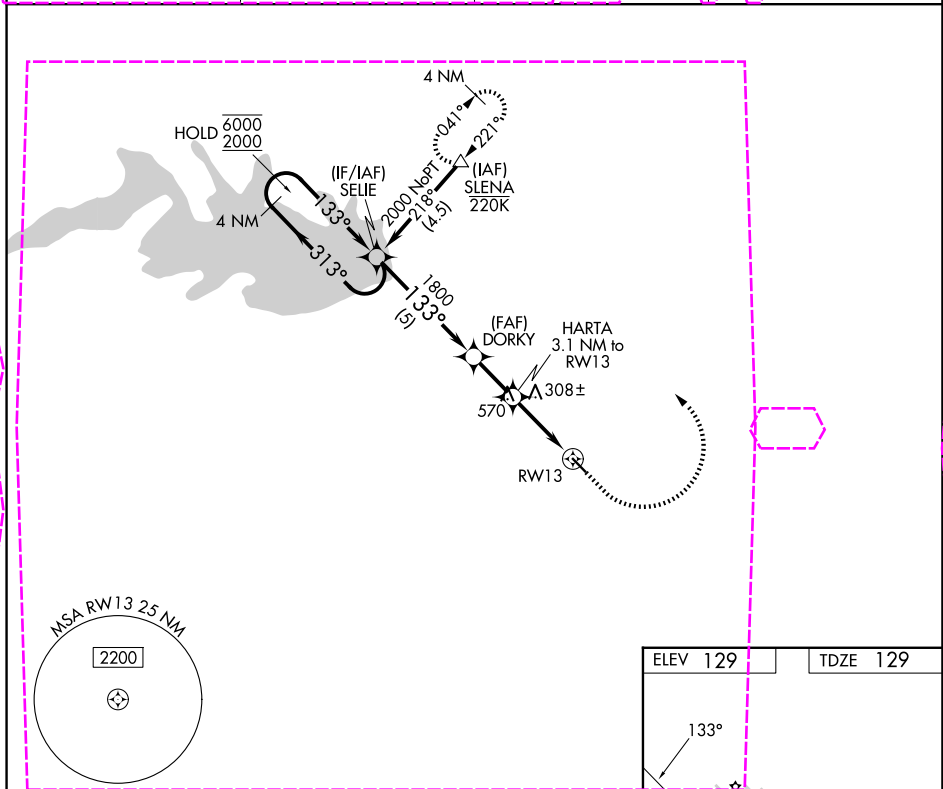
25219

APP CRS	Rwy Ldg	3799
133°	TDZE	129
	Apt Elev	129

RNAV (GPS) RWY 13

LIVE OAK COUNTY (8T6)

RNP APCH - GPS.		MISSED APPROACH: Climb to 700 then climbing left turn to 2000 direct SLENA and hold.
▼ ▲	Rwy 13 helicopter visibility reduction below ¾ SM NA.	
AWOS-3PT 119.05	HOUSTON CENTER 134.6 322.5	CTAF 122.9
		122.7 0



Holding Pattern		SELE	DORKY	HARTA 3.1 NM to RWY 13	700	2000	SLENA
6000 2000		313°	133°	3.00° TCH 53	1800	1160	1.2 NM to RWY 13
5 NM		2 NM	1.9 NM	1.2 NM			
CATEGORY	A	B	C	D			
RNAV MDA	560-1	431 (500-1)	560-1¼ 431 (500-1¼)	NA			
CIRCLING	760-1	631 (700-1)	760-1¾ 631 (700-1¾)	NA			

MIRL Rwy 13-31 0

GEORGE WEST, TEXAS

Amdt 1 07AUG25

28°22'N-98°07'W

LIVE OAK COUNTY (8T6)

RNAV (GPS) RWY 13

SC-3, 07 AUG 2025 to 04 SEP 2025

SC-3, 07 AUG 2025 to 04 SEP 2025