

LOCKHART, TEXAS

AL-6919 (FAA)

23362

WAAS CH 45922 W18A	APP CRS 175°	Rwy Idg TDZE Apt Elev	4001 532 532
--	------------------------	-----------------------------	---

RNAV (GPS) RWY 18

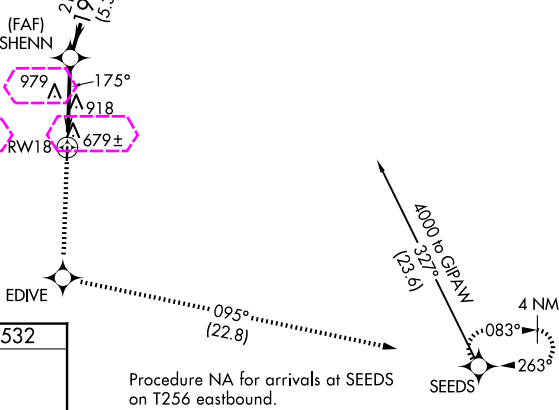
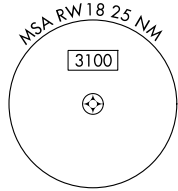
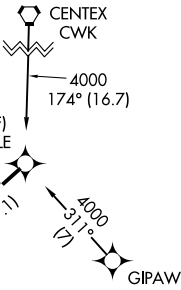
LOCKHART MUNI (50R)

RNP APCH.	Baro-VNAV NA. Use San Marcos altimeter setting, when not received, use Austin-Bergstrom Intl altimeter setting and increase all DA 16 feet, all MDA 20 feet; increase LNAV Cat B visibility ¼ SM.	MISSED APPROACH: Climb to 4000 direct EDIVE and on track 095° to SEEDS and hold.
-----------	---	--

AUSTIN APP CON 120.875 270.25	UNICOM 122.8 (CTAF) 0
---	--

Procedure NA for arrivals on CWK VORTAC
airway radials 088 CW 237.

△ 1615



ELEV 532	TDZE 532
81 175°	
4001 X 75	
36	
MIRL Rwy 18-36 0	

4000	EDIVE	tr 095°	SEEDS	VGSI and RNAV glidepath not coincident (VGSI Angle 3.50/TCH 24).
CATEGORY	A	B	C	D
LPV DA	815-1 283 (300-1)			NA
LNAV/VNAV DA	883-1¼ 351 (400-1¼)			NA
LNAV MDA	1260-1 728 (800-1)		1260-2 728 (800-2)	NA

LOCKHART, TEXAS
Orig-C 28DEC23

29°51'N-97°40'W

RNAV (GPS) RWY 18

SC-3, 10 JUL 2025 to 07 AUG 2025

SC-3, 10 JUL 2025 to 07 AUG 2025

LOCKHART, TEXAS

AL-6919 (FAA)

25219

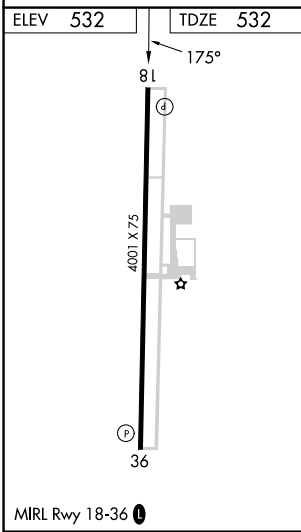
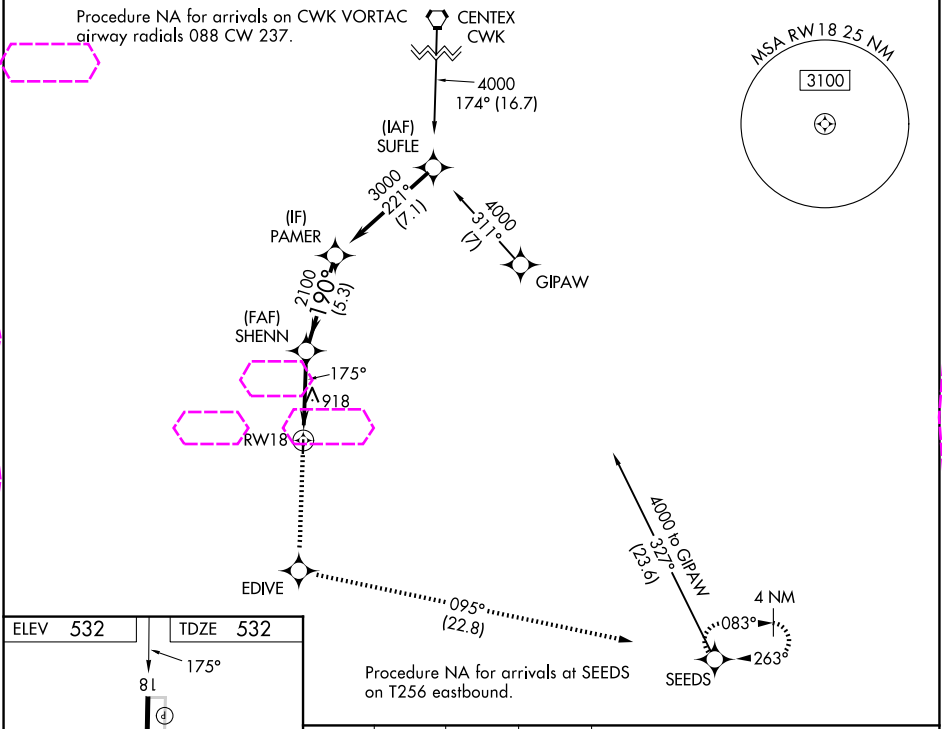
WAAS CH 45922 W18A	APP CRS 175°	Rwy Ldg TDZE Apt Elev	4001 532 532
--	------------------------	-----------------------------	---

RNAV (GPS) RWY 18

LOCKHART MUNI (50R)

RNP APCH.	MISSED APPROACH: Climb to 4000 direct EDIVE and on track 095° to SEEDS and hold.
-----------	--

AUSTIN APP CON 120.875 270.25	UNICOM 122.8 (CTAF) 0
---	---------------------------------



4000	EDIVE	tr 095°	SEEDS	VGSI and RNAV glidepath not coincident (VGSI Angle 3.50/TCH 24).
CATEGORY	A	B	C	D
LPV DA	815-1 283 (300-1)			NA
LNNAV/ VNAV	883-1¼ 351 (400-1¼)			NA
LNNAV MDA	1260-1 728 (800-1)		1260-2 728 (800-2)	NA

LOCKHART, TEXAS
Orig-C 28DEC23

29°51'N-97°40'W

RNAV (GPS) RWY 18

SC-3, 07 AUG 2025 to 04 SEP 2025

SC-3, 07 AUG 2025 to 04 SEP 2025