

FORT WORTH, TEXAS

AL-6918 (FAA)

25163

WAAS CH 99338 W16A	APP CRS 166°	Rwy Ldg 10409 TDZE 721 Apt Elev 723
--	------------------------	--

RNAV (GPS) RWY 16R

PEROT FLD/FORT WORTH ALLIANCE (AFW)

RNP APCH-GPS.

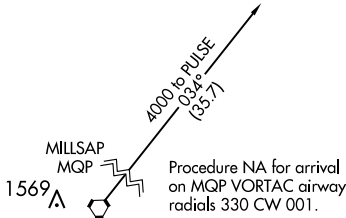
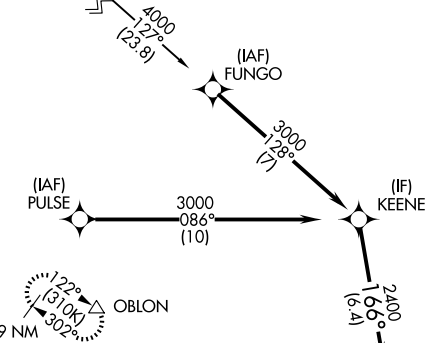
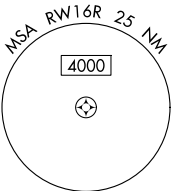
▼
▲ For uncompensated Baro-VNAV systems, LNAV/VNAV NA below -9°C or above 54°C. Circling NA east of Rwy 16L-34R.

MISSED APPROACH: Climb to 1200 then climbing right turn to 3000 direct OBLON and hold.

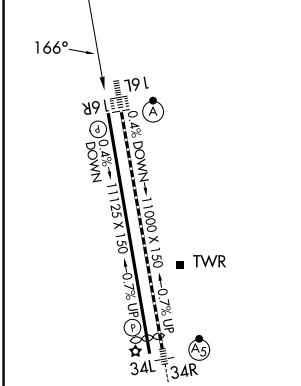
ATIS 126.925	LONE STAR APP CON 118.1 306.95	ALLIANCE TOWER 135.15 257.9	GND CON 132.65 306.2	CLNC DEL 128.725
------------------------	--	---------------------------------------	--------------------------------	----------------------------

Procedure NA for arrival on UKW VORTAC airway radials 065 CW 184.

BOWIE UKW



ELEV 723	D	TDZE 721
-----------------	----------	-----------------



TDZ/CL Rwy 16L and 34R
HIRL Rwy 16L-34R and 16R-34L
REIL Rwy 16R and 34L

VGSI and RNAV glidepath not coincident (VGSI Angle 3.00/TCH 82).				
GP 3.00° TCH 55				
6.4 NM 3 NM 1.1 NM 1 NM				
CATEGORY	A	B	C	D
LPV DA	921-1		200 (200-1)	
LNAV/VNAV DA	1017-1		296 (300-1)	
LNAV MDA	1120-1	399 (400-1)	1120-1½ 399 (400-1½)	
CIRCLING	1200-1 477 (500-1)	1320-1 597 (600-1)	1360-1¾ 637 (700-1¾)	1380-2 657 (700-2)

FORT WORTH, TEXAS
Amdt 1B 26DEC24

32°59'N-97°19'W PEROT FLD/FORT WORTH ALLIANCE (AFW)

RNAV (GPS) RWY 16R

FORT WORTH, TEXAS

AL-6918 (FAA)

25219

WAAS CH 99338 W16A	APP CRS 166°	Rwy Ldg 10410 TDZE 721 Apt Elev 723
--	------------------------	--

RNAV (GPS) RWY 16R

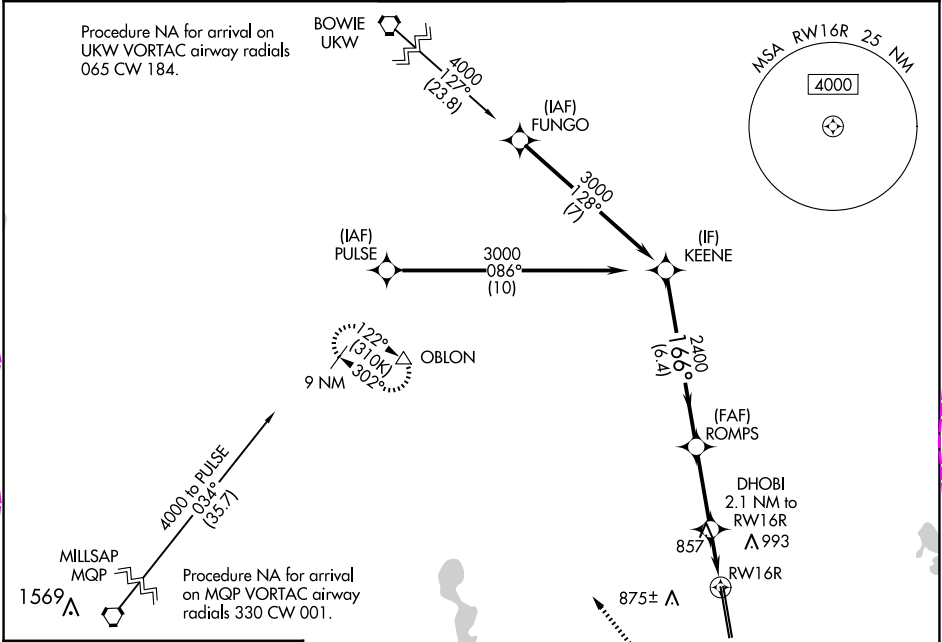
PEROT FLD/FORT WORTH ALLIANCE (AFW)

RNP APCH-GPS.

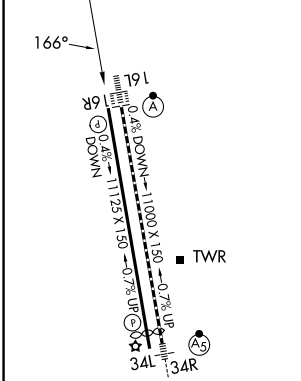
▼
▲ For uncompensated Baro-VNAV systems, LNAV/VNAV NA below -9°C or above 54°C. Circling NA east of Rwy 16L-34R.

MISSED APPROACH: Climb to 1200 then climbing right turn to 3000 direct OBLON and hold.

ATIS 126.925	LONE STAR APP CON 118.1 306.95	ALLIANCE TOWER 135.15 257.9	GND CON 132.65 306.2	CLNC DEL 128.725
------------------------	--	---------------------------------------	--------------------------------	----------------------------



ELEV 723	D	TDZE 721
-----------------	----------	-----------------



TDZ/CL Rwy 16L and 34R
HIRL Rwy 16L-34R and 16R-34L
REIL Rwy 16R and 34L

VGSI and RNAV glidepath not coincident (VGSI Angle 3.00/TCH 82).				
CATEGORY	A	B	C	D
LPV DA	921-1		200 (200-1)	
LNAV/VNAV DA	1017-1		296 (300-1)	
LNAV MDA	1120-1	399 (400-1)	1120-1½ 399 (400-1½)	
CIRCLING	1200-1 477 (500-1)	1320-1 597 (600-1)	1360-1¾ 637 (700-1¾)	1380-2 657 (700-2)

FORT WORTH, TEXAS
Amdt 1B 26DEC24

32°59'N-97°19'W PEROT FLD/FORT WORTH ALLIANCE (AFW)

RNAV (GPS) RWY 16R

SC-2, 07 AUG 2025 to 04 SEP 2025

SC-2, 07 AUG 2025 to 04 SEP 2025