

(JPOOL7, TTT) 24305

AL-6918 (FAA)

PEROT FLD/FORT WORTH ALLIANCE (AFW)
FORT WORTH, TEXAS

JOE POOL SEVEN DEPARTURE

LONE STAR DEP CON
118.1 306.95
ATIS
126.925
CLNC DEL
128.725
GND CON
132.65 306.2
ALLIANCE TOWER
135.15 257.9

RADAR and DME required.

**TOP ALTITUDE:
ASSIGNED BY ATC**

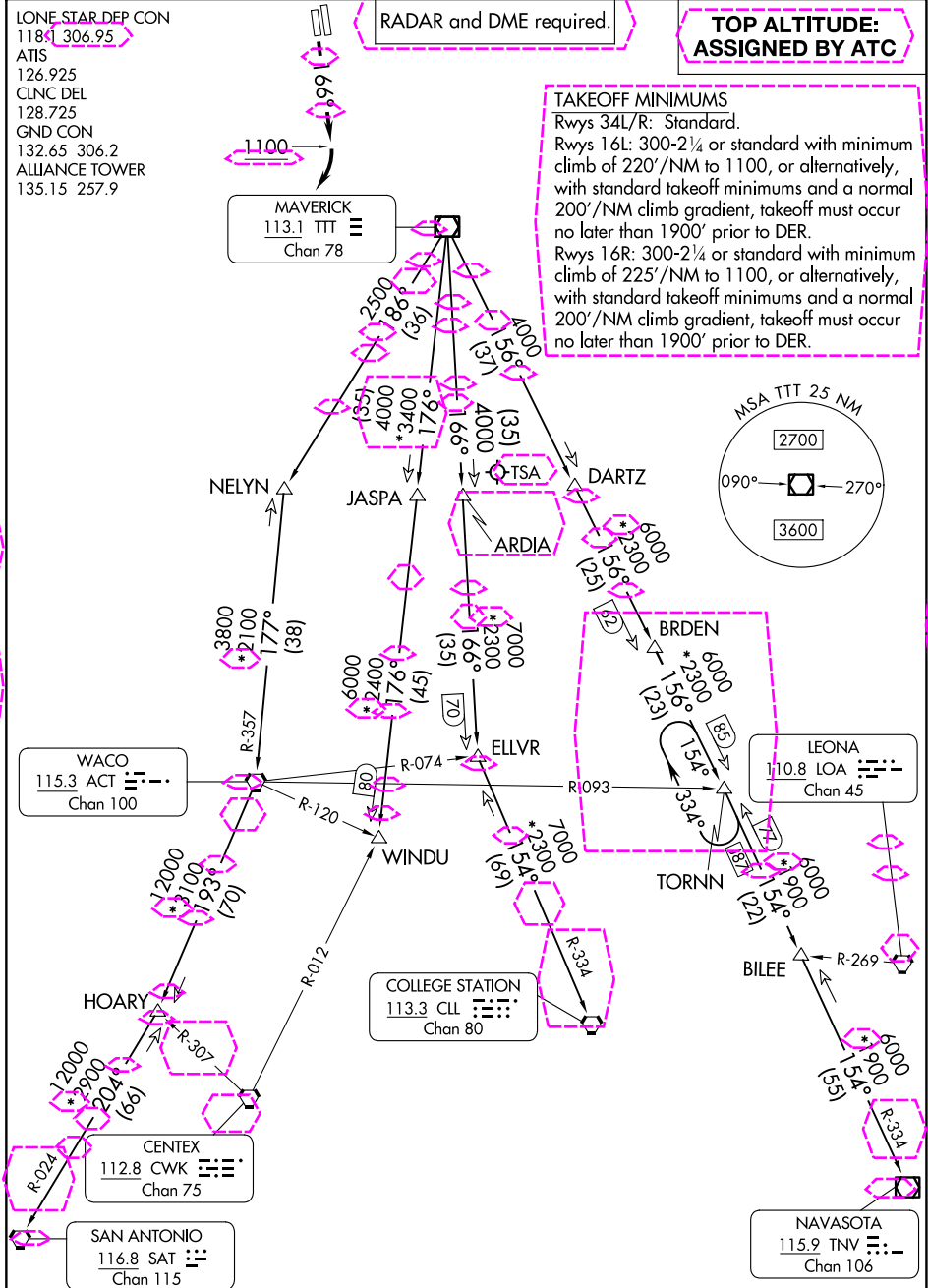
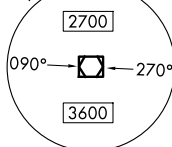
TAKEOFF MINIMUMS

Rwys 34L/R: Standard.

Rwys 16L: 300-2¼ or standard with minimum climb of 220'/NM to 1100, or alternatively, with standard takeoff minimums and a normal 200'/NM climb gradient, takeoff must occur no later than 1900' prior to DER.

Rwys 16R: 300-2¼ or standard with minimum climb of 225'/NM to 1100, or alternatively, with standard takeoff minimums and a normal 200'/NM climb gradient, takeoff must occur no later than 1900' prior to DER.

MSA TTT 25 NM



(CONTINUED ON FOLLOWING PAGE)

NOTE: Chart not to scale.

JOE POOL SEVEN DEPARTURE

(JPOOL7, TTT) 25JAN24

FORT WORTH, TEXAS
PEROT FLD/FORT WORTH ALLIANCE (AFW)

SC-2, 10 JUL 2025 to 07 AUG 2025

SC-2, 10 JUL 2025 to 07 AUG 2025

(JPOOL8, TTT) 25219

AL-6918 (FAA)

PEROT FLD/FORT WORTH ALLIANCE (AFW)
FORT WORTH, TEXAS

JOE POOL EIGHT DEPARTURE

LONE STAR DEP CON
118.1 306.95
ATIS
126.925
CLNC DEL
128.725
GND CON
132.65 306.2
ALLIANCE TOWER
135.15 257.9

RADAR and DME required.

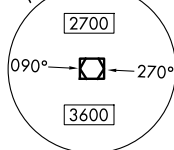
**TOP ALTITUDE:
ASSIGNED BY ATC****TAKEOFF MINIMUMS**

Rwys 34L/R: Standard.

Rwy 16L: 300-2¼ or standard with minimum climb of 220'/NM to 1100, or alternatively, with standard takeoff minimums and a normal 200'/NM climb gradient, takeoff must occur no later than 1900' prior to DER.

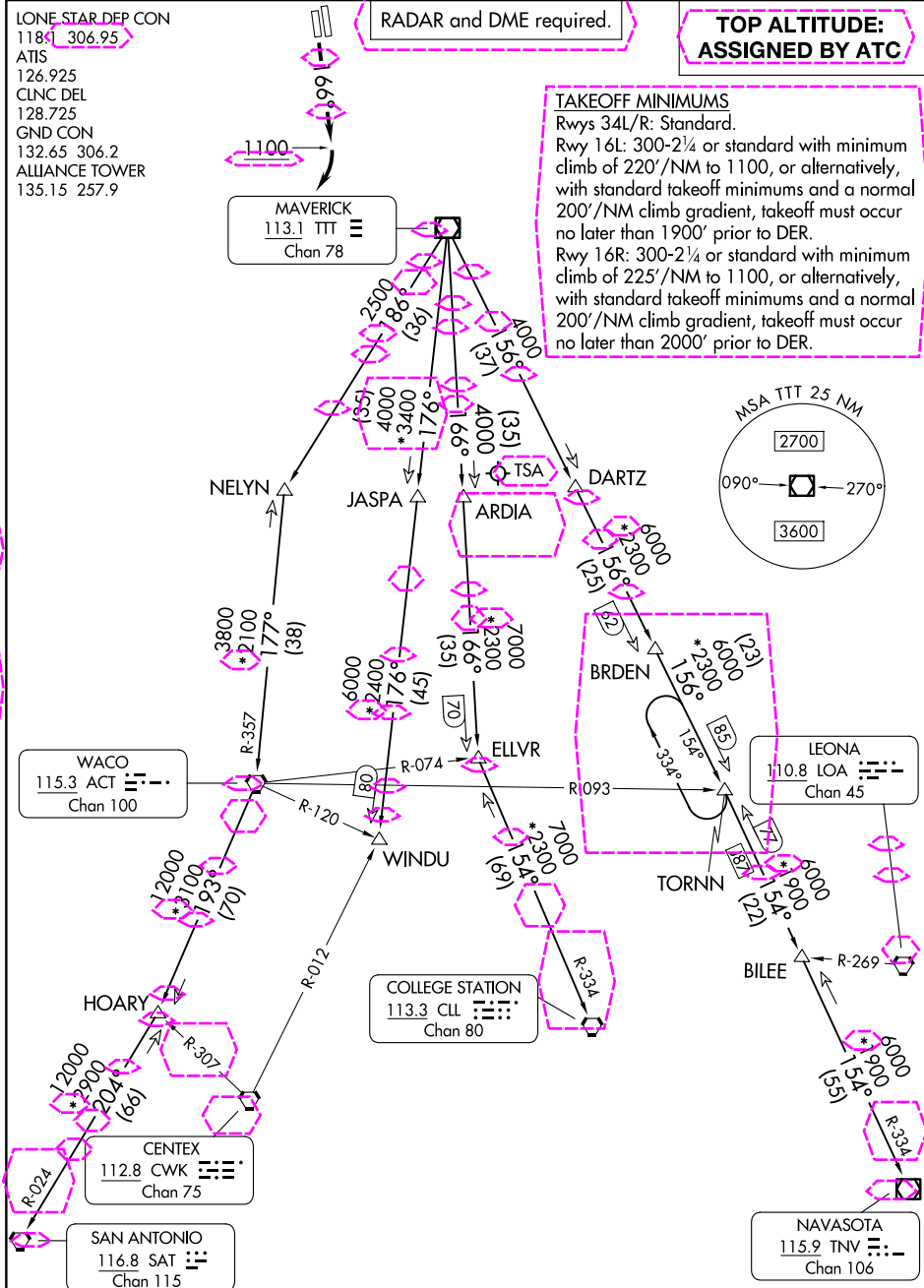
Rwy 16R: 300-2¼ or standard with minimum climb of 225'/NM to 1100, or alternatively, with standard takeoff minimums and a normal 200'/NM climb gradient, takeoff must occur no later than 2000' prior to DER.

MSA TTT 25 NM



SC-2, 07 AUG 2025 to 04 SEP 2025

SC-2, 07 AUG 2025 to 04 SEP 2025



(CONTINUED ON FOLLOWING PAGE)

NOTE: Chart not to scale.

JOE POOL EIGHT DEPARTURE

(JPOOL8, TTT) 07AUG25

FORT WORTH, TEXAS
PEROT FLD/FORT WORTH ALLIANCE (AFW)