



ILS or LOC RWY 16L

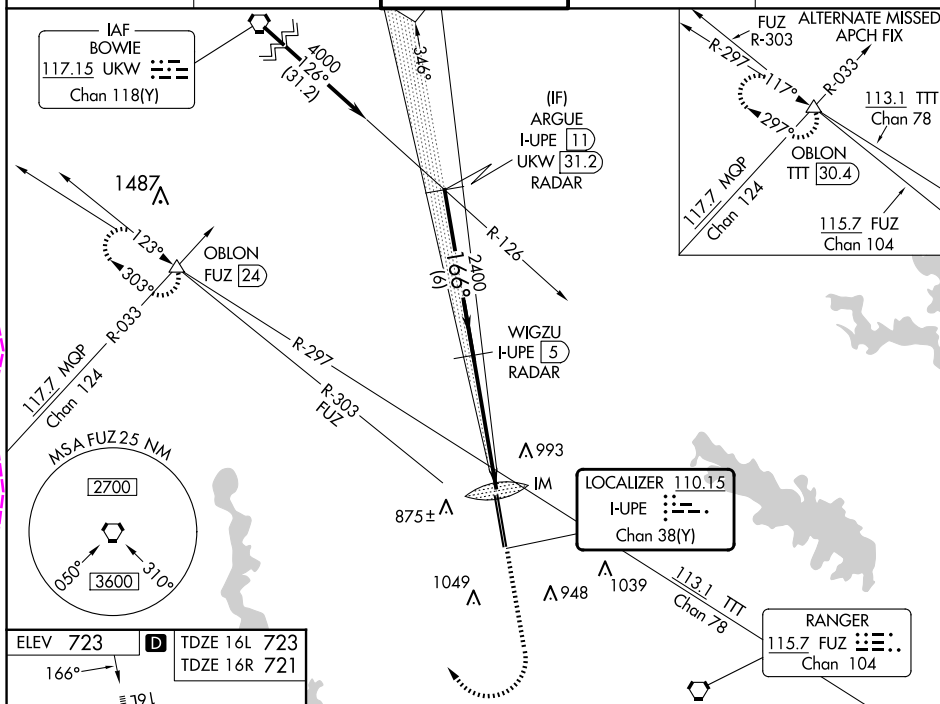
PEROT FLD/FORT WORTH ALLIANCE (AFW)

LOC/DME I-UEP	APP CRS	16L	16R
<u>110.15</u>		10600	10409
Chan 38 (Y)	166°	TDZE 723	721
		Apt Elev 723	723

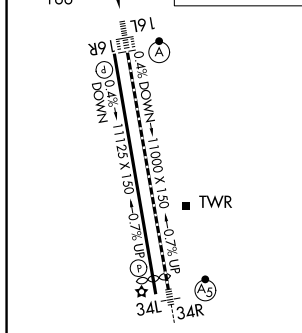
ALSF-2

MISSED APPROACH: Climb to 1200 then climbing right turn to 3000 on heading 330° and FUZ VORTAC R-303 to OBLON INT/FUZ 24 DME and hold.

DME or RADAR required.		ALSF-2 	MISSED APPROACH: Climb to 1200 then climbing right turn to 3000 on heading 330° and FUZ VORTAC R-303 to OBLON INT/FUZ 24 DME and hold.	
 Circling NA east of Rwy 16L-34R. For inop ALS, increase S-ILS 16L Cat E visibility to RVR 4000 and S-LOC 16L Cat C/D/E visibility to RVR 6000.				
ATIS 126.925	LONE STAR APP CON 118.1 306.95	ALLIANCE TOWER 135.15 257.9	GND CON 132.65 306.2	CLNC DEL 128.725



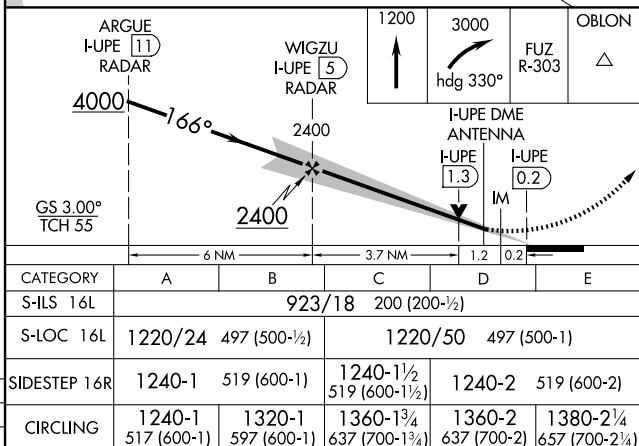
ELEV 723	D	TDZE 16L 723
166° →		TDZE 16R 721



TDZ/CL Rwy 16L and 34R
HIRL Rwy 16L-34R and 16R-34L
REIL Rwy 16R and 34L

FAF to MAP 5.1 NM

Knots	60	90	120	150	180
Min:Sec	5:06	3:24	2:33	2:02	1:42



FORT WORTH, TEXAS

Amdt 8A 21MAR24

PEROT FLD/FORT WORTH ALLIANCE (AFW)

32°59'N-97°19'W

ILS or LOC RWY 16L

SC-2, 10 JUL 2025 to 07 AUG 2025

SC-2, 10 JUL 2025 to 07 AUG 2025

FORT WORTH, TEXAS

AL-6918 (FAA)

25219

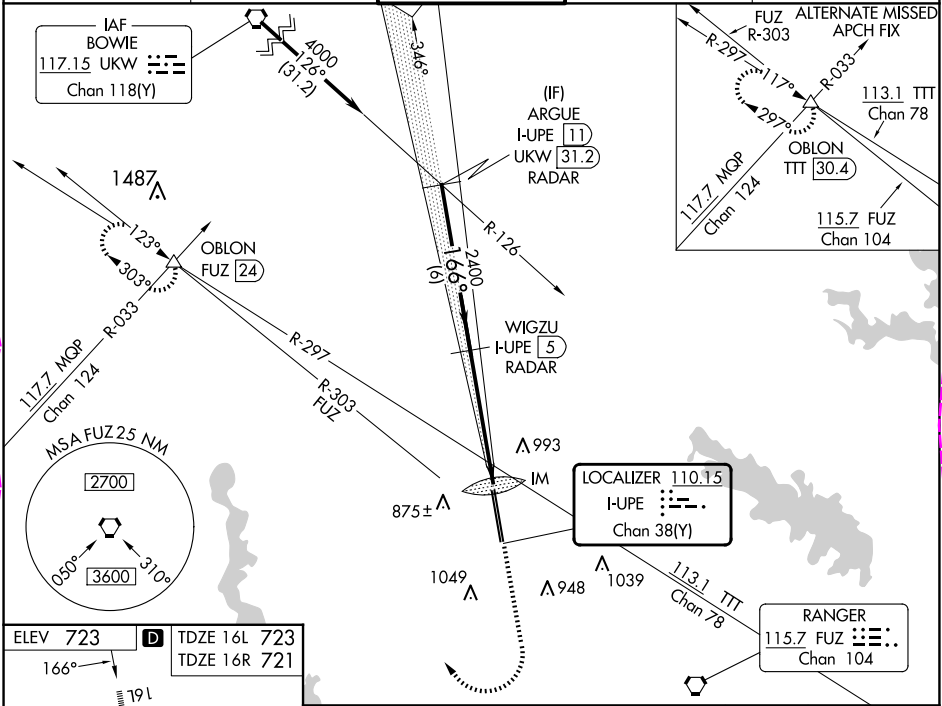
LOC/DME I-UPE 110.15 Chan 38(Y)	APP CRS 166°	Rwy Ldg TDZE Apt Elev	16L 10600 723 723	16R 10410 721 723
---	------------------------	-----------------------------	---	---

ILS or LOC RWY 16L

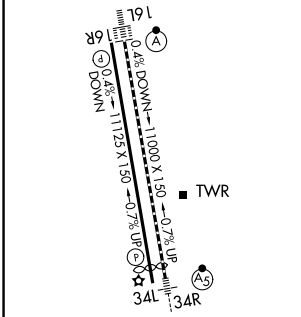
PEROT FLD/FORT WORTH ALLIANCE (A'F'W)

DME or RADAR required.	ALSF-2	MISSED APPROACH: Climb to 1200 then climbing right turn to 3000 on heading 330° and FUZ VORTAC R-303 to OBLON INT/FUZ 24 DME and hold.
------------------------	--------	---

ATIS 126.925	LONE STAR APP CON 118.1 306.95	ALLIANCE TOWER 135.15 257.9	GND CON 132.65 306.2	CLNC DEL 128.725
------------------------	--	---------------------------------------	--------------------------------	----------------------------



ELEV 723	TDZE 16L 723	TDZE 16R 721
----------	--------------	--------------



TDZ/CL Rwy 16L and 34R	
HIRL Rwy 16L-34R and 16R-34L	
REIL Rwy 16R and 34L	
FAF to MAP 5.1 NM	
Knots	60 90 120 150 180
Min:Sec	5:06 3:24 2:33 2:02 1:42

ARGUE I-UPE 11 RADAR	WIGZU I-UPE 5 RADAR	1200	3000	FUZ R-303	OBLON
4000	2400	2400	2400	2400	2400
GS 3.00°	TCH 55	6 NM	3.7 NM	1.2	0.2
CATEGORY	A	B	C	D	E
S-ILS 16L	923/18 200 (200-½)				
S-LOC 16L	1220/24 497 (500-½)	1220/50 497 (500-1)			
SIDESTEP 16R	1240-1 519 (600-1)	1240-1½ 519 (600-1½)	1240-2 519 (600-2)		
CIRCLING	1240-1 517 (600-1)	1320-1 597 (600-1)	1360-1¾ 637 (700-1¾)	1360-2 637 (700-2)	1380-2¼ 657 (700-2¼)

FORT WORTH, TEXAS
Amdt 8A 21MAR24

PEROT FLD/FORT WORTH ALLIANCE (A'F'W)
32°59'N-97°19'W

ILS or LOC RWY 16L

SC-2, 07 AUG 2025 to 04 SEP 2025

SC-2, 07 AUG 2025 to 04 SEP 2025