

(JPOOL7,TTT) 24305

AL-6917 (FAA)

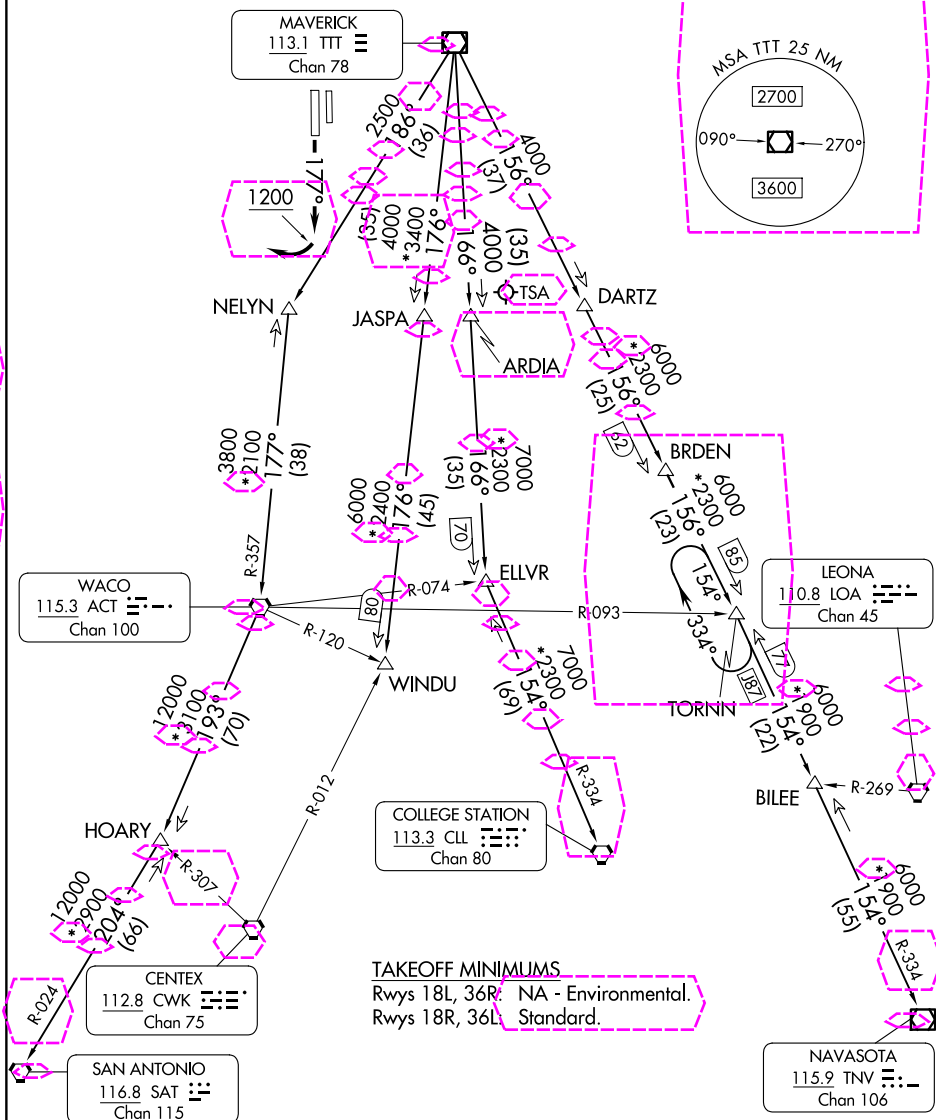
FORT WORTH SPINKS (FWS)  
FORT WORTH, TEXAS

JOE POOL SEVEN DEPARTURE

LONE STAR DEP CON  
135.975 379.9  
ATIS  
120.025  
GND CON  
119.475  
SPINKS TOWER ★  
124.625 (CTAF)

RADAR and DME required.

**TOP ALTITUDE:  
ASSIGNED BY ATC**



(CONTINUED ON FOLLOWING PAGE)

NOTE: Chart not to scale.

JOE POOL SEVEN DEPARTURE

(JPOOL7, ITT) 25JAN24

FORT WORTH, TEXAS  
FORT WORTH SPINKS (FWS)

SC-2, 10 JUL 2025 to 07 AUG 2025

SC-2, 10 JUL 2025 to 07 AUG 2025

(JPOOL8, TTT) 25219

AL-6917 (FAA)

FORT WORTH SPINKS (FWS)

FORT WORTH, TEXAS

# JOE POOL EIGHT DEPARTURE

LONE STAR DEP CON  
135.975 379.9  
ATIS  
120.025  
GND CON  
119.475  
SPINKS TOWER ★  
124.625 (CTAF)

RADAR and DME required.

**TOP ALTITUDE:  
ASSIGNED BY ATC**

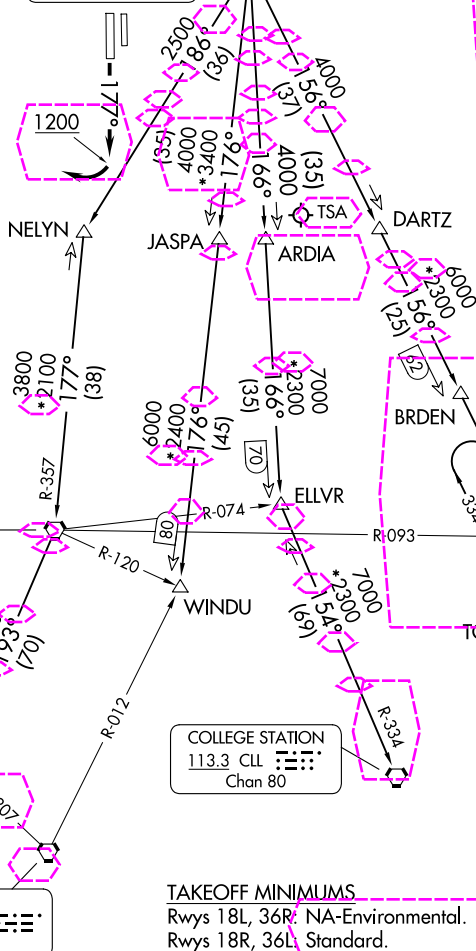
MSA TTT 25 NM

2700

090° → 270°

3600

MAVERICK  
113.1 TTT  
Chan 78



## TAKEOFF MINIMUMS

Rwys 18L, 36R: NA-Environmental.  
Rwys 18R, 36L: Standard.

(CONTINUED ON FOLLOWING PAGE)

NOTE: Chart not to scale.

# JOE POOL EIGHT DEPARTURE

(JPOOL8, TTT) 07AUG25

FORT WORTH, TEXAS

FORT WORTH SPINKS (FWS)

SC-2, 07 AUG 2025 to 04 SEP 2025

SC-2, 07 AUG 2025 to 04 SEP 2025