

MOBRIDGE, SOUTH DAKOTA

AL-6900 (FAA)

25163

WAAS CH 72622 W30A	APP CRS 298°	Rwy Ldg 4410 TDZE 1701 Apt Elev 1716
--	------------------------	---

RNAV (GPS) RWY 30

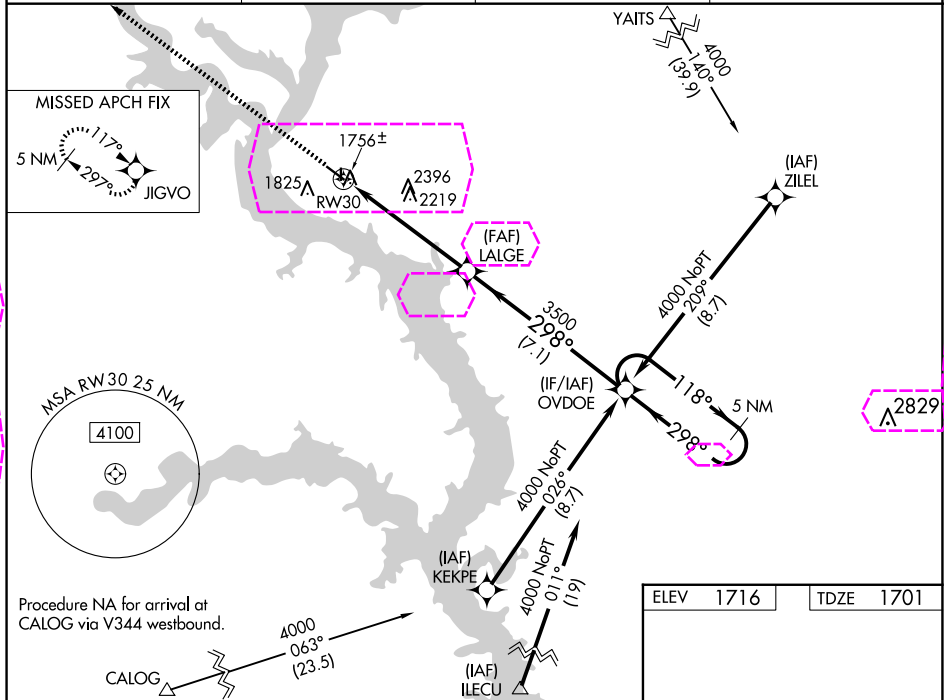
MOBRIDGE MUNI (MBG)


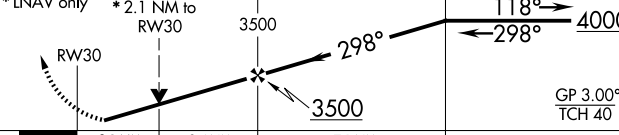
RNP APCH-GPS.

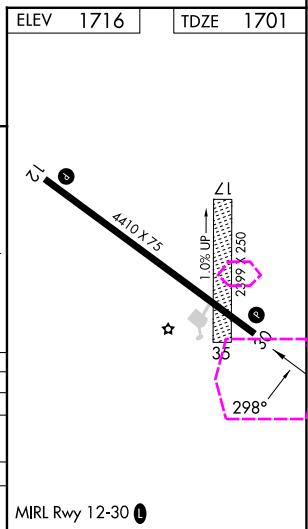
Baro-VNAV NA when using Pierre Rgnl altimeter setting. For uncompensated Baro-VNAV systems, LNAV/VNAV NA below -18°C or above 33°C. Rwy 30 helicopter visibility below ¾ SM NA. VDP NA with Pierre Rgnl altimeter setting. When local altimeter setting not received, use Pierre Rgnl altimeter setting and increase all DA 165 feet and all MDA 180 feet, increase LPV and LNAV/VNAV all Cats visibility ½ mile, LNAV Cat B visibility ¼ mile, Cat C/D ½ mile, Circling Cat A/B/D ¼ mile, Cat C ½ mile. Circling NA for Cat C and D northeast of Rwy 12-30. Circling Rwy 12 NA at night. Circling NA to Rwys 17 and 35.

MISSED APPROACH:
Climb to 4000 direct JIGVO and hold.

ASOS 121.425	MINNEAPOLIS CENTER 135.25 256.7	GCO 121.725	UNICOM 122.8 (CTAF) 0
------------------------	---	-----------------------	---------------------------------



4000 ↑	JIGVO 	VGSI and RNAV glidepath not coincident [VGSI Angle 3.00/TCH 31].	5 NM Holding Pattern	
* LNAV only	* 2.1 NM to RW30	LALGE 3500	OVD0E	
				
CATEGORY	A	B	C	D
LPV DA	2050-1½ 349 (400-1½)			
LNAV/ VNAV DA	1993-1 292 (300-1)			
LNAV MDA	2400-1 699 (700-1)	2400-2 699 (700-2)		
CIRCLING	2400-1 684 (700-1)	2400-2 684 (700-2)	2560-2¾ 844 (900-2¾)	



MOBRIDGE, SOUTH DAKOTA
Amdt 1B 11AUG22

45°33'N-100°24'W

MOBRIDGE MUNI (MBG)
RNAV (GPS) RWY 30

MOBRIDGE, SOUTH DAKOTA

AL-6900 (FAA)

25219

WAAS CH 72622 W30A	APP CRS 298°	Rwy Ldg 4410 TDZE 1701 Apt Elev 1716
--	------------------------	---

RNAV (GPS) RWY 30

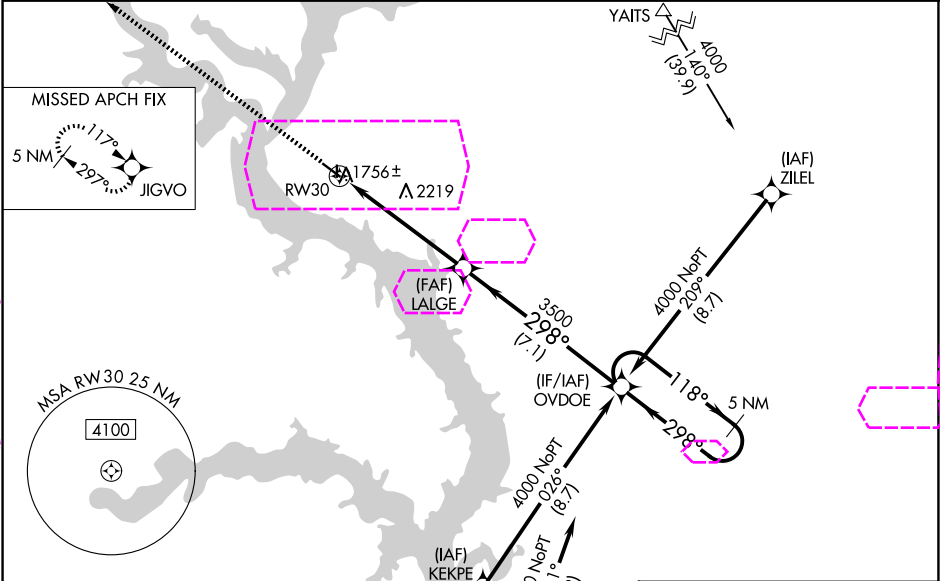
MOBRIDGE MUNI (MBG)

RNP APCH-GPS.

Baro-VNAV NA when using Pierre Rgnl altimeter setting. For uncompensated Baro-VNAV systems, LNAV/VNAV NA below -18°C or above 33°C. Rwy 30 helicopter visibility below ¾ SM NA. VDP NA with Pierre Rgnl altimeter setting. When local altimeter setting not received, use Pierre Rgnl altimeter setting and increase all DA 165 feet and all MDA 180 feet, increase LPV and LNAV/VNAV all Cats visibility ½ mile, LNAV Cat B visibility ¼ mile, Cat C/D ½ mile, Circling Cat A/B/D ¼ mile, Cat C ½ mile. Circling NA for Cat C and D northeast of Rwy 12-30. Circling Rwy 12 NA at night. Circling NA to Rwys 17 and 35.

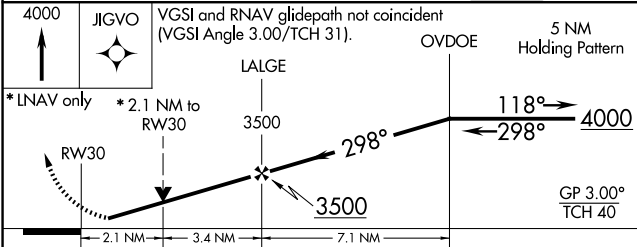
MISSED APPROACH:
Climb to 4000 direct
JIGVO and hold.

ASOS 121.425	MINNEAPOLIS CENTER 135.25 256.7	GCO 121.725	UNICOM 122.8 (CTAF) 0
------------------------	---	-----------------------	---------------------------------

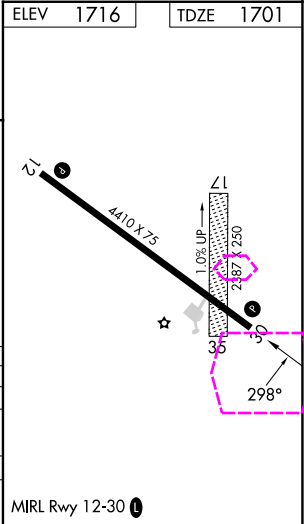


Procedure NA for arrival at CALOG via V344 westbound.

CALOG 4000 063° (23.5)



CATEGORY	THRESHOLD	A	B	C	D
LPV DA			2050-1 1/8	349 (400-1 1/8)	
LNAV/VNAV DA			1993-1	292 (300-1)	
LNAV MDA		2400-1 699 (700-1)	2400-2 699 (700-2)		
CIRCLING		2400-1 684 (700-1)	2400-2 684 (700-2)	2560-2 3/4 844 (900-2 3/4)	



MOBRIDGE, SOUTH DAKOTA
Amdt 1B 11AUG22

45°33'N-100°24'W

RNAV (GPS) RWY 30

NC-1, 07 AUG 2025 to 04 SEP 2025

NC-1, 07 AUG 2025 to 04 SEP 2025