

MOBRIDGE, SOUTH DAKOTA

AL-6900 (FAA)

25163

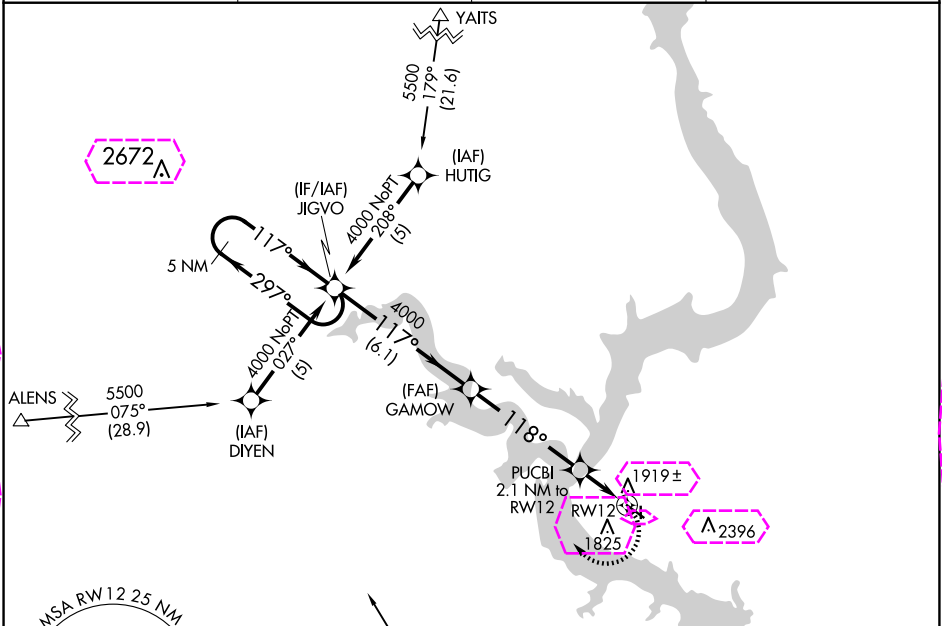
APP CRS	Rwy Ldg	4410
118°	TDZE	1703
	Apt Elev	1715

# RNAV (GPS) RWY 12

MOBRIDGE MUNI (MBG)

RNP APCH-GPS.	MISSED APPROACH: Climbing right turn to 4000 direct JIGVO and hold.
Rwy 12 helicopter visibility reduction below 1 SM NA. If local altimeter setting not received, use Pierre Rgnl altimeter setting and increase all MDAs 180 feet. Circling NA for Cat C and D northeast of Rwy 12-30. Procedure NA at night. Circling NA to Rwys 17 and 35.	

ASOS 121.425	MINNEAPOLIS CENTER 135.25 256.7	GCO 121.725	UNICOM 122.8 (CTAF) 0
-----------------	------------------------------------	----------------	--------------------------



5 NM Holding Pattern		JIGVO	GAMOW	PUCBI	RW12
4000		4000	4000	2400	2400
297°		117°	118°	118°	118°
117°		117°	118°	118°	118°
6.1 NM		4.9 NM	2.1 NM	2.1 NM	2.1 NM
VGSi and descent angles not coincident (VGSi Angle 3.00/TCH 30).					
CATEGORY	A	B	C	D	
RNAV MDA	2260-1	557 (600-1)	2260-1½ 557 (600-1½)	2260-1¾ 557 (600-1¾)	
CIRCLING	2360-1	645 (700-1)	2360-1¾ 645 (700-1¾)	2560-2¾ 845 (900-2¾)	

MOBRIDGE, SOUTH DAKOTA  
Orig-B 11AUG22

45°33'N-100°24'W

# RNAV (GPS) RWY 12

NC-1, 10 JUL 2025 to 07 AUG 2025

NC-1, 10 JUL 2025 to 07 AUG 2025

MOBRIDGE, SOUTH DAKOTA

AL-6900 (FAA)

25219

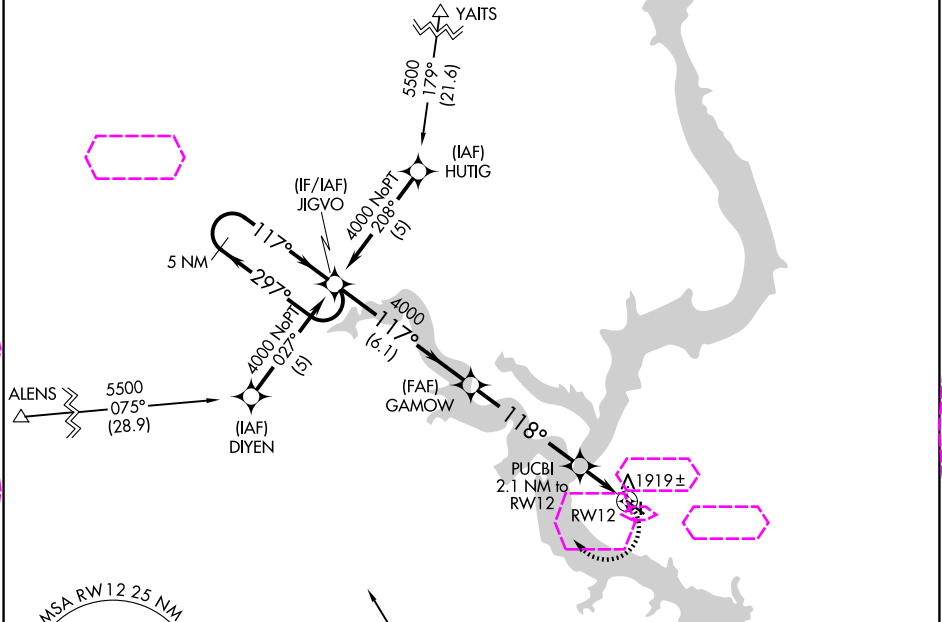
APP CRS	Rwy Ldg	4410
118°	TDZE	1703
	Apt Elev	1715

# RNAV (GPS) RWY 12

MOBRIDGE MUNI (MBG)

RNP APCH-GPS.	MISSED APPROACH: Climbing right turn to 4000 direct JIGVO and hold.
Rwy 12 helicopter visibility reduction below 1 SM NA. If local altimeter setting not received, use Pierre Rgnl altimeter setting and increase all MDAs 180 feet. Circling NA for Cat C and D northeast of Rwy 12-30. Procedure NA at night. Circling NA to Rwy 17 and 35.	

ASOS 121.425	MINNEAPOLIS CENTER 135.25 256.7	GCO 121.725	UNICOM 122.8 (CTAF) 0
-----------------	------------------------------------	----------------	--------------------------



MSA RW 12 25 NM 4100		ELEV 1715 TDZE 1703	
<p>5 NM Holding Pattern</p> <p>JIGVO GAMOW PUCBI RW12</p> <p>4000 3.06° TCH 40 2.1 NM to RW12 2400</p> <p>VGSI and descent angles not coincident (VGSI Angle 3.00/TCH 30).</p> <p>6.1 NM 4.9 NM 2.1 NM</p>			
CATEGORY	A	B	C
LNNAV MDA	2260-1 557 (600-1)	2260-1½ 557 (600-1½)	2260-1¾ 557 (600-1¾)
CIRCLING	2360-1 645 (700-1)	2360-1¾ 645 (700-1¾)	2560-2¾ 845 (900-2¾)

MOBRIDGE, SOUTH DAKOTA  
Orig-B 11AUG22

45°33'N-100°24'W

MOBRIDGE MUNI (MBG)  
RNAV (GPS) RWY 12

NC-1, 07 AUG 2025 to 04 SEP 2025

NC-1, 07 AUG 2025 to 04 SEP 2025