

WILLISTON, FLORIDA

AL-6898 (FAA)

21252

APP CRS	Rwy Idg	6669
049°	TDZE	73
	Apt Elev	76

# RNAV (GPS) RWY 5

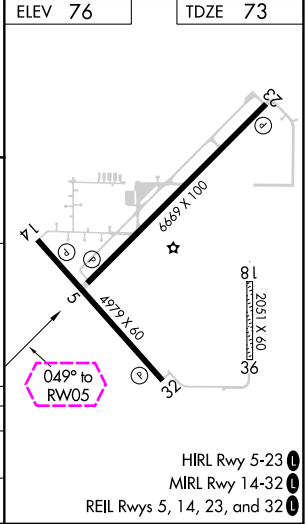
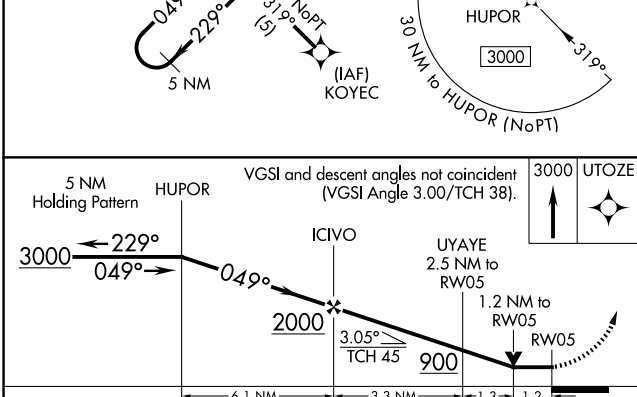
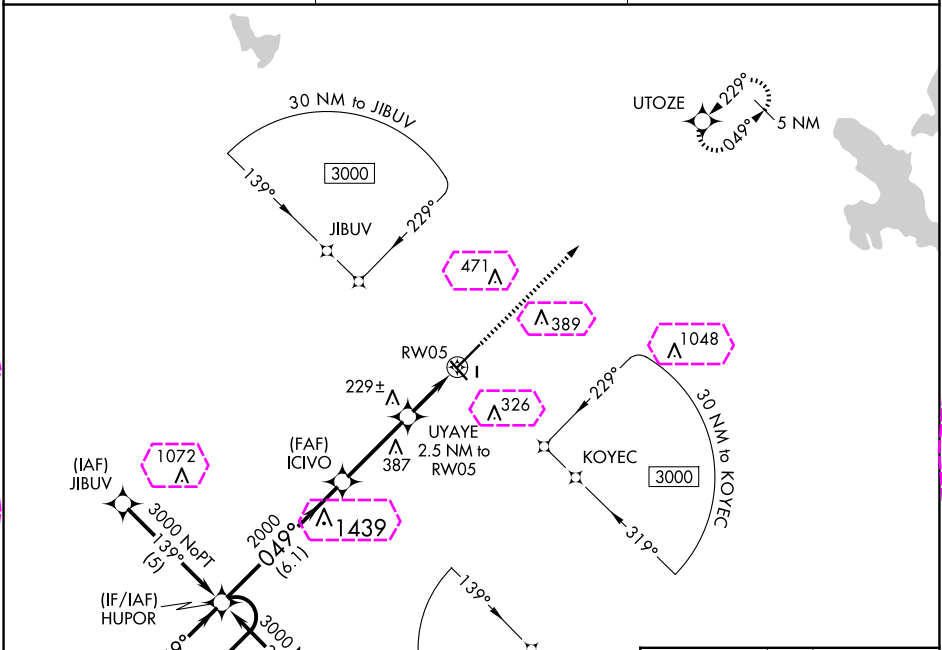
WILLISTON MUNI (X60)

RNP APCH.

When local altimeter setting not received, use Ocala altimeter setting and increase all MDAs 60 feet and all Cat C visibilities ¼ SM. Circling Rwy 14, 32 NA at night. Rwy 5 helicopter visibility reduction below ¾ SM NA. Circling NA to Rwy 18 and 36.

MISSED APPROACH:  
Climb to 3000 direct  
UTOZE and hold.

AWOS-3T 118.425	JACKSONVILLE APP CON 118.6 251.15	UNICOM 122.975 (CTAF) 0
--------------------	--------------------------------------	----------------------------



CATEGORY	A	B	C	D
LNNAV MDA	480-1	407 (500-1)	480-1¼ 407 (500-1¼)	NA
CIRCLING	520-1 444 (500-1)	640-1 564 (600-1)	840-2¼ 764 (800-2¼)	NA

WILLISTON, FLORIDA  
Orig-D 09SEP21

29°21'N-82°28'W

WILLISTON MUNI (X60)

# RNAV (GPS) RWY 5

HIRL Rwy 5-23 0  
MIRL Rwy 14-32 0  
REIL Rwy 5, 14, 23, and 32 0

WILLISTON, FLORIDA

AL-6898 (FAA)

25219

APP CRS	Rwy Ldg	6669
049°	TDZE	73
	Apt Elev	76

# RNAV (GPS) RWY 5

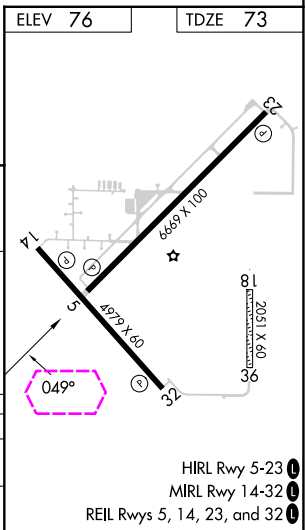
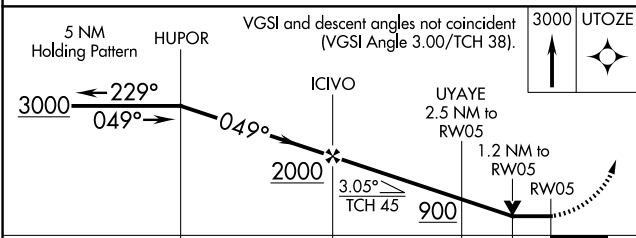
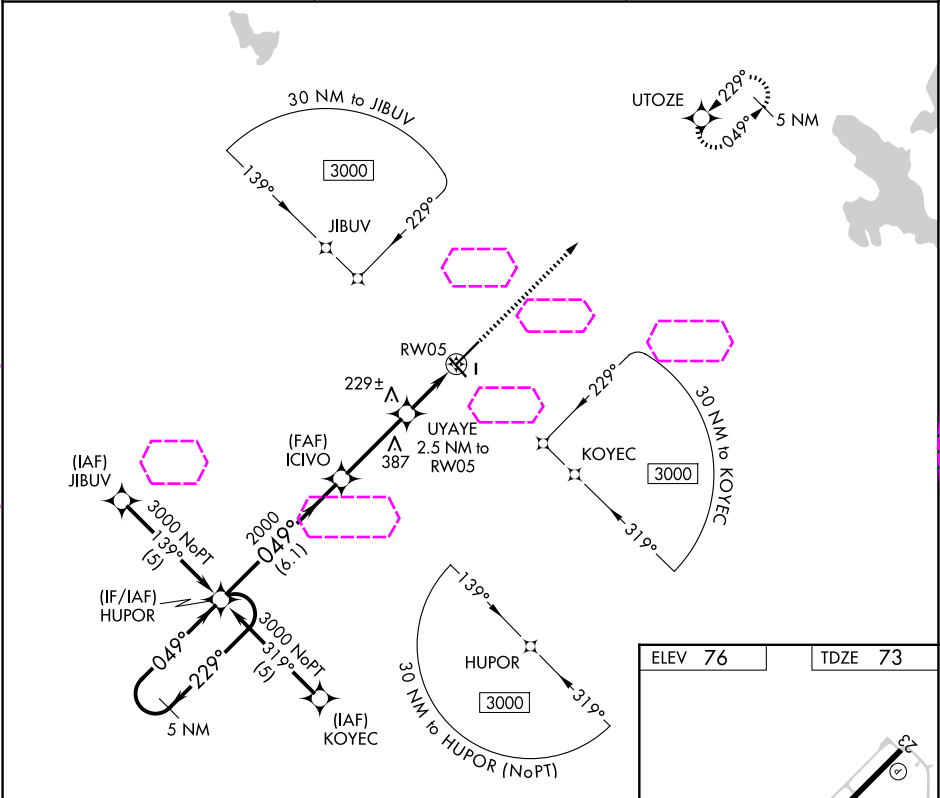
WILLISTON RGNL (X60)

RNP APCH.

When local altimeter setting not received, use Ocala altimeter setting and increase all MDAs 60 feet and all Cat C visibilities ¼ SM. Circling Rwy 14, 32 NA at night. Rwy 5 helicopter visibility reduction below ¾ SM NA. Circling NA to Rwy 18 and 36.

MISSED APPROACH:  
Climb to 3000 direct  
UTOZE and hold.

AWOS-3T 118.425	JACKSONVILLE APP CON 118.6 251.15	UNICOM 122.975 (CTAF) 0
--------------------	--------------------------------------	----------------------------



CATEGORY	A	B	C	D
LNNAV MDA	480-1	407 (500-1)	480-1¼ 407 (500-1¼)	NA
CIRCLING	520-1 444 (500-1)	640-1 564 (600-1)	840-2¼ 764 (800-2¼)	NA

WILLISTON, FLORIDA

Orig-D 09SEP21

29°21'N-82°28'W

WILLISTON RGNL (X60)

# RNAV (GPS) RWY 5

SE-3, 07 AUG 2025 to 04 SEP 2025

SE-3, 07 AUG 2025 to 04 SEP 2025

HIRL Rwy 5-23 0

MRL Rwy 14-32 0

REIL Rwy 5, 14, 23, and 32 0