

WILLISTON, FLORIDA

AL-6898 (FAA)

21252

APP CRS	Rwy Idg	6669
229°	TDZE	76
	Apt Elev	76

RNAV (GPS) RWY 23

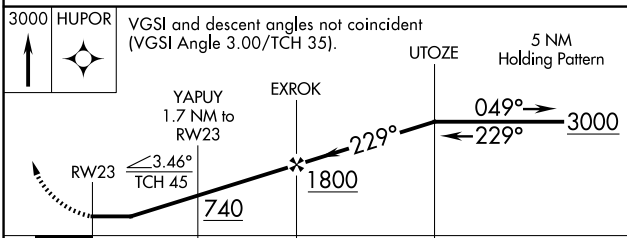
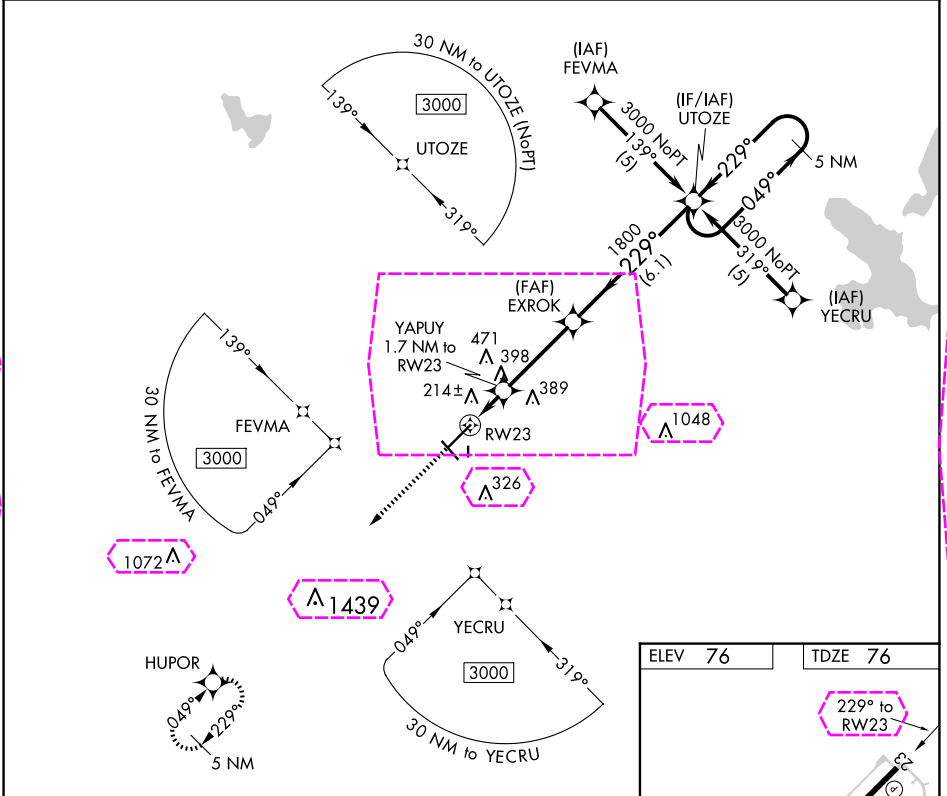
WILLISTON MUNI (X60)

RNP APCH.

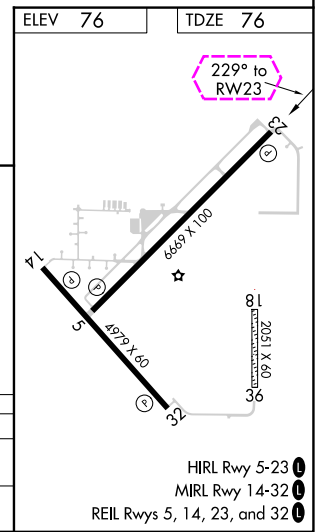
When local altimeter setting not received, use Ocala altimeter setting and increase all MDAs 60 feet and all Cat C visibilities ¼ SM. Circling Rwy 14, 32 NA at night. Rwy 23 helicopter visibility reduction below ¾ SM NA. Circling NA to Rwy 18 and 36.

MISSED APPROACH:
Climb to 3000 direct
HUPOR and hold.

AWOS-3T 118.425	JACKSONVILLE APP CON 118.6 251.15	UNICOM 122.975 (CTAF) 0
--------------------	--------------------------------------	----------------------------



CATEGORY	A	B	C	D
LNNAV MDA	480-1	404 (500-1)	480-1¼ 404 (500-1¼)	NA
CIRCLING	520-1 444 (500-1)	640-1 564 (600-1)	840-2¼ 764 (800-2¼)	NA



WILLISTON, FLORIDA

Orig-D 09SEP21

29°21'N-82°28'W

WILLISTON MUNI (X60)

RNAV (GPS) RWY 23

HIRL Rwy 5-23 0
MIRL Rwy 14-32 0
REIL Rwy 5, 14, 23, and 32 0

SE-3, 10 JUL 2025 to 07 AUG 2025

SE-3, 10 JUL 2025 to 07 AUG 2025

WILLISTON, FLORIDA

AL-6898 (FAA)

25219

APP CRS	Rwy Ldg	6669
229°	TDZE	76
	Apt Elev	76

RNAV (GPS) RWY 23

WILLISTON RGNL (X60)

RNP APCH.

When local altimeter setting not received, use Ocala altimeter setting and increase all MDAs 60 feet and all Cat C visibilities ¼ SM. Circling Rwy 14, 32 NA at night. Rwy 23 helicopter visibility reduction below ¾ SM NA. Circling NA to Rwy 18 and 36.

MISSED APPROACH:
Climb to 3000 direct
HUPOR and hold.

AWOS-3T 118.425	JACKSONVILLE APP CON 118.6 251.15	UNICOM 122.975 (CTAF) 0
--------------------	--------------------------------------	----------------------------

