

PERU, ILLINOIS

AL-6866 (FAA)

23278

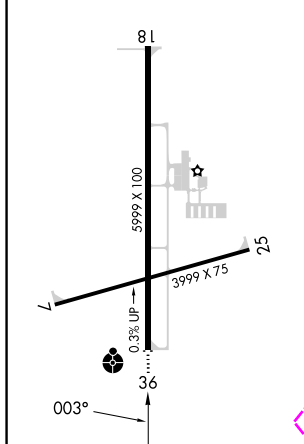
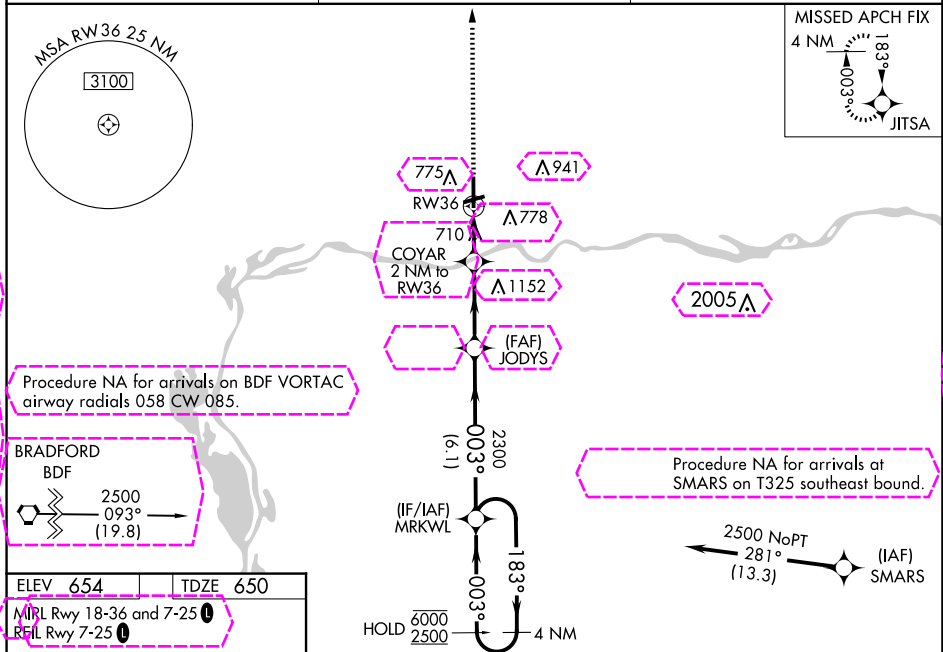
WAAS CH 82037 W36A	APP CRS 003°	Rwy Idg 5999 TDZE 650 Apt Elev 654
--	------------------------	---

RNAV (GPS) RWY 36

ILLINOIS VALLEY RGNL-WALTER A DUNCAN FLD (VYS)

RNP APCH - GPS.	ODALS 	MISSED APPROACH: Climb to 2500 direct JITSA and hold.
-----------------	--------------------	--

AWOS-3 120.025	CHICAGO CENTER 123.75 259.1	UNICOM 123.0 (CTAF)
--------------------------	---------------------------------------	-------------------------------



ELEV 654 TDZE 650		MISSED APCH FIX 4 NM 183° 003° JITSA	
MRL Rwy 18-36 and 7-25 RFL Rwy 7-25		Procedure NA for arrivals at SMARS on T325 southeast bound.	
BRADFORD BDF 2500 093° (19.8)		Procedure NA for arrivals on BDF VORTAC airway radials 058 CW 085.	
HOLD 6000 2500		2500 NoPT 281° (13.3) (IAF) SMARS	
JITSA		4 NM Holding Pattern	
RW36		MRKWL	
COYAR 2 NM to RW36		JODYS 2300	
1.1 NM to RW36		183° 6000 003° 2500	
1300		GP 3.00° TCH 40	
CATEGORY		A B C D	
LPV DA		900-1 250 (300-1)	
LNAV/VNAV DA		900-1 250 (300-1)	
LNAV MDA		1020-1 370 (400-1)	
CIRCLING		1120-1 466 (500-1)	1240-1 586 (600-1)
		1260-1 3/4 606 (700-1 3/4)	1460-2 1/2 806 (900-2 1/2)

PERU, ILLINOIS

Amend 1A 03NOV22

ILLINOIS VALLEY RGNL-WALTER A DUNCAN FLD (VYS)

41°21'N-89°09'W

RNAV (GPS) RWY 36

PERU, ILLINOIS





AL-6866 (FAA)

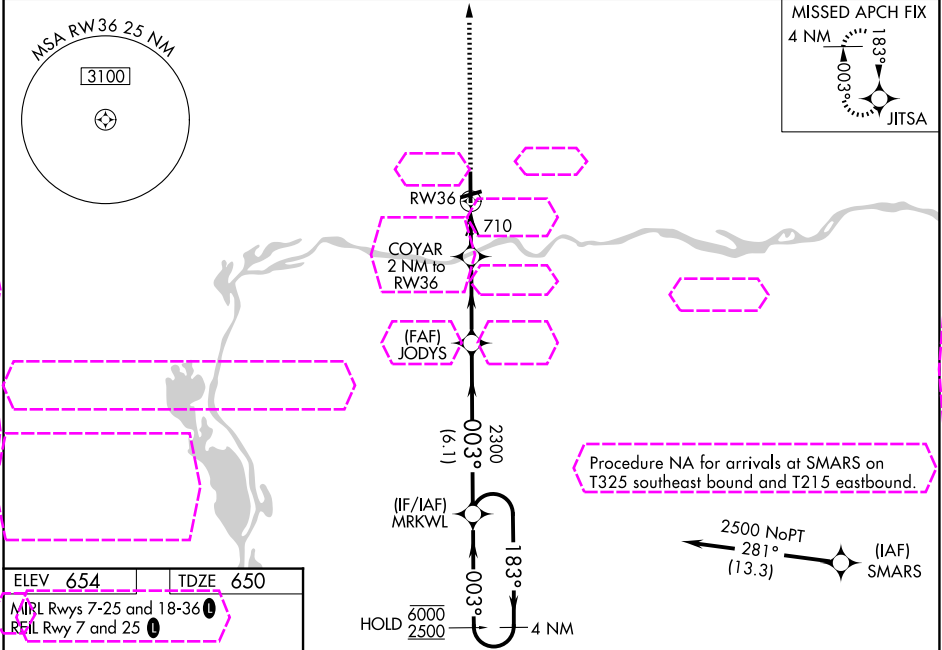
25219

WAAS CH 82037 W36A	APP CRS 003°	Rwy Ldg 5999 TDZE 650 Apt Elev 654
--	------------------------	---

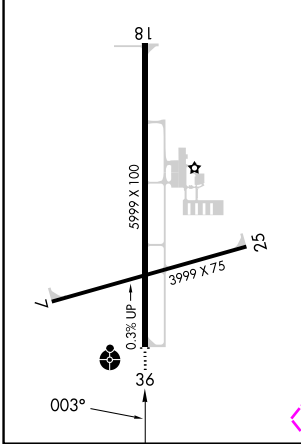
RNAV (GPS) RWY 36

ILLINOIS VALLEY RGNL-WALTER A DUNCAN FLD (VYS)

RNP APCH - GPS.		ODALS 	MISSED APPROACH: Climb to  2600 direct JITSA and hold.
 <div>For uncompensated Baro-VNAV systems, LNAV/VNAV NA below -16°C or above 54°C. Inop table does not apply.</div>			
AWOS-3 120.025	CHICAGO CENTER 123.75 259.1	UNICOM 123.0 (CTAF) 	



ELEV 654	TDZE 650
MIRL Rwy 7-25 and 18-36	REIL Rwy 7 and 25



2600

JITSA

COYAR

2 NM to RW36

JODYS

2300

1.1 NM to RW36

1300

0.9

3.1 NM

MRKWL

183° → 6000

← 003° 2500

GP 3.00°

TCH 40

1.1

0.9

3.1 NM

6.1 NM

003°

2300

CATEGORY	A	B	C	D
LPV DA		900-1	250 (300-1)	
LNAV/VNAV DA		900-1	250 (300-1)	
LNAV MDA		1020-1	370 (400-1)	
CIRCLING	1120-1 466 (500-1)	1240-1 586 (600-1)	1260-1¾ 606 (700-1¾)	1460-2½ 806 (900-2½)

PERU, ILLINOIS

Amel 2 07AUG25

ILLINOIS VALLEY RGNL-WALTER A DUNCAN FLD (VYS)

41°21'N-89°09'W

RNAV (GPS) RWY 36

EC-3, 07 AUG 2025 to 04 SEP 2025

EC-3, 07 AUG 2025 to 04 SEP 2025