

WAAS CH 86937 W18A	APP CRS 183°	Rwy Ldg 5999 TDZE 654 Apt Elev 654
--	------------------------	---

RNAV (GPS) RWY 18

ILLINOIS VALLEY RGNL-WALTER A DUNCAN FLD (VYS)

RNP APCH - GPS.	
-----------------	--

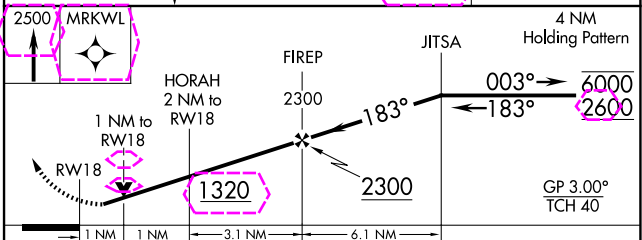
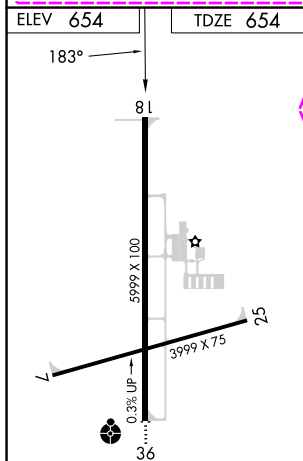
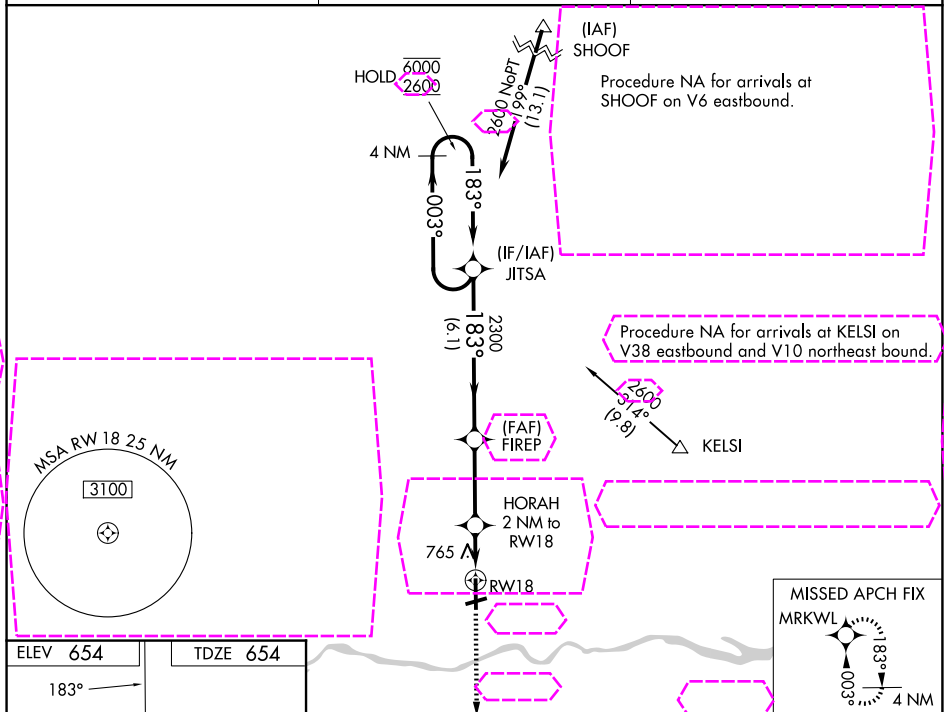
T Rwy 18 helicopter visibility reduction below $\frac{3}{4}$ SM NA.

A For uncompensated Baro-VNAV systems, LNAV/VNAV NA below -16°C or above 54°C.

MISSED APPROACH: Climb to 2500 direct MRKWL and hold.

AWOS-3
120.025

CHICAGO CENTER
123.75 259.1

UNICOM
123.0 (CTAF) **L**

CATEGORY	A	B	C	D
LPV DA	939-1		285 (300-1)	
LNAV/VNAV DA	926-1		272 (300-1)	
LNAV MDA	1020-1		366 (400-1)	
CIRCLING	1120-1 466 (500-1)	1240-1 586 (600-1)	1260-1 ³ / ₄ 606 (700-1 ³ / ₄)	1460-2 ¹ / ₂ 806 (900-2 ¹ / ₂)

PERU, ILLINOIS

Amdt 2 07AUG25

ILLINOIS VALLEY RGNL-WALTER A DUNCAN FLD (VYS)

41°21'N-89°09'W

RNAV (GPS) RWY 18

EC-3, 07 AUG 2025 to 04 SEP 2025

EC-3, 07 AUG 2025 to 04 SEP 2025