



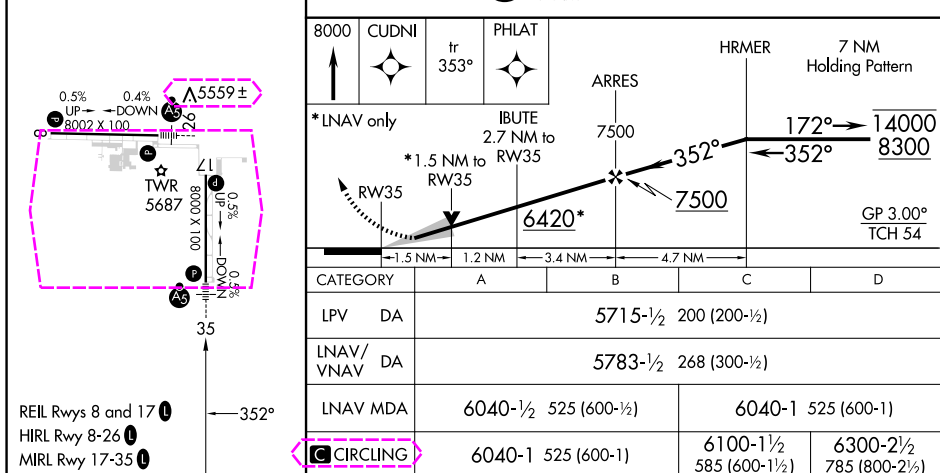
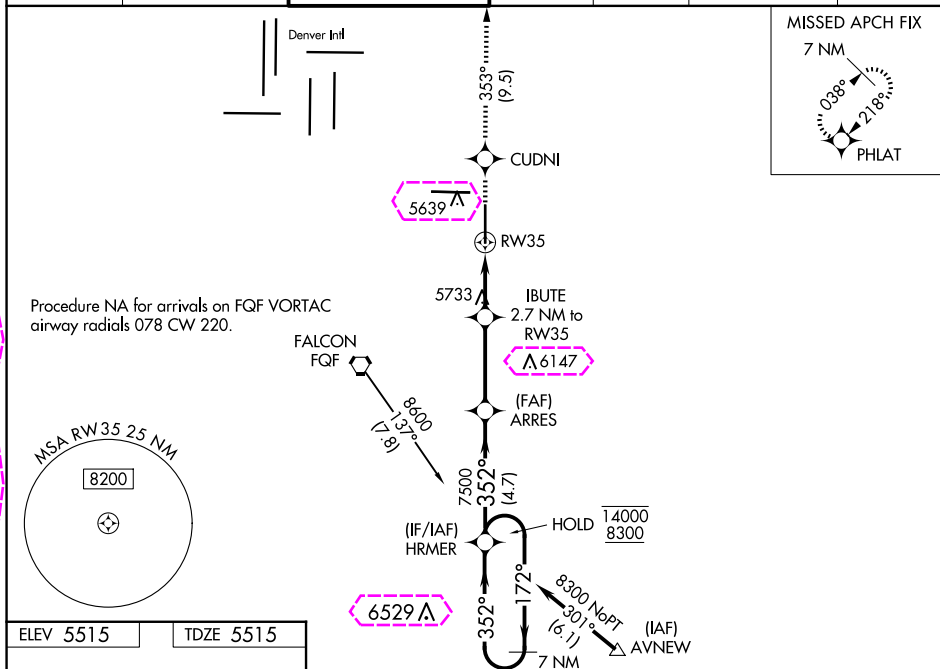
WAAS CH <b>93809</b> <b>W35A</b>	APP CRS <b>352°</b>	Rwy Idg <b>8000</b> TDZE <b>5515</b> Apt Elev <b>5515</b>
--	------------------------	---

# RNAV (GPS) RWY 35

## COLORADO AIR AND SPACE PORT (CFO)

<p>RNP APCH.</p> <p> For uncompensated Baro-VNAV systems, LNAV/VNAV NA below -25°C or above 46°C. For inop ALS, increase LNAV/VNAV all Cats visibility to ½ SM.</p>	<p>MALSR</p> <p></p>	<p>MISSED APPROACH: Climb to 8000 direct CUDNI and on track 353° to PHLAT and hold.</p>
--	---	---

ATIS <b>119.025</b>	DENVER APP CON <b>128.25 371.95</b>	SPACE PORT TOWER ★ <b>120.2 (CTAF) 0</b>	GND CON <b>124.7</b>	CLNC DEL <b>124.7</b>	CLNC DEL <b>121.75</b> (When twr closed)	UNICOM <b>122.95</b>
------------------------	--	---	-------------------------	--------------------------	--	-------------------------

DENVER, COLORADO  
Amdt 2A 30JAN20

39°47'N-104°32'W

COLORADO AIR AND SPACE PORT (CFO)  
RNAV (GPS) RWY 35

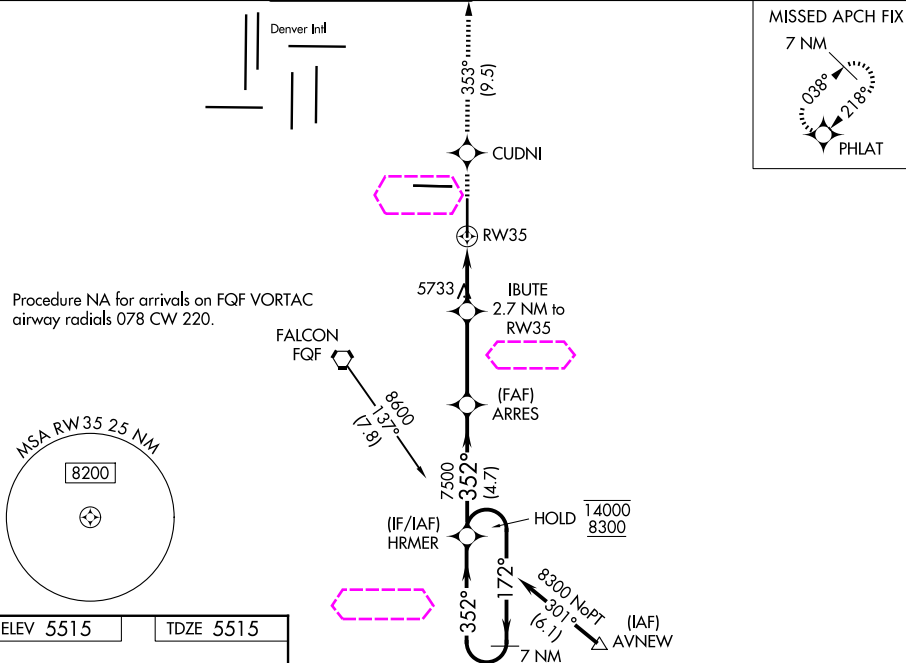
SW-1, 10 JUL 2025 to 07 AUG 2025

SW-1, 10 JUL 2025 to 07 AUG 2025

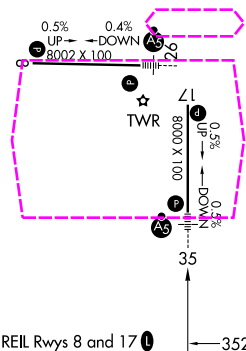
# RNAV (GPS) RWY 35

## COLORADO AIR AND SPACE PORT (CFO)

MISSED APPROACH: Climb to 8000 direct CUDNI and on track 353° to PHLAT and hold.

UNICOM  
122.95

TDZE 5515



REIL Rwy 8 and 17 **L**  
HIRL Rwy 8-26 **L**  
MIRL Rwy 17-25 **L**

8000 ↑	CUDNI ✱	tr 353°	PHLAT ✱				
* LNAV only				1.5 NM 1.2 NM 3.4 NM 4.7 NM	7500 6420* 7500	172° → 14000 ← 352° 8300 GP 3.00° TCH 54	
CATEGORY	A	B	C	D			
LPV DA	5715-½ 200 (200-½)						
LNAV/ VNAV DA	5783-½ 268 (300-½)						
LNAV MDA	6040-½ 525 (600-½)			6040-1 525 (600-1)			
CIRCLING	6040-1 525 (600-1)			6100-1½ 585 (600-1½)		6300-2½ 785 (800-2½)	

COLORADO AIR AND SPACE PORT (CFO)  
RNAV (GPS) RWY 35