

DENVER, COLORADO

AL-6851 (FAA)

23334

WAAS CH <b>93909</b> <b>W26A</b>	APP CRS <b>263°</b>	Rwy Idg <b>8002</b> TDZE <b>5489</b> Apt Elev <b>5515</b>
--	------------------------	---

# RNAV (GPS) RWY 26

COLORADO AIR AND SPACE PORT (CFO)

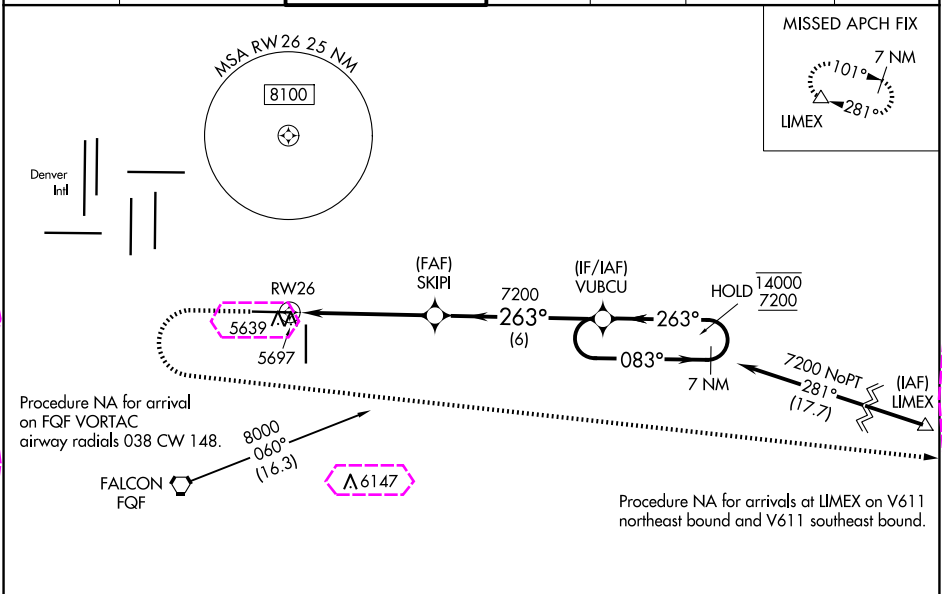
RNP APCH.

**⚠** For uncompensated Baro-VNAV systems, LNAV/VNAV NA below -25°C or above 48°C. For inop ALS, increase LNAV/VNAV all Cats visibility to 1½ SM, and increase LNAV Cat C/D visibility to 1¾ SM.

MALSR

MISSED APPROACH: (Do not exceed 200K until LIMEX) Climb to 6100 then climbing left turn to 7600 direct LIMEX and hold.

ATIS <b>119.025</b>	DENVER APP CON <b>128.25 371.95</b>	SPACE PORT TOWER ★ <b>120.2 (CTAF) 0</b>	GND CON <b>124.7</b>	CLNC DEL <b>124.7</b>	CLNC DEL <b>121.75</b> (When twr closed)	UNICOM <b>122.95</b>
------------------------	--	---	-------------------------	--------------------------	--	-------------------------



*LNAV only				
*1.4 NM to RW26				
RW26				
1.4 NM				
3.8 NM				
6 NM				
CATEGORY	A	B	C	D
LPV DA	5689-½ 200 (200-½)			
LNAV/VNAV DA	5858-¾ 369 (400-¾)			
LNAV MDA	5960-½	471 (500-½)	5960-1	471 (500-1)
CIRCLING	6000-1	485 (500-1)	6100-1½ 585 (600-1½)	6300-2½ 785 (800-2½)

ELEV 5515 TDZE 5489

6100 7600 LIMEX

SKIPI 7200

VUBCU 7200

7 NM Holding Pattern

083° 14000 7200

263°

GP 3.00° TCH 50

0.5% UP 0.4% DOWN

8002 X 100

Λ 5559 ±

TWR 5687

00 X 0008

0010

0.5% 0.4%

35

REIL Rwy 8 and 17  
HIRL Rwy 8-26  
MIRL Rwy 17-35

SW-1, 10 JUL 2025 to 07 AUG 2025

SW-1, 10 JUL 2025 to 07 AUG 2025

DENVER, COLORADO

AL-6851 (FAA)

25219

WAAS CH <b>93909</b> <b>W26A</b>	APP CRS <b>263°</b>	Rwy Ldg TDZE Apt Elev	<b>8002</b> <b>5489</b> <b>5515</b>
--	------------------------	-----------------------------	---

# RNAV (GPS) RWY 26

COLORADO AIR AND SPACE PORT (CFO)

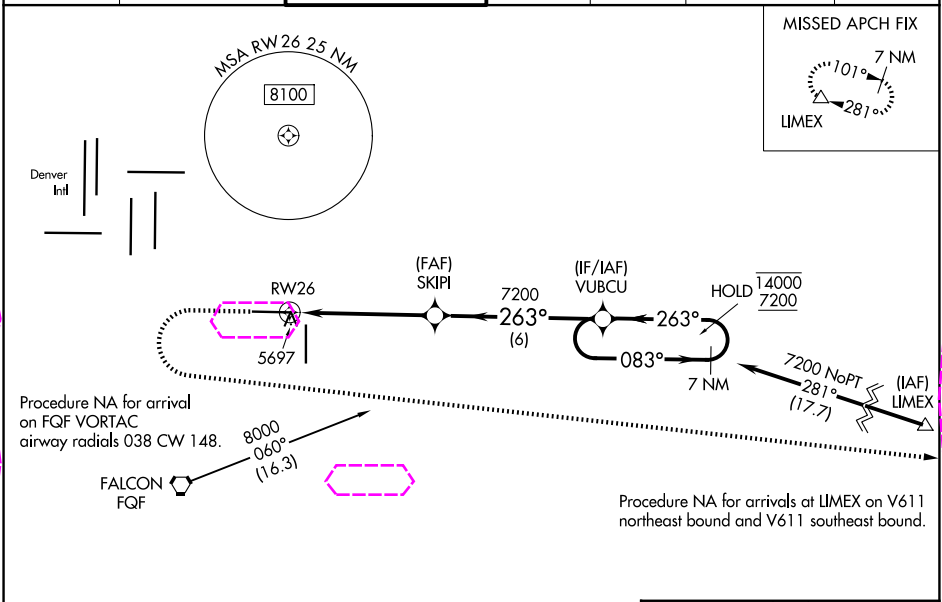
RNP APCH.

**⚠** For uncompensated Baro-VNAV systems, LNAV/VNAV NA below -25°C or above 48°C. For inop ALS, increase LNAV/VNAV all Cats visibility to 1½ SM, and increase LNAV Cat C/D visibility to 1¾ SM.

MALSR

MISSED APPROACH: (Do not exceed 200K until LIMEX) Climb to 6100 then climbing left turn to 7600 direct LIMEX and hold.

ATIS <b>119.025</b>	DENVER APP CON <b>128.25 371.95</b>	SPACE PORT TOWER ★ <b>120.2 (CTAF) 0</b>	GND CON <b>124.7</b>	CLNC DEL <b>124.7</b>	CLNC DEL <b>121.75</b> (When twr closed)	UNICOM <b>122.95</b>
------------------------	--	---	-------------------------	--------------------------	--	-------------------------



<div>6100 7600 LIMEX</div> <div>*LNAV only</div> <div></div>				
CATEGORY	A	B	C	D
LPV DA	5689-½ 200 (200-½)			
LNAV/VNAV DA	5858-¾ 369 (400-¾)			
LNAV MDA	5960-½ 471 (500-½)	5960-1 471 (500-1)		
CIRCLING	6000-1 485 (500-1)	6100-1½ 585 (600-1½)	6300-2½ 785 (800-2½)	

ELEV 5515 TDZE 5489

REIL Rwy 8 and 17  
HIRL Rwy 8-26  
MIRL Rwy 17-35

DENVER, COLORADO  
Amdt 2A 30JAN20

39°47'N-104°32'W

## COLORADO AIR AND SPACE PORT (CFO)

# RNAV (GPS) RWY 26

SW-1, 07 AUG 2025 to 04 SEP 2025

SW-1, 07 AUG 2025 to 04 SEP 2025