

DENVER, COLORADO


AL-6851 (FAA)

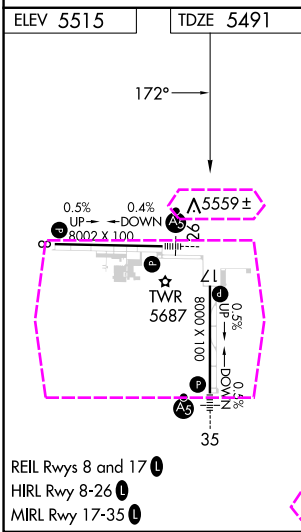
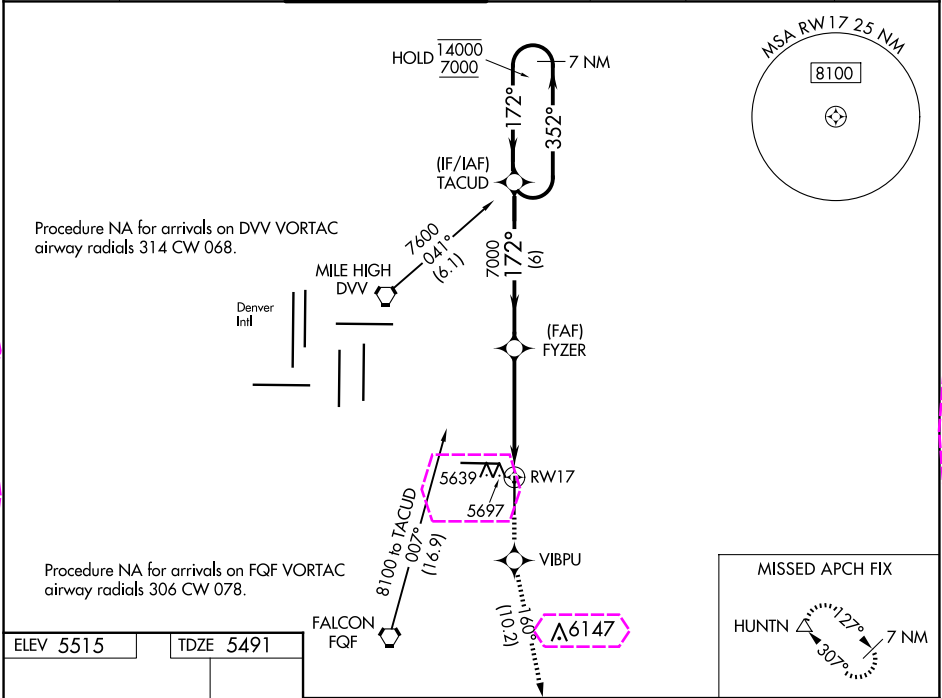
23334

WAAS CH <b>82209</b> <b>W17A</b>	APP CRS <b>172°</b>	Rwy Idg <b>8000</b> TDZE <b>5491</b> Apt Elev <b>5515</b>
--	------------------------	---

# RNAV (GPS) RWY 17

COLORADO AIR AND SPACE PORT (CFO)

RNP APCH-GPS.		MISSED APPROACH: Climb to 8500 direct VIBPU and on track 160° to HUNTN and hold.				
	For uncompensated Baro-VNAV systems, LNAV/VNAV NA below -25°C or above 48°C.					
ATIS <b>119.025</b>	DENVER APP CON <b>128.25 371.95</b>	SPACE PORT TOWER ★ <b>120.2 (CTAF) 0</b>	GND CON <b>124.7</b>	CLNC DEL <b>124.7</b>	CLNC DEL <b>121.75</b> (When twr closed)	UNICOM <b>122.95</b>



7 NM Holding Pattern		TACUD	FYZER	8500 ↑	VIBPU ✱	tr 160°	HUNTN △
14000 7000	←352° 172°→	172°→	7000	*1.5 NM to RW17	*LNAV only		
GP 3.00° TCH 55	6 NM		3.1 NM	1.5 NM	RW17		
CATEGORY	A	B	C	D			
LPV DA	5691-3/4 200 (200-3/4)						
LNAV/ VNAV DA	5916-1 3/8 425 (500-1 3/8)						
LNAV MDA	6000-1	509 (500-1)	6000-1 1/2	509 (500-1 1/2)			
<b>CIRCLING</b>	6000-1	485 (500-1)	6100-1 1/2 585 (600-1 1/2)	6300-2 1/2 785 (800-2 1/2)			

DENVER, COLORADO  
Amdt 1D 11AUG22

39°47'N-104°32'W

COLORADO AIR AND SPACE PORT (CFO)  
**RNAV (GPS) RWY 17**

SW-1, 10 JUL 2025 to 07 AUG 2025

SW-1, 10 JUL 2025 to 07 AUG 2025

DENVER, COLORADO



AL-6851 (FAA)

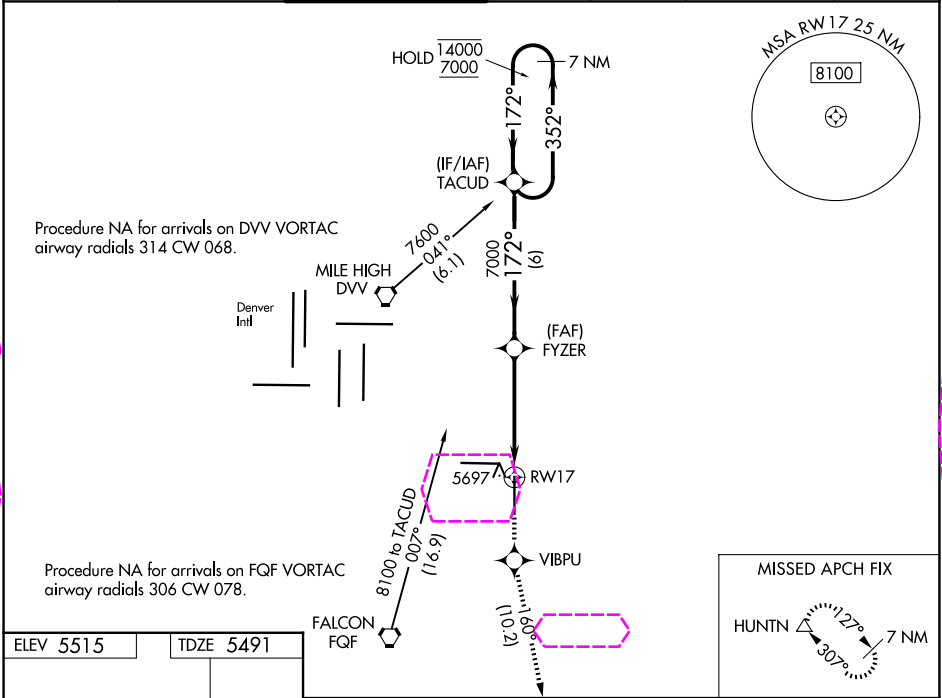
25219

WAAS CH <b>82209</b> <b>W17A</b>	APP CRS <b>172°</b>	Rwy Ldg <b>8000</b> TDZE <b>5491</b> Apt Elev <b>5515</b>
--	------------------------	---

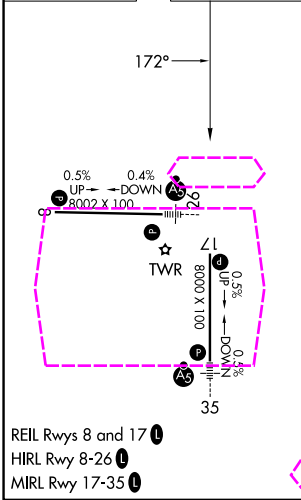
# RNAV (GPS) RWY 17

COLORADO AIR AND SPACE PORT (CFO)

RNP APCH-GPS.		MISSED APPROACH: Climb to 8500 direct VIBPU and on track 160° to HUNTN and hold.				
	For uncompensated Baro-VNAV systems, LNAV/VNAV NA below -25°C or above 48°C.					
ATIS 119.025	DENVER APP CON 128.25 371.95	SPACE PORT TOWER ★ 120.2 (CTAF) 	GND CON 124.7	CLNC DEL 124.7	CLNC DEL 121.75 (When twr closed)	UNICOM 122.95



ELEV 5515	TDZE 5491
-----------	-----------



7 NM Holding Pattern		8500	VIBPU	HUNTN
TACUD		7000	tr 160°	△
14000 ← 352° 7000 → 172°		7000	*1.5 NM to RWY 17	*LNAV only
GP 3.00° TCH 55		6 NM	3.1 NM	1.5 NM
CATEGORY	A	B	C	D
LPV DA	5691-3/4 200 (200-3/4)			
LNAV/VNAV DA	5916-1 3/8 425 (500-1 3/8)			
LNAV MDA	6000-1	509 (500-1)	6000-1 1/2	509 (500-1 1/2)
CIRCLING	6000-1	485 (500-1)	6100-1 1/2 585 (600-1 1/2)	6300-2 1/2 785 (800-2 1/2)

DENVER, COLORADO  
Amdt 1D 11AUG22

39°47'N-104°32'W

## COLORADO AIR AND SPACE PORT (CFO) RNAV (GPS) RWY 17

SW-1, 07 AUG 2025 to 04 SEP 2025

SW-1, 07 AUG 2025 to 04 SEP 2025