

DENVER, COLORADO

AL-6851 (FAA)

23334

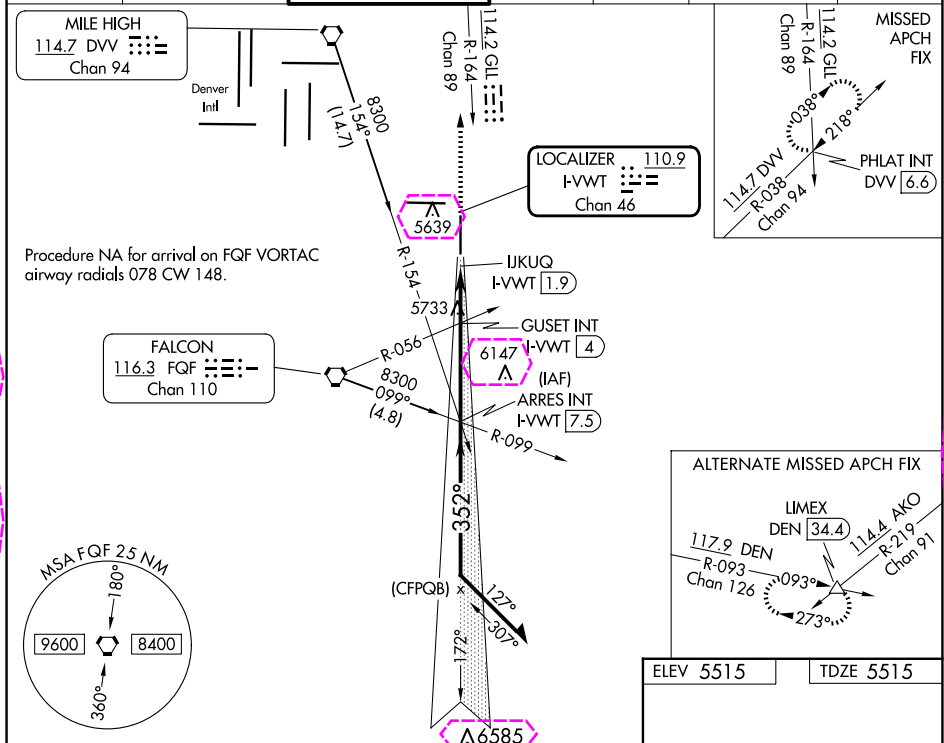
LOC/DME I-VWT 110.9 Chan 46	APP CRS 352°	Rwy Idg 8000 TDZE 5515 Apt Elev 5515
---	------------------------	---

ILS or LOC RWY 35

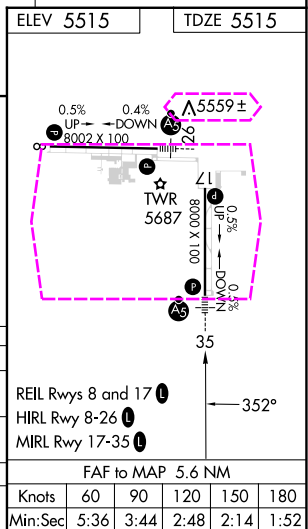
COLORADO AIR AND SPACE PORT (CFO)

⚠ For inop ALS, increase S-LOC 35 Cats C and D visibility to 2½ SM.	MALSR 	MISSED APPROACH: Climb to 7500 on heading 352° and on GLL VOR/DME R-164 to PHLAT INT/DVV 6.6 DME and hold.
--	------------------	---

ATIS 119.025	DENVER APP CON 128.25 371.95	SPACE PORT TOWER * 120.2 (CTAF) 1	GND CON 124.7	CLNC DEL 124.7	CLNC DEL 121.75 (When twr closed)	UNICOM 122.95
-------------------------------	---	---	--------------------------------	---------------------------------	---	--------------------------------



7500 hdg 352°	GLL R-164	PHLAT INT	ARRES INT I-VWT 7.5	7500	7900	Remain within 10 NM
*LOC only			Guset INT I-VWT 4			
			IJKUQ I-VWT 1.9			
				6300*		GS 3.00° TCH 54
	0.5	1 NM	1 NM	3.6 NM		
CATEGORY	A	B	C	D		
S-ILS 35	5715-½ 200 (200-½)					
S-LOC 35	6300-½ 785 (800-½)	6300-¾ 785 (800-¾)	6300-1¾ 785 (800-1¾)			
Guset FIX MINIMUMS (DUAL VOR RECEIVERS OR DME REQUIRED)						
S-LOC 35	6040-½ 525 (600-½)		6040-1 525 (600-1)			



DENVER, COLORADO
Amdt 2B 30JAN20

39°47'N-104°32'W

ILS or LOC RWY 35

FAF to MAP 5.6 NM					
Knots	60	90	120	150	180
Min:Sec	5:36	3:44	2:48	2:14	1:52

SW-1, 10 JUL 2025 to 07 AUG 2025

SW-1, 10 JUL 2025 to 07 AUG 2025

