

DENVER, COLORADO

AL-6851 (FAA)

23334

LOC/DME I-FTG 109.3 Chan 30	APP CRS 263°	Rwy Idg TDZE 5489 Apt Elev 5515
---	------------------------	---

ILS or LOC RWY 26

COLORADO AIR AND SPACE PORT (CFO)

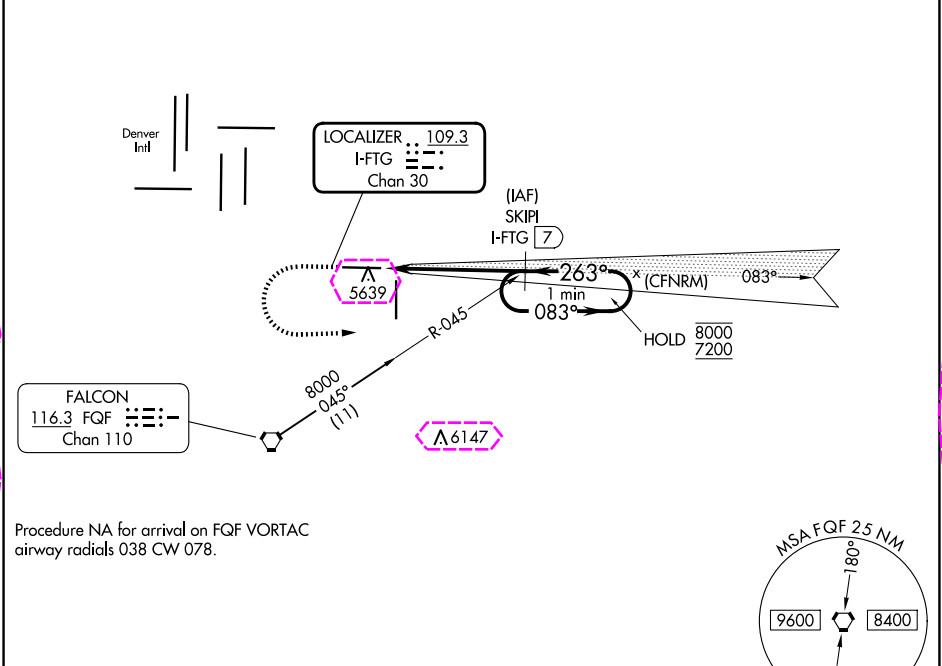
DME required.

▼ For inop ALS, increase S-LOC 26 Cat C/D visibility to 1 1/8 SM. Autopilot coupled approach NA below 6250 MSL.

MALSR

MISSED APPROACH: Climb to 6100 then climbing left turn to 7200 on heading 080° and on FQF VORTAC R-045 to SKIPI/I-FTG 7 DME and hold.

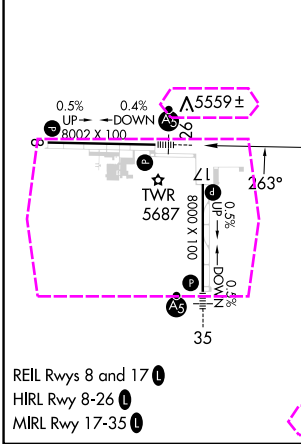
ATIS 119.025	DENVER APP CON 128.25 371.95	SPACE PORT TOWER ★ 120.2 (CTAF)	GND CON 124.7	CLNC DEL 124.7	CLNC DEL 121.75 (When twr closed)	UNICOM 122.95
------------------------	--	---	-------------------------	--------------------------	--	-------------------------



Procedure NA for arrival on FQF VORTAC
airway radials 038 CW 078.

ELEV 5515	TDZE 5489
-----------	-----------

6529



6100	7200	FQF R-045	SKIPI I-FTG 7	SKIPI I-FTG 7	One Minute Holding Pattern
*LOC only					
*I-FTG 2.9					
*I-FTG 1.7					
1.1 NM 4.1 NM					
CATEGORY	A	B	C	D	
S-ILS 26	5689-1/2 200 (200-1/2)				
S-LOC 26	5900-1/2 411 (400-1/2)		5900-3/4 411 (400-3/4)		
CIRCLING	6000-1 485 (500-1)		6100-1 1/2 585 (600-1 1/2)		6300-2 1/2 785 (800-2 1/2)

DENVER, COLORADO
Amdt 6B 31DEC20

39°47'N-104°32'W

COLORADO AIR AND SPACE PORT (CFO)
ILS or LOC RWY 26

SW-1, 10 JUL 2025 to 07 AUG 2025

SW-1, 10 JUL 2025 to 07 AUG 2025

DENVER, COLORADO

AL-6851 (FAA)

25219

LOC/DME I-FTG 109.3 Chan 30	APP CRS 263°	Rwy Ldg TDZE 5489 Apt Elev 5515
---	------------------------	---

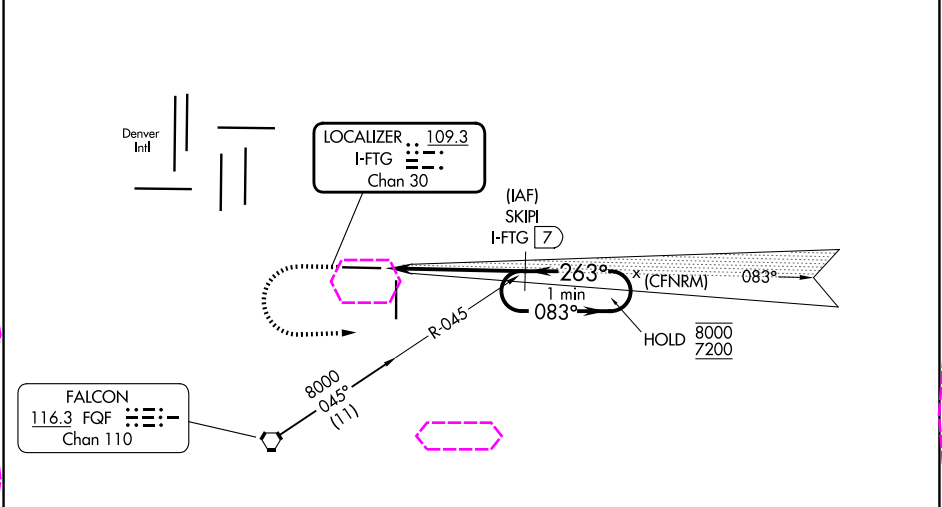
ILS or LOC RWY 26
COLORADO AIR AND SPACE PORT (CFO)

DME required.
▼ For inop ALS, increase S-LOC 26 Cat C/D visibility to 1 1/8 SM. Autopilot coupled approach NA below 6250 MSL.

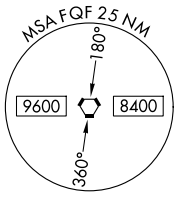
MALSR
AG

MISSED APPROACH: Climb to 6100 then climbing left turn to 7200 on heading 080° and on FQF VORTAC R-045 to SKIPI/I-FTG 7 DME and hold.

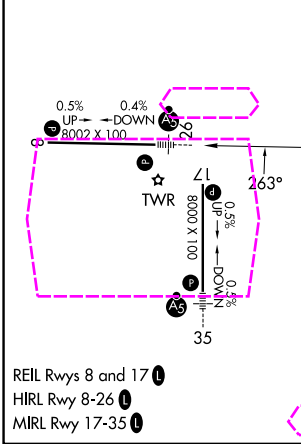
ATIS 119.025	DENVER APP CON 128.25 371.95	SPACE PORT TOWER ★ 120.2 (CTAF)	GND CON 124.7	CLNC DEL 124.7	CLNC DEL 121.75 (When twr closed)	UNICOM 122.95
------------------------	--	---	-------------------------	--------------------------	--	-------------------------



Procedure NA for arrival on FQF VORTAC
airway radials 038 CW 078.



ELEV 5515	TDZE 5489
------------------	------------------



6100 ↑ hdg 080°	7200 R-045	FQF R-045	SKIPI I-FTG 7	SKIPI I-FTG 7	One Minute Holding Pattern
*LOC only					
*I-FTG 2.9					
I-FTG 1.7					
1.1 NM 4.1 NM					
CATEGORY	A	B	C	D	
S-ILS 26	5689-1/2 200 (200-1/2)				
S-LOC 26	5900-1/2 411 (400-1/2)		5900-3/4 411 (400-3/4)		
CIRCLING	6000-1 485 (500-1)		6100-1 1/2 585 (600-1 1/2)		6300-2 1/2 785 (800-2 1/2)

DENVER, COLORADO
Amdt 6B 31DEC20

39°47'N-104°32'W

COLORADO AIR AND SPACE PORT (CFO)
ILS or LOC RWY 26

SW-1, 07 AUG 2025 to 04 SEP 2025

SW-1, 07 AUG 2025 to 04 SEP 2025