

TINIAN ISLAND, CQ

AL-6848 (FAA)

24025

APP CRS **078°**
 Rwy Idg **8600**
 TDZE **243**
 Apt Elev **270**

RNAV (GPS) RWY 8

FRANCISCO MANGLONA BORJA/TINIAN INTL (TNI)(PGWT)

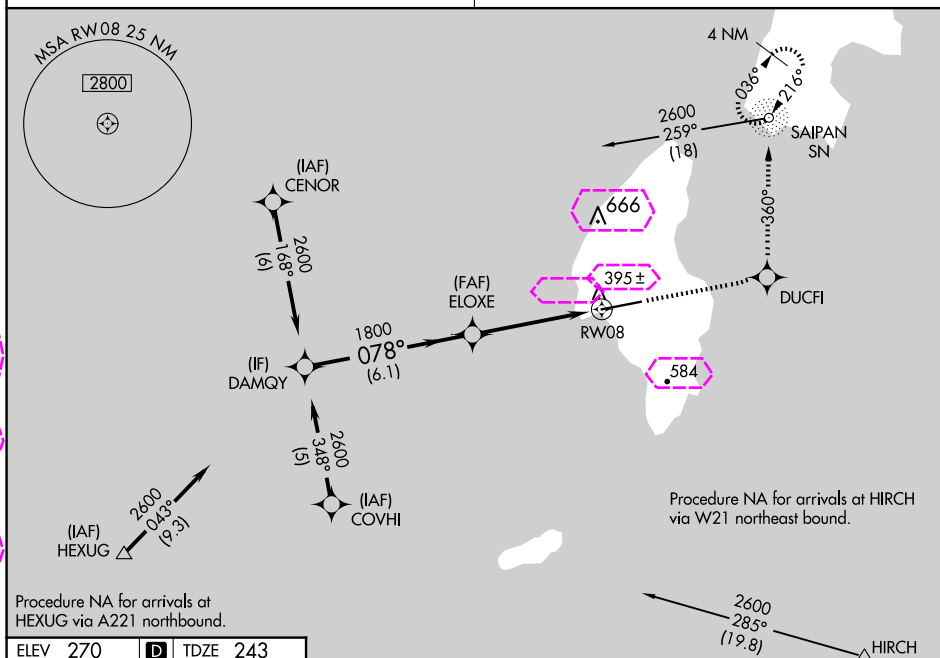
RNP APCH.

Obtain local altimeter setting on CTAF; when not received, use Saipan altimeter setting.
 VDP NA when using Saipan altimeter setting.

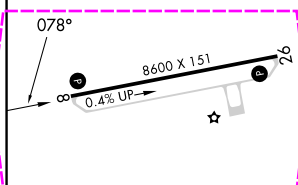
MISSED APPROACH: Climb to 2800 direct DUCFI and via 360° track to SN NDB and hold, continue climb-in-hold to 2800.

GUAM CERAP
118.4 290.5

SAIPAN RADIO
123.6 (CTAF)



ELEV 270 **D** TDZE 243



	DAMQY	ELOXE	2800	DUCFI	360° tr	SN
	2600	1800				
	078°					
	6.1 NM	3.5 NM	1.2			
	Procedure Turn NA					
CATEGORY	A	B	C	D		
LNAV MDA	660-1	417 (400-1)	660-1¼	417 (400-1¼)		
CIRCLING	760-1	860-1	1000-2	1060-2½		
	490 (500-1)	590 (600-1)	730 (800-2)	790 (800-2½)		
SAIPAN ALTIMETER SETTING MINIMUMS						
LNAV MDA	680-1	437 (500-1)	680-1¼	680-1½		
			437 (500-1¼)	437 (500-1½)		
CIRCLING	800-1	900-1	1040-2¼	1100-2¾		
	530 (600-1)	630 (700-1)	770 (800-2¼)	830 (900-2¾)		

MIRL Rwy 8-26

REIL Rwys 8 and 26

TINIAN ISLAND, CQ

FRANCISCO MANGLONA BORJA/TINIAN INTL (TNI)(PGWT)

Amdt 1A 26MAR20

15°00'N-145°37'E

RNAV (GPS) RWY 8

PAC, 12 JUN 2025 to 07 AUG 2025

PAC, 12 JUN 2025 to 07 AUG 2025

TINIAN ISLAND, MP

AL-6848 (FAA)

25219

APP CRS
078°

Rwy Ldg **8600**
TDZE **243**
Apt Elev **270**

RNAV (GPS) RWY 8

FRANCISCO MANGLONA BORJA/TINIAN INTL (TNI)(PGWT)

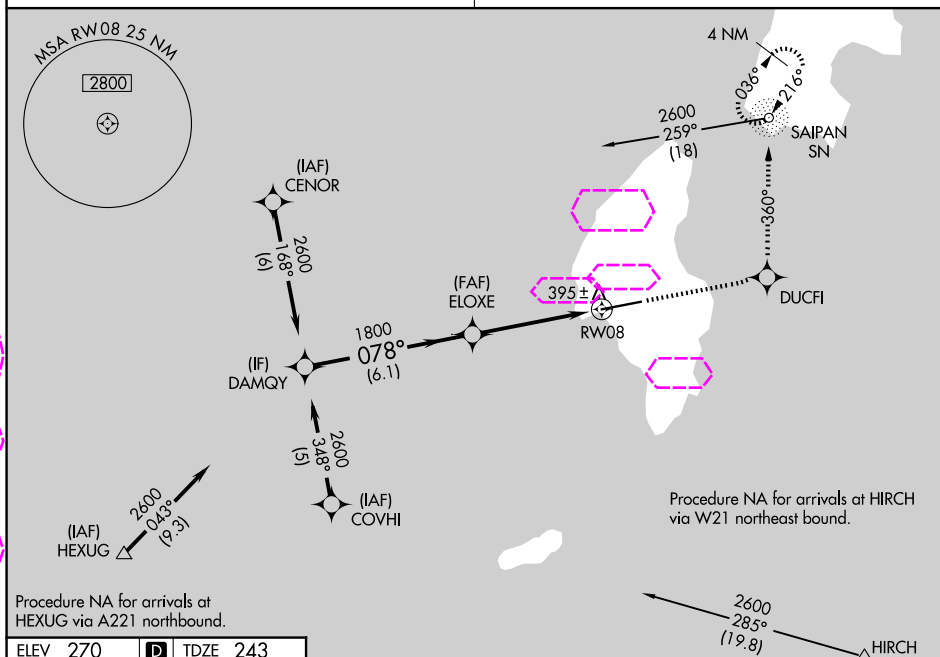
RNP APCH.

Obtain local altimeter setting on CTAF; when not received, use Saipan altimeter setting.
VDP NA when using Saipan altimeter setting.

MISSED APPROACH: Climb to 2800 direct DUCFI and via 360° track to SN NDB and hold, continue climb-in-hold to 2800.

GUAM CERAP
118.4 290.5

SAIPAN RADIO
123.6 (CTAF)



ELEV 270 **D** TDZE 243

CATEGORY	A	B	C	D
LNAV MDA	660-1	417 (400-1)	660-1½	417 (400-1½)
CIRCLING	760-1 490 (500-1)	860-1 590 (600-1)	1000-2 730 (800-2)	1060-2½ 790 (800-2½)
SAIPAN ALTIMETER SETTING MINIMUMS				
LNAV MDA	680-1	437 (500-1)	680-1¼	437 (500-1¼)
CIRCLING	800-1 530 (600-1)	900-1 630 (700-1)	1040-2¼ 770 (800-2¼)	1100-2¾ 830 (900-2¾)

MIRL Rwy 8-26
REIL Rws 8 and 26

TINIAN ISLAND, MP

FRANCISCO MANGLONA BORJA/TINIAN INTL (TNI)(PGWT)

Amdt 1A 26MAR20

15°00'N-145°37'E

RNAV (GPS) RWY 8

PAC, 07 AUG 2025 to 02 OCT 2025

PAC, 07 AUG 2025 to 02 OCT 2025