

TINIAN ISLAND, CQ

AL-6848 (FAA)

24025

RNAV (GPS) RWY 26

FRANCISCO MANGLONA BORJA/TINIAN INTL (TNI)(PGWT)

APP CRS	Rwy Idg	8600
258°	TDZE	270
	Apt Elev	270

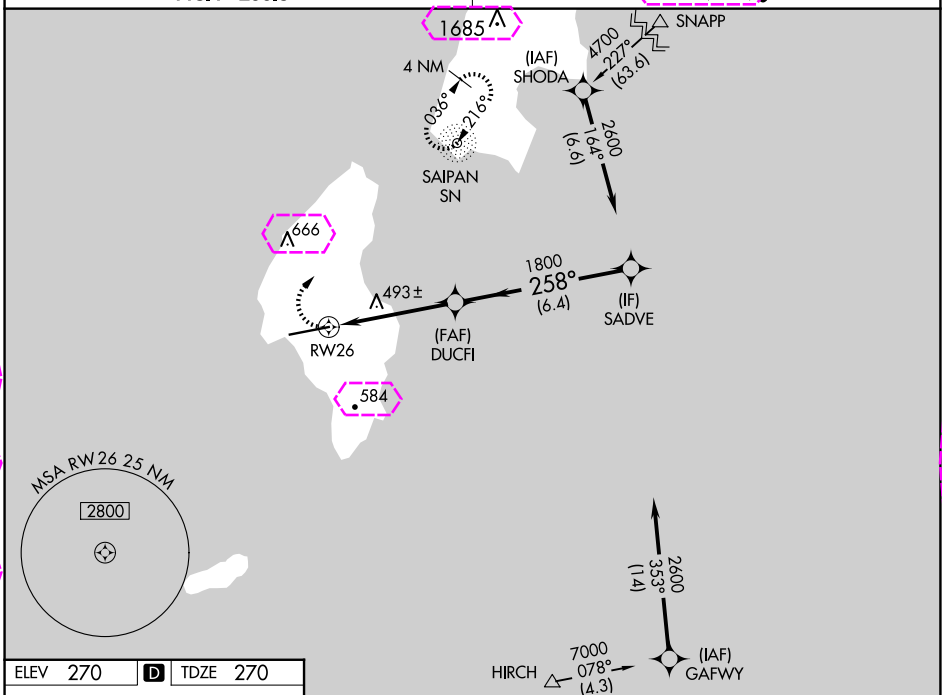
RNP APCH.

T Obtain local altimeter setting on CTAF; when not received, use Saipan
A altimeter setting. VDP NA when using Saipan altimeter setting.

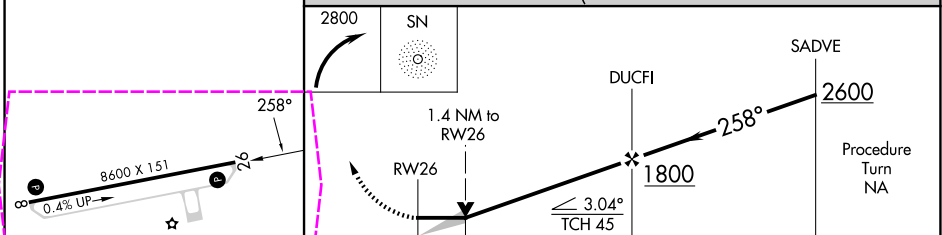
MISSED APPROACH: Climbing right turn to 2800 direct SN NDB and hold, continue climb-in-hold to 2800



GUAM CERAP
118.4 290.5

SAIPAN RADIO
123.6 (CTAF) 



ELEV 270	D	TDZE 270
----------	----------	----------



	1.4	3.2 NM	6.4 NM	
CATEGORY	A	B	C	D
INAV MDA	760-1	490 (500-1)	760-1¼ 490 (500-1¼)	760-1½ 490 (500-1½)
 CIRCLING	760-1 490 (500-1)	860-1 590 (600-1)	1000-2 730 (800-2)	1060-2½ 790 (800-2½)
SAIPAN ALTITUDE SETTING MINIMUMS				
INAV MDA	780-1	510 (600-1)	780-1½	510 (600-1½)
 CIRCLING	800-1 530 (600-1)	900-1 630 (700-1)	1040-2¼ 770 (800-2¼)	1100-2¾ 830 (900-2¾)

TINIAN ISLAND, CQ

FRANCISCO MANGLONA BORJA/TINIAN INTL (TNI)(PGWT)

15° 00'N-145° 37'E

RNAV (GPS) RWY 26

PAC, 12 JUN 2025 to 07 AUG 2025

PAC, 12 JUN 2025 to 07 AUG 2025

TINIAN ISLAND, MP

AL-6848 (FAA)

25219

APP CRS
258°

Rwy Ldg **8600**
TDZE **270**
Apt Elev **270**

RNAV (GPS) RWY 26

FRANCISCO MANGLONA BORJA/TINIAN INTL (TNI)(PGWT)

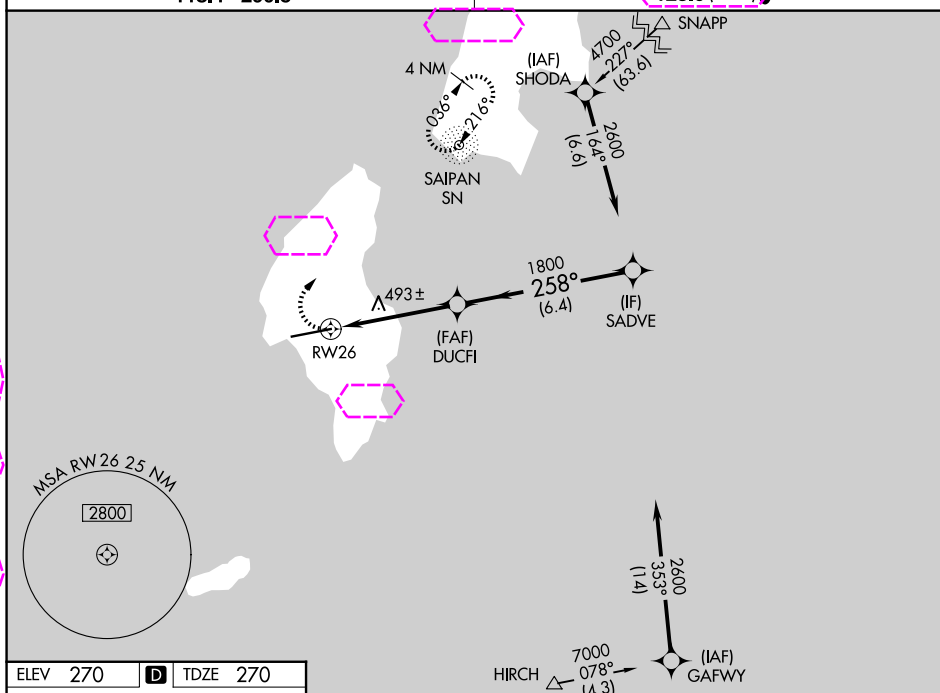
RNP APCH.

▼ Obtain local altimeter setting on CTAF; when not received, use Saipan altimeter setting. VDP NA when using Saipan altimeter setting.

MISSED APPROACH: Climbing right turn to 2800 direct SN NDB and hold, continue climb-in-hold to 2800.

GUAM CERAP
118.4 290.5

SAIPAN RADIO
123.6 (CTAF)



ELEV 270 **D** TDZE 270

Diagram illustrating the approach path. The path is a straight line with a heading of 258°. An obstacle is marked at 8600 X 151. The slope is indicated as 0.4% UP. A star symbol is located near the bottom of the path.

CATEGORY	A	B	C	D
RNAV MDA	760-1 490 (500-1)	760-1 490 (500-1)	760-1¼ 490 (500-1¼)	760-1½ 490 (500-1½)
CIRCLING	760-1 490 (500-1)	860-1 590 (600-1)	1000-2 730 (800-2)	1060-2½ 790 (800-2½)
SAIPAN ALTIMETER SETTING MINIMUMS				
RNAV MDA	780-1 510 (600-1)	780-1 510 (600-1)	780-1½ 510 (600-1½)	780-1½ 510 (600-1½)
CIRCLING	800-1 530 (600-1)	900-1 630 (700-1)	1040-2¼ 770 (800-2¼)	1100-2¾ 830 (900-2¾)

MIRL Rwy 8-26
REIL Rlys 8 and 26

MIRL Rwy 8-26
REIL Rws 8 and 26

TINIAN ISLAND, MP

Amdt 1A 26MAR20

FRANCISCO MANGLONA BORJA/TINIAN INTL (TNI)(PGWT)

15° 00'N-145° 37'E

RNAV (GPS) RWY 26

PAC, 07 AUG 2025 to 02 OCT 2025

PAC, 07 AUG 2025 to 02 OCT 2025