

TINIAN ISLAND, CQ

AL-6848 (FAA)

24025

SN NDB 312	APP CRS 216°	Rwy Idg TDZE Apt Elev	N/A N/A 270
----------------------	------------------------	-----------------------------	--------------------------

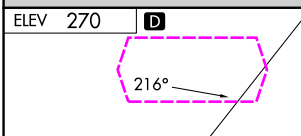
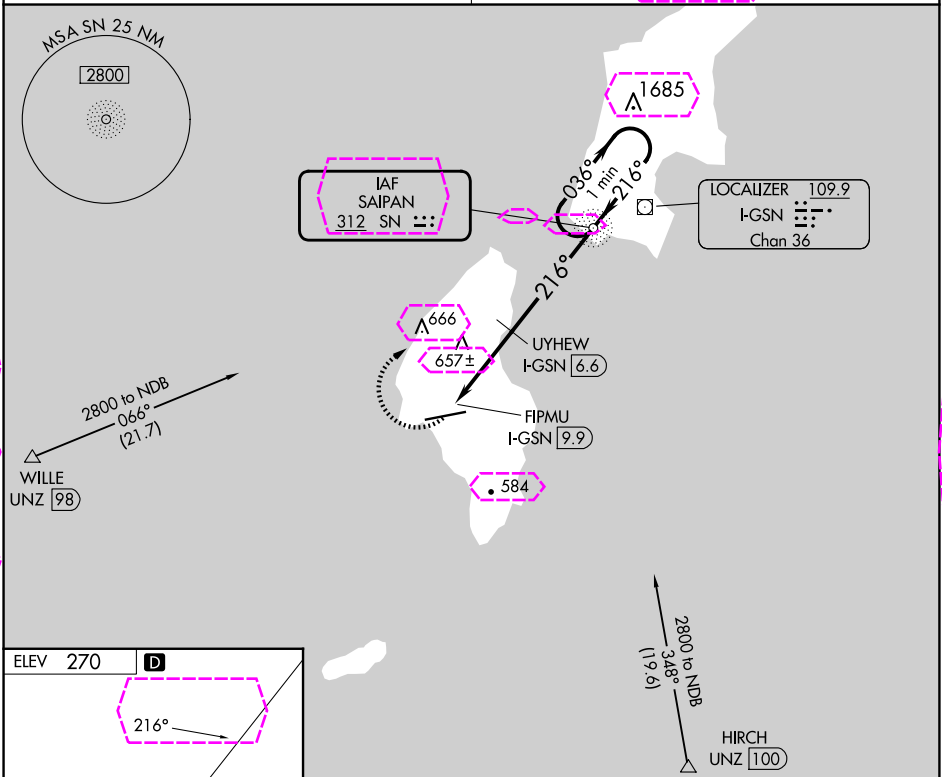
NDB-A

FRANCISCO MANGLONA BORJA/TINIAN INTL (TNI)(PGWT)

Obtain local altimeter setting on CTAF; when not received, use Saipan altimeter setting and increase all MDA 40 feet, and all Cats visibility ¼ SM. Increase UYHEW fix minimums Cats C and D visibility ¼ mile. # DME from I-GSN LOC/DME.

MISSED APPROACH: Climbing right turn to 2800 direct SN NDB and hold.

GUAM CERAP 118.4 290.5	SAIPAN RADIO 123.6 (CTAF)
----------------------------------	-------------------------------------



MIRL Rwy 8-26 REIL Rwys 8 and 26			
FAF to MAP 8 NM			
Knots	60	90	120 150 180
Min:Sec	8:00	5:20	4:00 3:12 2:40
CATEGORY	A	B	C D
CIRCLING	1060-1	790 (800-1)	1060-2¼ 790 (800-2¼) 1060-2½ 790 (800-2½)
# UYHEW FIX MINIMUMS			
CIRCLING	1000-1	730 (800-1)	1000-2 730 (800-2) 1060-2½ 790 (800-2½)

TINIAN ISLAND, CQ
Amdt 3A 20JUN19

FRANCISCO MANGLONA BORJA/TINIAN INTL (TNI)(PGWT)
15°00'N-145°37'E

NDB-A

PAC, 12 JUN 2025 to 07 AUG 2025

PAC, 12 JUN 2025 to 07 AUG 2025

TINIAN ISLAND, MP

AL-6848 (FAA)

25219

SN NDB 312	APP CRS 216°	Rwy Ldg TDZE Apt Elev	N/A N/A 270
----------------------	------------------------	-----------------------------	--------------------------

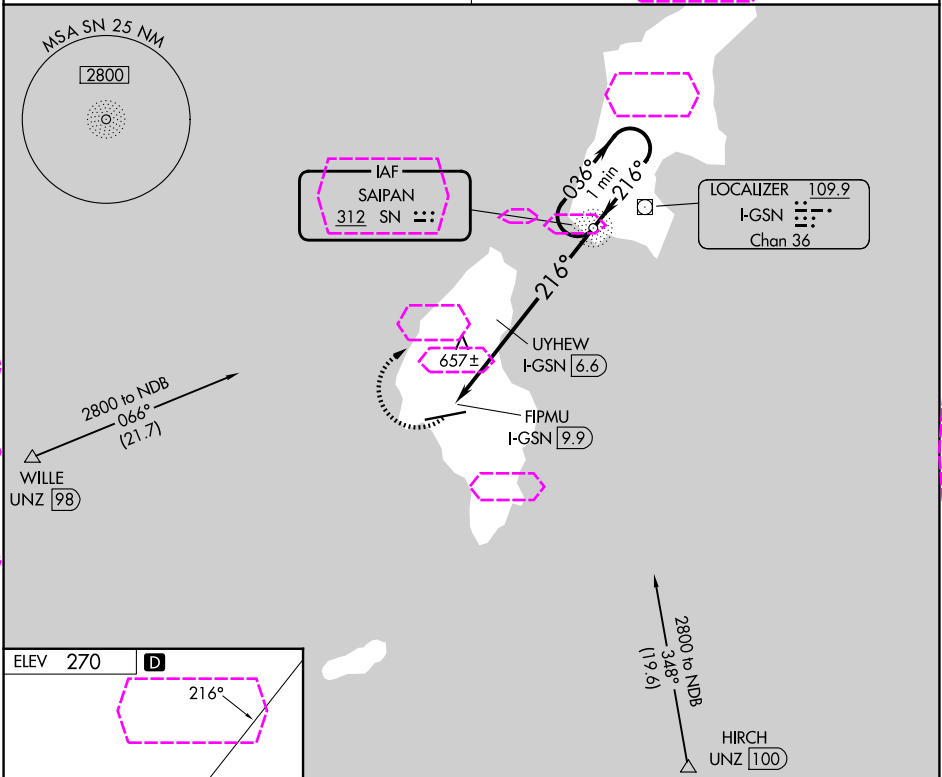
NDB-A

FRANCISCO MANGLONA BORJA/TINIAN INTL (TNI)(PGWT)

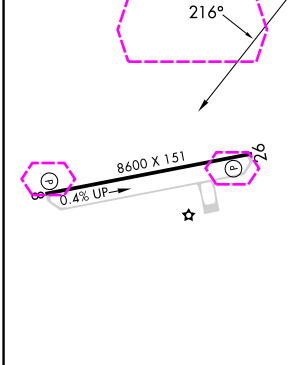
⚠ NA Obtain local altimeter setting on CTAF; when not received, use Saipan altimeter setting and increase all MDA 40 feet, and all Cats visibility ¼ SM. Increase UYHEW fix minimums Cats C and D visibility ¼ mile. # DME from I-GSN LOC/DME.

MISSED APPROACH: Climbing right turn to 2800 direct SN NDB and hold.


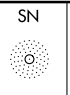

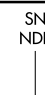
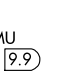
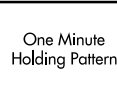

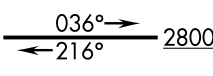


GUAM CERAP 118.4 290.5	SAIPAN RADIO 123.6 (CTAF)
----------------------------------	-------------------------------------



ELEV 270	D
----------	----------



MIRL Rwy 8-26	REIL Rwy 8 and 26
FAF to MAP 8 NM	
Knots	60 90 120 150 180
Min:Sec	8:00 5:20 4:00 3:12 2:40

					
					
					
					
					
CATEGORY		A	B	C	D
CIRCLING	1060-1	790 (800-1)	1060-2¼ 790 (800-2¼)	1060-2½ 790 (800-2½)	
# UYHEW FIX MINIMUMS					
CIRCLING	1000-1	730 (800-1)	1000-2 730 (800-2)	1060-2½ 790 (800-2½)	

TINIAN ISLAND, MP
Amdt 3A 20JUN19

FRANCISCO MANGLONA BORJA/TINIAN INTL (TNI)(PGWT)
15°00'N-145°37'E

NDB-A

PAC, 07 AUG 2025 to 02 OCT 2025

PAC, 07 AUG 2025 to 02 OCT 2025