

CAMDENTON, MISSOURI

AL-6794 (FAA)

22363

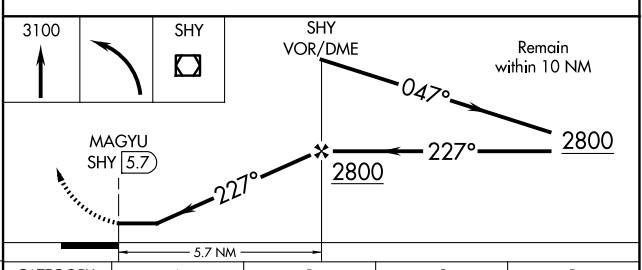
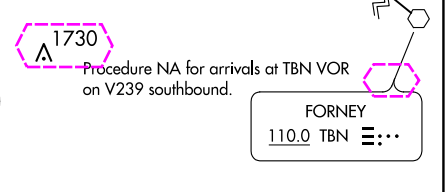
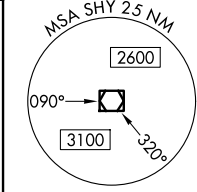
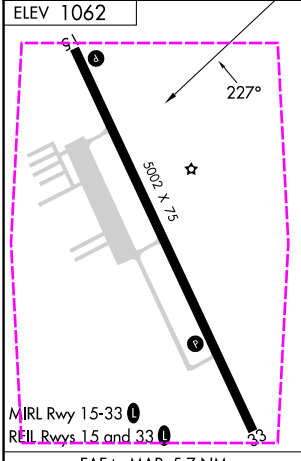
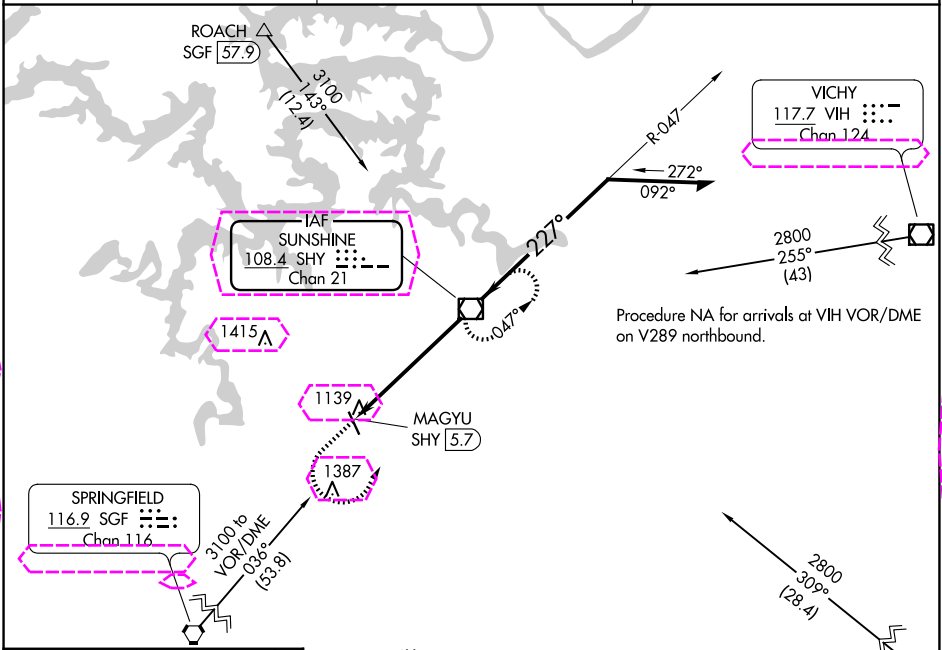
VOR/DME SHY	APP CRS	Rwy Idg	N/A
108.4	227°	TDZE	N/A
Chan 21		Apt Elev	1062

VOR-A

CAMDENTON MEML-LAKE RGNL (OZS)

<p>▼</p> <p>▲ NA</p>	MISSED APPROACH: Climb to 3100 then left turn direct SHY VOR/DME and hold.
----------------------	--

AWOS-3PT 120.225	MIZZU APP CON 124.1 353.925	UNICOM 122.8 (CTAF) 0
---------------------	--------------------------------	--------------------------



FAF to MAP 5.7 NM					CATEGORY	A	B	C	D
Knots	60	90	120	150	180	1520-1	458 (500-1)	1700-1¾ 638 (700-1¾)	NA
Min:Sec	5:42	3:48	2:51	2:17	1:54				

CAMDENTON, MISSOURI

Amdt 7 19MAY22

CAMDENTON MEML-LAKE RGNL (OZS)

37°58'N-92°41'W

VOR-A

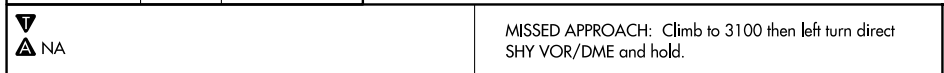
NC-3, 10 JUL 2025 to 07 AUG 2025

NC-3, 10 JUL 2025 to 07 AUG 2025

VOR/DME SHY 108.4 Chan 21	APP CRS 227°	Rwy Ldg TDZE Apt Elev 1062	N/A N/A 1062
---	------------------------	---	---

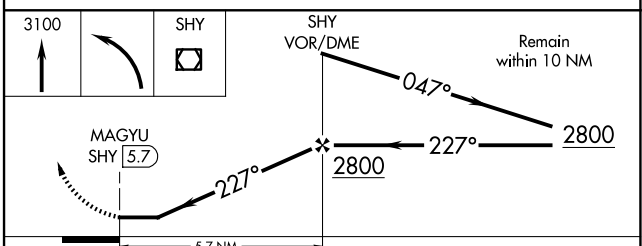
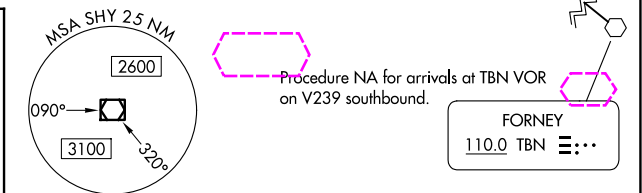
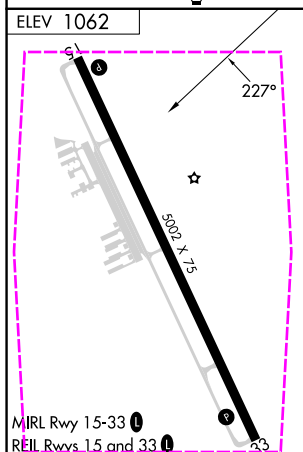
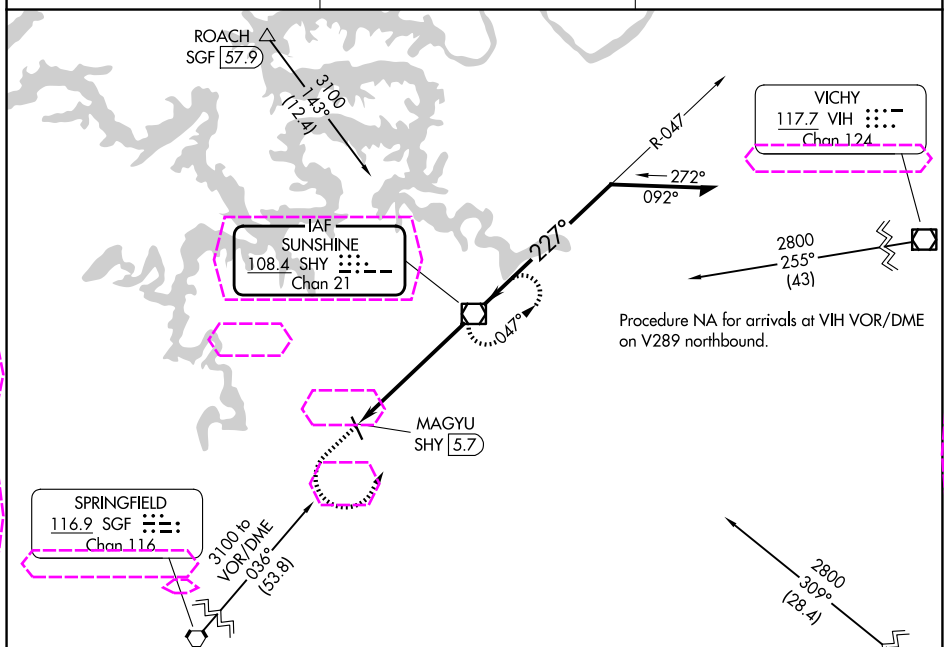
VOR-A

CAMDENTON MEML-LAKE RGNL (OZS)



AWOS-3PT
120.225

MIZZU APP CON
124.1 353.925

UNICOM
122.8 (CTAF) **L**

FAF to MAP 5.7 NM						CATEGORY	A		B		C	D
Knots	60	90	120	150	180	CIRCLING	1520-1		458 (500-1)		1700-1 $\frac{3}{4}$	NA
Min:Sec	5:42	3:48	2:51	2:17	1:54						638 (700-1 $\frac{3}{4}$)	

CAMDENTON, MISSOURI
Amdt 7 19MAY22

CAMDENTON MEML-LAKE RGNL (OZS)
VOR-A

37°58'N-92°41'W