

CAMDENTON, MISSOURI

AL-6794 (FAA)

22363

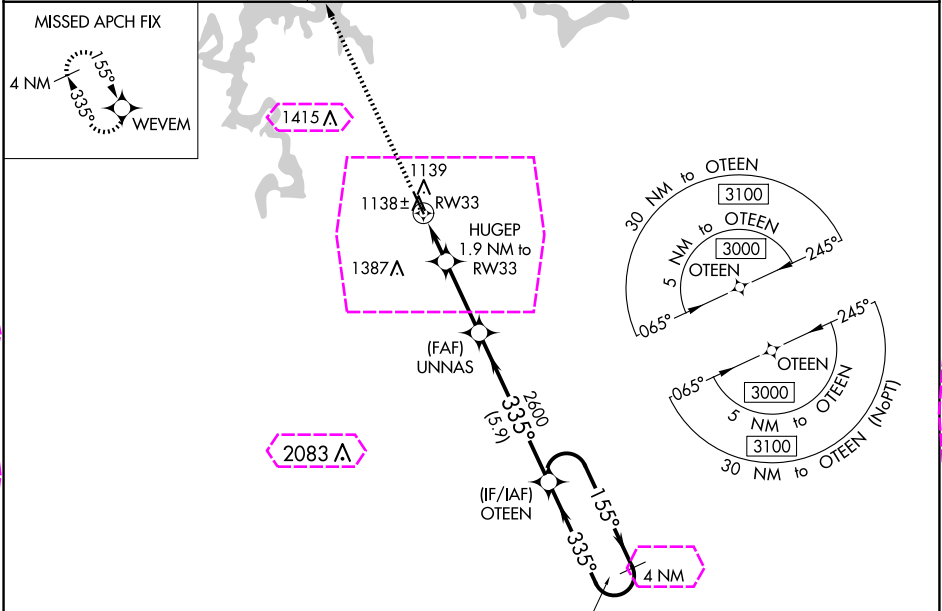
WAAS CH 97419 W33A	APP CRS 335°	Rwy Idg TDZE Apt Elev	5002 1062 1062
--	------------------------	-----------------------------	---

RNAV (GPS) RWY 33

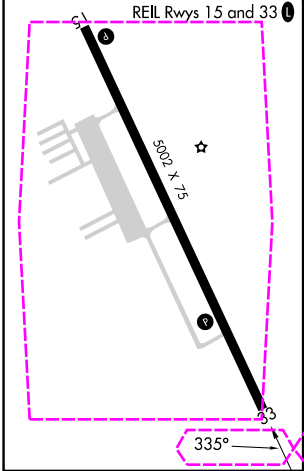
CAMDENTON MEML-LAKE RGNL (OZS)

RNP APCH - GPS.	MISSED APPROACH: Climb to 3000 direct WEVEM and hold.
-----------------	---

AWOS-3PT 120,225	MIZZU APP CON 124.1 353.925	UNICOM 122.8 (CTAF) 0
----------------------------	---------------------------------------	---------------------------------



ELEV 1062	TDZE 1062
-----------	-----------



3000	WEVEM	UNNAS	OTEEN	4 NM Holding Pattern
HUGEP	1.9 NM to RW33	2600	155°	6000
1 NM to RW33	1700	335°	335°	3000
1 NM	0.9	2.8 NM	5.9 NM	GP 3.00° TCH 42
CATEGORY	A	B	C	D
LPV DA	1312-1	250 (300-1)		NA
LNAV/VNAV DA	1312-1	250 (300-1)		NA
LNAV MDA	1400-1	338 (400-1)		NA
CIRCLING	1520-1	458 (500-1)	1700-1¾ 638 (700-1¾)	NA

CAMDENTON, MISSOURI
Amdt 2 19MAY22

37°58'N-92°41'W

CAMDENTON MEML-LAKE RGNL (OZS)
RNAV (GPS) RWY 33

NC-3, 10 JUL 2025 to 07 AUG 2025

NC-3, 10 JUL 2025 to 07 AUG 2025

CAMDENTON, MISSOURI

AL-6794 (FAA)

25219

WAAS CH 97419 W33A	APP CRS 335°	Rwy Ldg TDZE Apt Elev	5002 1062 1062
--	------------------------	-----------------------------	---

RNAV (GPS) RWY 33

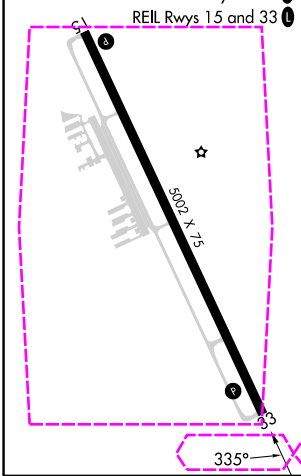
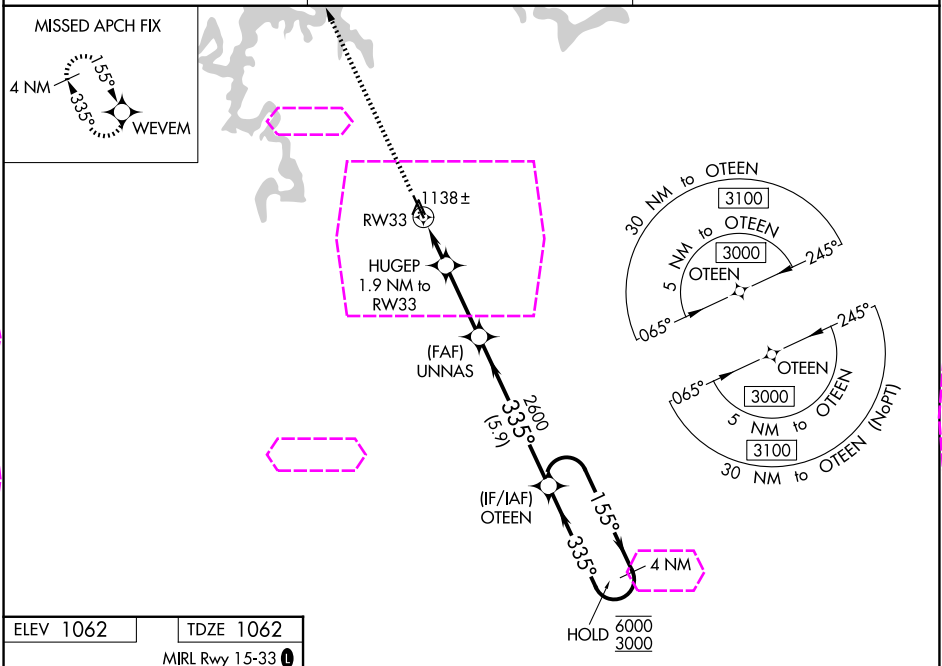
CAMDENTON MEML-LAKE RGNL (OZS)


RNP APCH - GPS.

Rwy 33 helicopter visibility reduction below ¾ SM NA.
For uncompensated Baro-VNAV systems, LNAV/VNAV
NA below -17°C or above 54°C.

MISSED APPROACH: Climb to 3000 direct WEVEM and hold.

AWOS-3PT 120,225	MIZZU APP CON 124.1 353.925	UNICOM 122.8 (CTAF) 0
----------------------------	---------------------------------------	---------------------------------



<div>3000 ↑</div> <div>WEVEM </div>		<div>OTEEN</div> <div>4 NM Holding Pattern</div>		
<div>HUGEP 1.9 NM to RW33</div> <div>UNNAS 2600</div>		<div>155° → 6000 ← 335° 3000</div>		
<div>1 NM to RW33</div> <div>1700</div> <div>2600</div>		<div>GP 3.00° TCH 42</div>		
<div>1 NM</div> <div>0.9</div> <div>2.8 NM</div> <div>5.9 NM</div>				
CATEGORY	A	B	C	D
LPV DA	1312-1 250 (300-1)			NA
LNAV/VNAV DA	1312-1 250 (300-1)			NA
LNAV MDA	1400-1 338 (400-1)			NA
CIRCLING	1520-1 458 (500-1)		1700-1¾ 638 (700-1¾)	NA

NC-3, 07 AUG 2025 to 04 SEP 2025

NC-3, 07 AUG 2025 to 04 SEP 2025