

CAMDENTON, MISSOURI

AL-6794 (FAA)

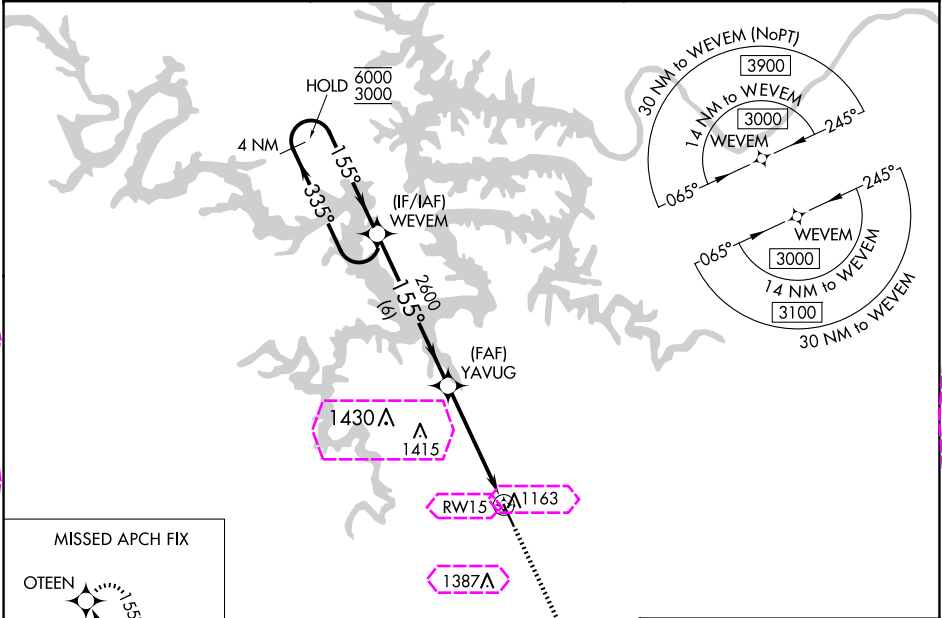
22363

WAAS CH 50219 W15A	APP CRS 155°	Rwy Idg 5002 TDZE 1062 Apt Elev 1062
--	------------------------	---

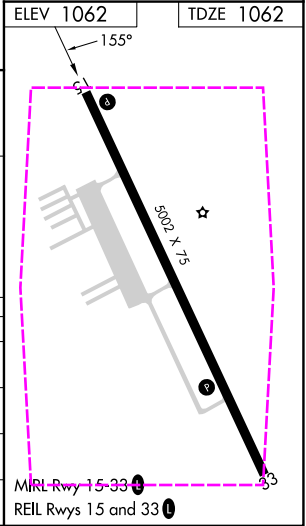
RNAV (GPS) RWY 15
CAMDENTON MEML-LAKE RGNL (OZS)

RNP APCH - GPS.	MISSED APPROACH: Climb to 3000 direct OTEEN and hold.
-----------------	---

AWOS-3PT 120.225	MIZZU APP CON 124.1 353.925	UNICOM 122.8 (CTAF) 0
----------------------------	---------------------------------------	---------------------------------



MISSED APCH FIX		OTEEN	
4 NM Holding Pattern		3000 OTEEN	
6000 ← 335°		155° →	
3000		155°	
GP 3.00°		155°	
TCH 42		155°	
WEVEM		YAVUG	
4 NM		1 NM to RW15	
6000		2600	
3000		2600	
6 NM		3.7 NM	
1 NM		1 NM	
CATEGORY	A	B	D
LPV DA	1312-1	250 (300-1)	NA
LNAV/VNAV DA	1313-1	251 (300-1)	NA
LNAV MDA	1420-1	358 (400-1)	NA
CIRCLING	1520-1	458 (500-1)	NA



CAMDENTON, MISSOURI
Amdt 2 19MAY22

37°58'N-92°41'W

CAMDENTON MEML-LAKE RGNL (OZS)
RNAV (GPS) RWY 15

CAMDENTON, MISSOURI

AL-6794 (FAA)

25219

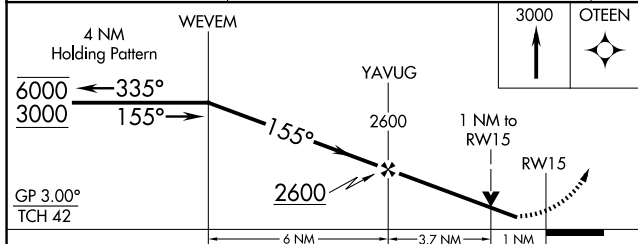
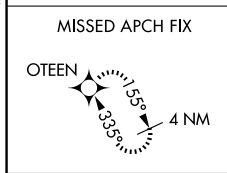
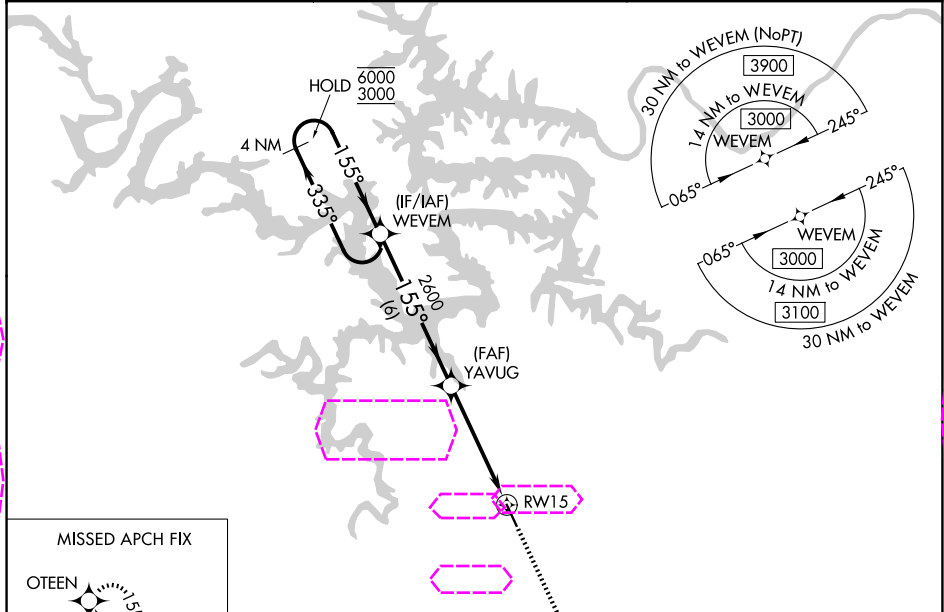
WAAS CH 50219 W15A	APP CRS 155°	Rwy Ldg 5002 TDZE 1062 Apt Elev 1062
--	------------------------	---

RNAV (GPS) RWY 15

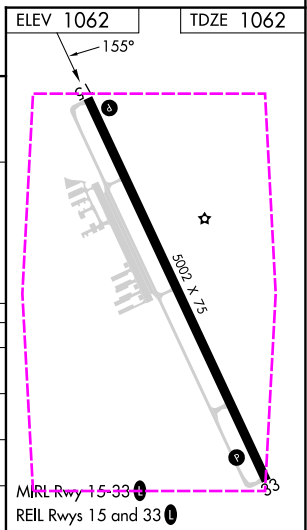
CAMDENTON MEML-LAKE RGNL (OZS)

RNP APCH - GPS.	MISSED APPROACH: Climb to 3000 direct OTEEN and hold.
<div><div>▼</div><div>▲</div></div> Rwy 15 helicopter visibility reduction below ¾ SM NA. For uncompensated Baro-VNAV systems, LNAV/VNAV NA below -17°C or above 54°C.	

AWOS-3PT 120.225	MIZZU APP CON 124.1 353.925	UNICOM 122.8 (CTAF) 0
----------------------------	---------------------------------------	---------------------------------



CATEGORY	A	B	C	D
LPV DA	1312-1	250 (300-1)		NA
LNAV/VNAV DA	1313-1	251 (300-1)		NA
LNAV MDA	1420-1	358 (400-1)		NA
CIRCLING	1520-1	458 (500-1)	1700-1¼ 638 (700-1¼)	NA



CAMDENTON, MISSOURI
Amdt 2 19MAY22

37°58'N-92°41'W

CAMDENTON MEML-LAKE RGNL (OZS)
RNAV (GPS) RWY 15

NC-3, 07 AUG 2025 to 04 SEP 2025

NC-3, 07 AUG 2025 to 04 SEP 2025