

SC-2, 10 JUL 2025 to 07 AUG 2025

CADDO MILLS, TEXAS

AL-6779 (FAA)

25219

APP CRS	Rwy Ldg	4000
355°	TDZE	541
	Apt Elev	542

RNAV (GPS) RWY 36

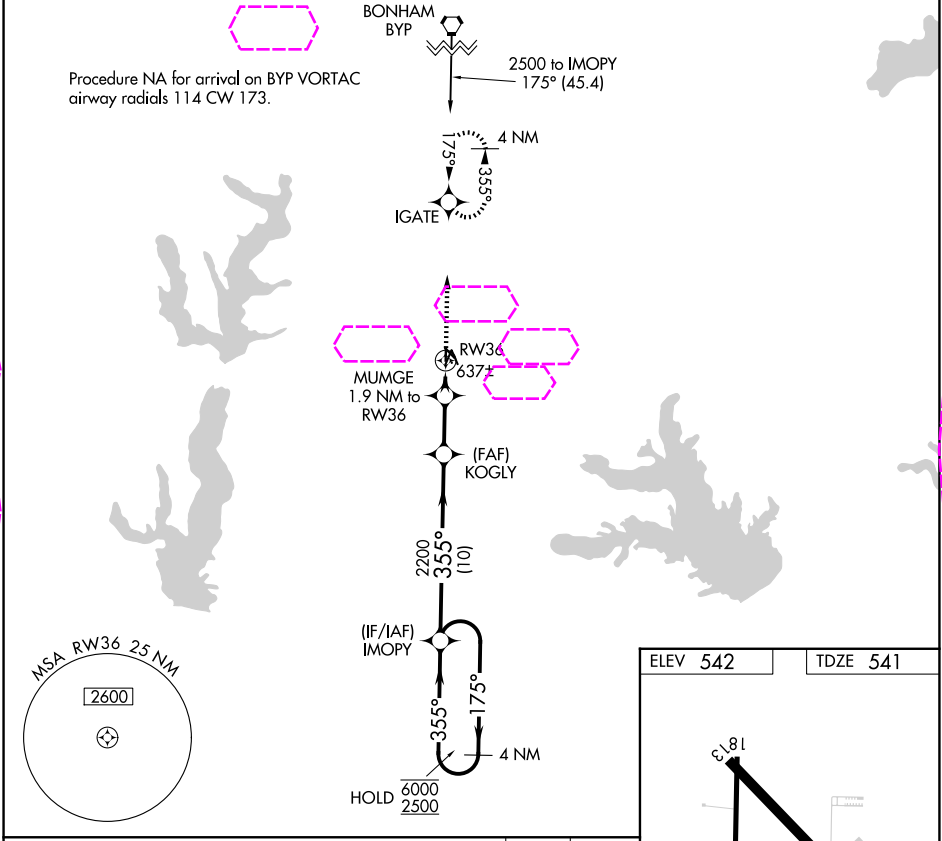
CADDO MILLS MUNI (7F3)

RNP APCH.

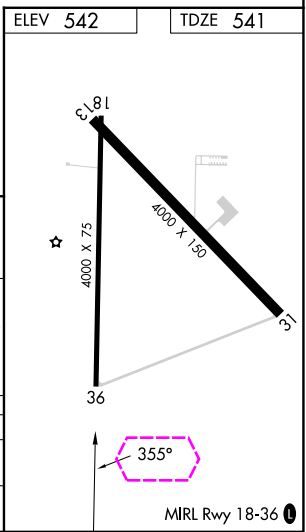
NA Procedure NA at night. Rwy 36 helicopter visibility reduction below 1 SM NA. Use Dallas Love Fld altimeter setting.

MISSED APPROACH: Climb to 2500 direct IGATE and hold.

DAL ASOS	FORT WORTH CENTER	UNICOM
120.15	132.025 317.75	122.8 (CTAF) 0



4 NM Holding Pattern		IMOPY		2500 IGATE	
6000 ← 175°		355° →		355°	
2500		2200		1180	
		10 NM		3.1 NM	
		1.9 NM			
CATEGORY	A	B	C	D	
LNAV MDA	980-1	439 (500-1)	980-1 1/4 439 (500-1 1/4)	NA	
CIRCLING	1060-1 518 (600-1)	1160-1 618 (700-1)	1380-2 1/2 838 (900-2 1/2)	NA	



CADDO MILLS, TEXAS
Amdt 1 30JAN20

33°02'N-96°15'W

RNAV (GPS) RWY 36

CADDO MILLS MUNI (7F3)

SC-2, 07 AUG 2025 to 04 SEP 2025

SC-2, 07 AUG 2025 to 04 SEP 2025