

VOR/DME ULL <b>117.3</b> Chan <b>120</b>	APP CRS <b>229°</b>	Rwy Idg <b>4400</b> TDZE <b>58</b> Apt Elev <b>59</b>
--	------------------------	---

VOR/DME RWY 23  
SAVOONGA (SVA) (PASA)

**A** Circling NA southeast of Rwy 5-23. When local altimeter setting not received, use Gambell altimeter setting and increase all MDAs 100 feet; increase S-23 Cat C/D visibility  $\frac{1}{4}$  SM and Circling Cat C visibility  $\frac{1}{2}$  SM. VDP NA with Gambell altimeter setting.

**MISSED APPROACH:** Climbing right turn to 3300 via heading 090° and via ULL VOR/DME R-059 then left turn via ULL VOR/DME R-059 to ULL VOR/DME and hold.

AWOS-3P <b>121.3</b>	ANCHORAGE CENTER <b>132.2 281.4</b>	NOME RADIO <b>122.3</b>	CTAF <b>122.7</b>
-------------------------	--	----------------------------	----------------------

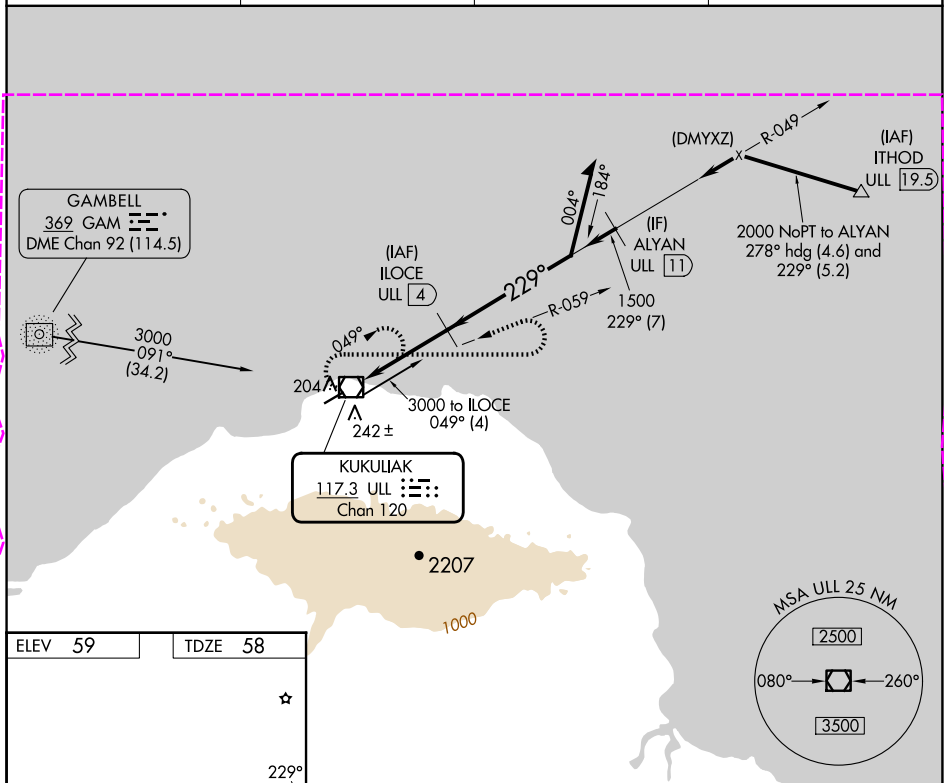


Diagram illustrating a runway layout with dimensions and navigation aids:

- Runway dimensions: 4400 X 100
- Runway orientation: 090°
- Navigation aids: ULL (1.1), ULL (4), VOR/DME, VGSB, and descent angles (0.49°, 2.96°).
- Distances: 0.5 NM, 1.1 NM, 2.9 NM.
- Altitudes: 3000, 1500, 2000.
- Angles: 049°, 229°.
- Note: VGSB and descent angles not coincident (VGSB Angle 3.00/TCH 24).

CATEGORY	A	B	C	D
S-23	600-1 542 (600-1)		600-1½ 542 (600-1½)	600-1¾ 542 (600-1¾)
CIRCLING	600-1 541 (600-1)		780-2 721 (800-2)	1160-3 1101 (1200-3)

MIRL Rwy 5-23

VOR/DME ULL <b>117.3</b> Chan <b>120</b>	APP CRS <b>229°</b>	Rwy Ldg <b>4400</b> TDZE <b>58</b> Apt Elev <b>59</b>
--	------------------------	---

VOR/DME RWY 23  
SAVOONGA (SVA) (PASA)

**T** VDP NA when using GAM/PAGM altimeter setting. Circling NA  
**A** southeast of Rwy 5-23. When local altimeter setting not received, use  
 GAM/PAGM altimeter setting and increase all MDAs 100 feet; increase  
 S-23 Cat C/D visibility  $\frac{1}{4}$  SM and Circling Cat C visibility  $\frac{1}{2}$  SM.

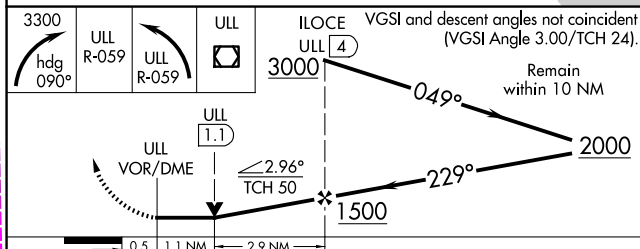
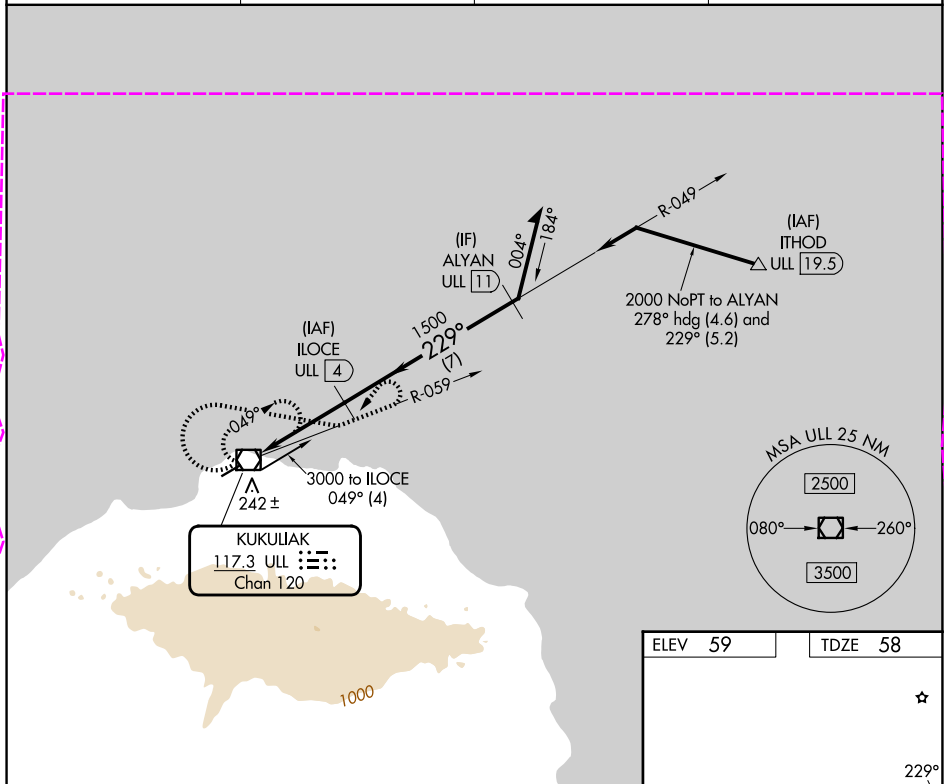
**MISSED APPROACH:** Climbing right turn to 3300 on heading 090° and on ULL VOR/DME R-059 then left turn on ULL VOR/DME R-059 to ULL VOR/DME and hold.

AWOS-3P  
**121.3**

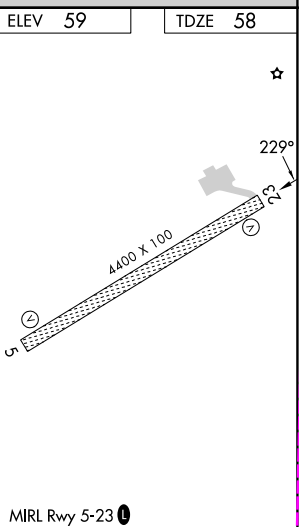
ANCHORAGE CENTER  
132.2 281.4

NOME RADIO  
**122.3**

CTAF  
122.7 **L**



CATEGORY	A	B	C	D
S-23	600-1	542 (600-1)	600-1½ 542 (600-1½)	600-1¾ 542 (600-1¾)
CIRCLING	600-1	541 (600-1)	780-2 721 (800-2)	1160-3 1101 (1200-3)



SAVOONGA, ALASKA  
Amdt 1D 07AUG25

63°41'N-170°30'W

SAVOONGA (SVA)(PASA)  
VOR/DME RWY 23

AK, 07 AUG 2025 to 02 OCT 2025