

SAVOONGA, ALASKA

AL-6772 (FAA)

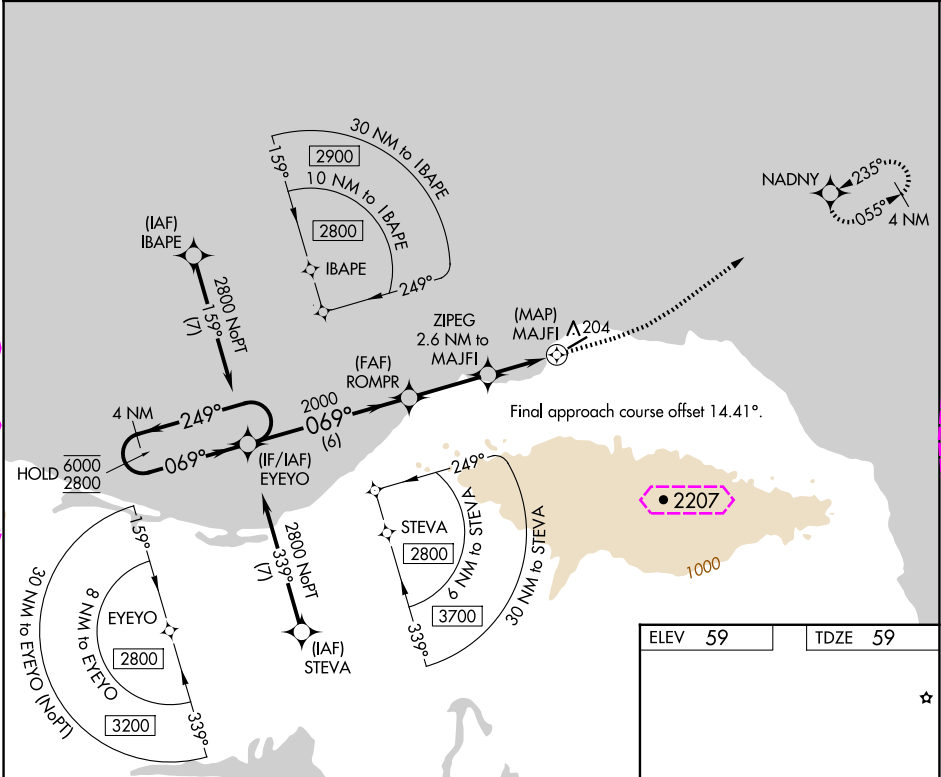
24361

APP CRS	Rwy Idg	4400
069°	TDZE	59
	Apt Elev	59

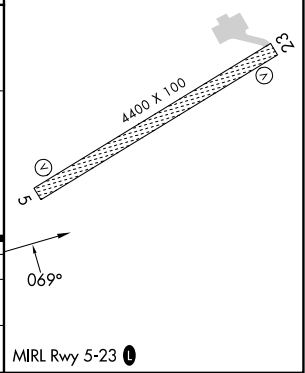
# RNAV (GPS) Y RWY 5

SAVOONGA (SVA) (PASA)

RNP APCH - GPS.		MISSED APPROACH: Climb to 800, then climbing left turn to 2000 direct NADNY and hold.	
Circling NA southeast of Rwy 5-23.			
AWOS-3P 121.3	ANCHORAGE CENTER 132.2 281.4	NOME RADIO 122.3	CTAF 122.7 0



<p>4 NM Holding Pattern</p> <p>EYEYO</p> <p>ROMPR</p> <p>ZIPEG 2.6 NM to MAJFI</p> <p>0.7 NM to MAJFI</p> <p>3.04° TCH 33</p> <p>MAJFI</p> <p>6 NM</p> <p>2.9 NM</p> <p>1.9 NM</p> <p>0.7</p> <p>0.5</p> <table><tr><td>CATEGORY</td><td>A</td><td>B</td><td>C</td><td>D</td></tr><tr><td>LNAV MDA</td><td>460-1</td><td>401 (500-1)</td><td>460-1½</td><td>401 (500-1½)</td></tr><tr><td>CIRCLING</td><td>520-1</td><td>461 (500-1)</td><td>780-2 721 (800-2)</td><td>1100-3 1041 (1100-3)</td></tr></table>					CATEGORY	A	B	C	D	LNAV MDA	460-1	401 (500-1)	460-1½	401 (500-1½)	CIRCLING	520-1	461 (500-1)	780-2 721 (800-2)	1100-3 1041 (1100-3)
CATEGORY	A	B	C	D															
LNAV MDA	460-1	401 (500-1)	460-1½	401 (500-1½)															
CIRCLING	520-1	461 (500-1)	780-2 721 (800-2)	1100-3 1041 (1100-3)															



SAVOONGA, ALASKA  
Orig 11JUL24

63°41'N-170°30'W

# SAVOONGA (SVA) (PASA)

## RNAV (GPS) Y RWY 5

AK, 12 JUN 2025 to 07 AUG 2025

AK, 12 JUN 2025 to 07 AUG 2025

SAVOONGA, ALASKA

AL-6772 (FAA)

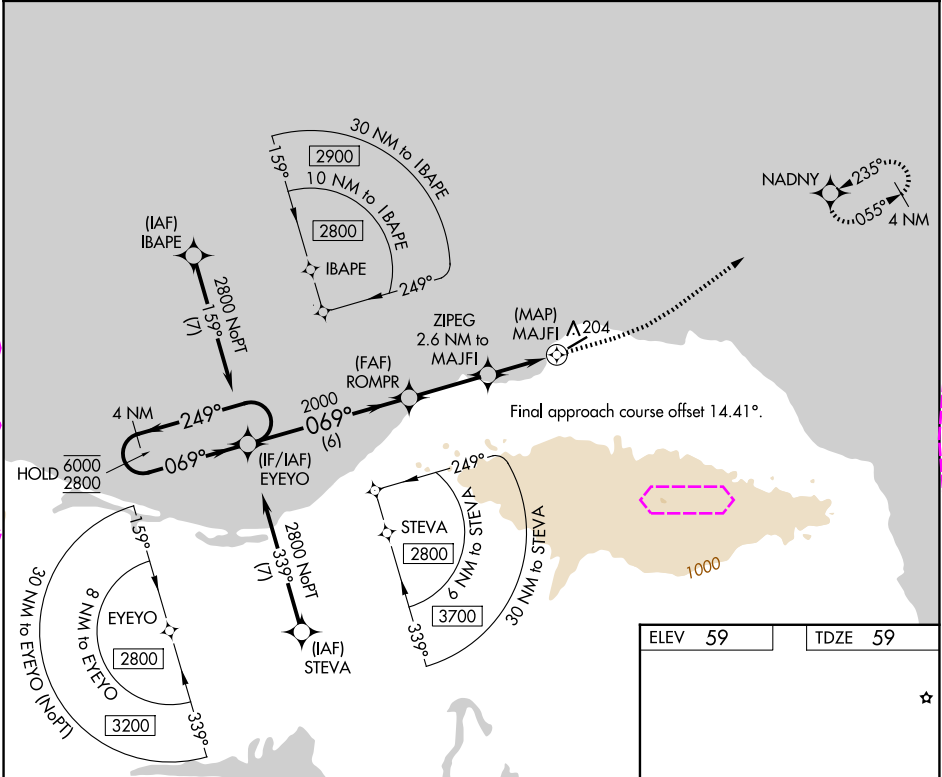
25219

APP CRS	Rwy Ldg	4400
069°	TDZE	59
	Apt Elev	59

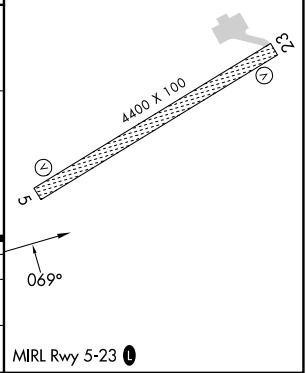
# RNAV (GPS) Y RWY 5

SAVOONGA (SVA) (PASA)

RNP APCH - GPS.		MISSED APPROACH: Climb to 800, then climbing left turn to 2000 direct NADNY and hold.	
Circling NA southeast of Rwy 5-23.			
AWOS-3P 121.3	ANCHORAGE CENTER 132.2 281.4	NOME RADIO 122.3	CTAF 122.7



<div><div>800</div><div>2000</div><div>NADNY</div></div>																																														
<table><tr><td>4 NM Holding Pattern</td><td>EYEYO</td><td>ROMPR</td><td>ZIPEG</td><td>2.6 NM to MAJFI</td><td>0.7 NM to MAJFI</td><td>MAJFI</td></tr><tr><td>6000 ← 249°</td><td></td><td></td><td></td><td></td><td></td><td></td></tr><tr><td>2800 → 069°</td><td></td><td></td><td></td><td></td><td></td><td></td></tr><tr><td></td><td></td><td>2000</td><td></td><td></td><td></td><td></td></tr><tr><td></td><td></td><td></td><td>1080</td><td></td><td></td><td></td></tr><tr><td></td><td>6 NM</td><td>2.9 NM</td><td>1.9 NM</td><td>0.7</td><td>0.5</td><td></td></tr></table>					4 NM Holding Pattern	EYEYO	ROMPR	ZIPEG	2.6 NM to MAJFI	0.7 NM to MAJFI	MAJFI	6000 ← 249°							2800 → 069°									2000								1080					6 NM	2.9 NM	1.9 NM	0.7	0.5	
4 NM Holding Pattern	EYEYO	ROMPR	ZIPEG	2.6 NM to MAJFI	0.7 NM to MAJFI	MAJFI																																								
6000 ← 249°																																														
2800 → 069°																																														
		2000																																												
			1080																																											
	6 NM	2.9 NM	1.9 NM	0.7	0.5																																									
CATEGORY	A	B	C	D																																										
LNAV MDA	460-1	401 (500-1)	460-1½	401 (500-1½)																																										
CIRCLING	520-1	461 (500-1)	780-2 721 (800-2)	1100-3 1041 (1100-3)																																										



SAVOONGA, ALASKA  
Orig 11JUL24

63°41'N-170°30'W

# SAVOONGA (SVA) (PASA) RNAV (GPS) Y RWY 5

AK, 07 AUG 2025 to 02 OCT 2025

AK, 07 AUG 2025 to 02 OCT 2025