

BONHAM, TEXAS

AL-6722 (FAA)

23362

WAAS CH <b>86724</b> <b>W35A</b>	APP CRS <b>356°</b>	Rwy Idg TDZE <b>618</b> Apt Elev <b>618</b>	<b>4000</b>
----------------------------------------	------------------------	---------------------------------------------------	-------------

## RNAV (GPS) RWY 35

JONES FLD (F00)

RNP APCH - GPS.

Baro-VNAV NA. Rwy 35 helicopter visibility reduction below 1 SM NA.  
When local altimeter setting not received, use Durant altimeter setting.

MISSED APPROACH: Climb to  
2500 direct UDOCE and hold.

AWOS-3 PT

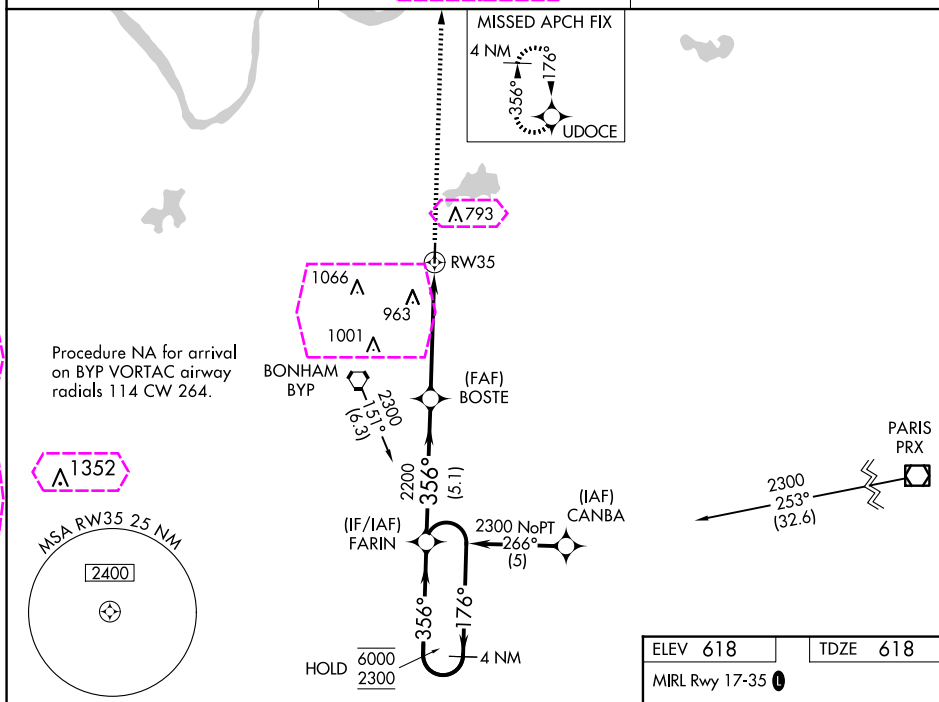
118.05

FORT WORTH CENTER

127.6 254.3

UNICOM

122.8 (CTAF) 0

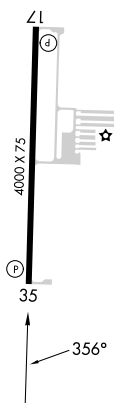


4 NM Holding Pattern		FARIN		2500 UDOCE	
6000 ← 176°		2300 → 356°		2200	
GP 3.00°		TCH 35		RWY35	
5.1 NM		4.9 NM			
CATEGORY	A	B	C	D	
LPV DA	956-1	338 (400-1)	NA		
LNAV/VNAV DA	1314-2	696 (700-2)	NA		
LNAV MDA	1340-1	722 (800-1)	NA		
CIRCLING	1340-1 722 (800-1)	1400-1 782 (800-1)	NA		

ELEV 618

TDZE 618

MIRL Rwy 17-35 0



BONHAM, TEXAS

Amdt 1C 28DEC23

33°37'N-96°11'W

JONES FLD (F00)

RNAV (GPS) RWY 35

BONHAM, TEXAS

AL-6722 (FAA)

25219

WAAS CH <b>86724</b> <b>W35A</b>	APP CRS <b>356°</b>	Rwy Ldg <b>4000</b> TDZE <b>618</b> Apt Elev <b>618</b>
----------------------------------------	------------------------	---------------------------------------------------------------

## RNAV (GPS) RWY 35

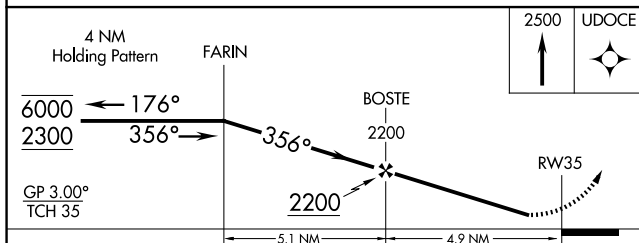
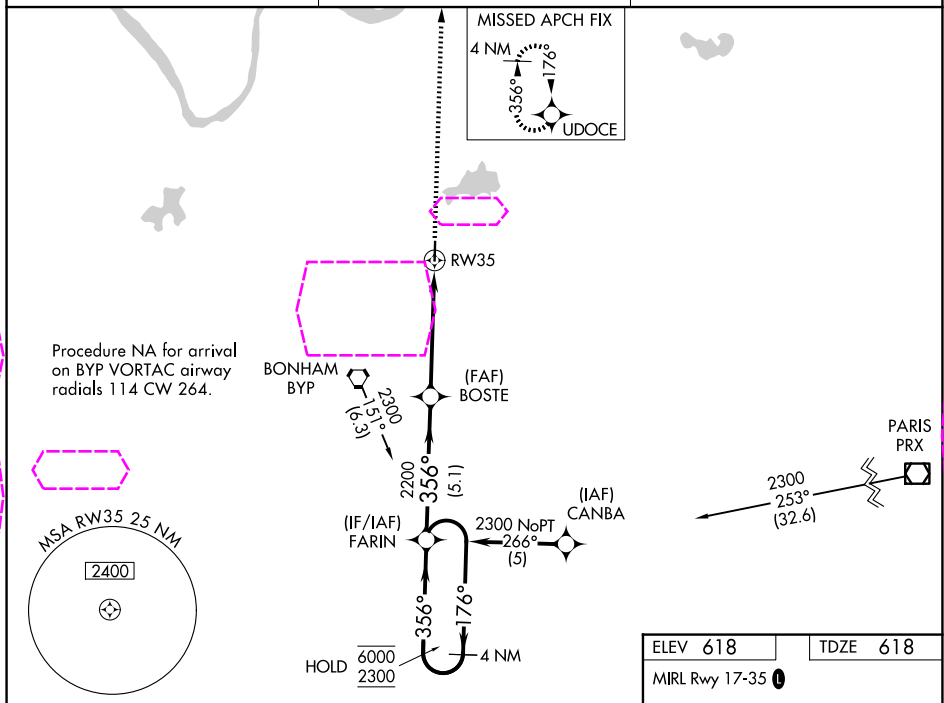
JONES FLD (F000)

RNP APCH - GPS.

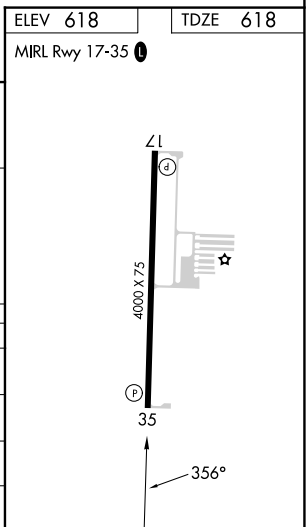
**T** Baro-VNAV NA. Rwy 35 helicopter visibility reduction below 1 SM NA.  
**A** When local altimeter setting not received, use Durant altimeter setting.

**MISSED APPROACH:** Climb to 2500 direct UDOCE and hold.

AWOS-3 PT <b>118.05</b>	FORT WORTH CENTER <b>124.875 370.95</b>	UNICOM <b>122.8</b> (CTAF) <b>0</b>
----------------------------	--------------------------------------------	----------------------------------------



CATEGORY	A	B	C	D
LPV DA	956-1	338 (400-1)	NA	
LNAV/ VNAV DA	1314-2	696 (700-2)	NA	
LNAV MDA	1340-1	722 (800-1)	NA	
CIRCLING	1340-1 722 (800-1)	1400-1 782 (800-1)	NA	



BONHAM, TEXAS  
Amdt 1C 28DEC23

33°37'N-96°11'W

JONES FLD (F00)

RNAV (GPS) RWY 35

SC-2, 07 AUG 2025 to 04 SEP 2025

SC-2, 07 AUG 2025 to 04 SEP 2025.