

SC-2, 10 JUL 2025 to 07 AUG 2025.

BONHAM, TEXAS

AL-6722 (FAA)

25219

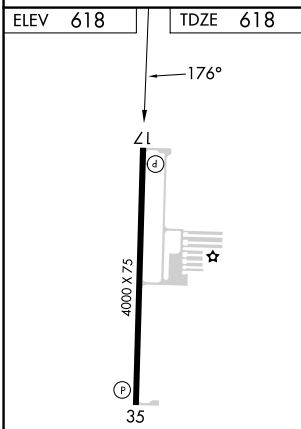
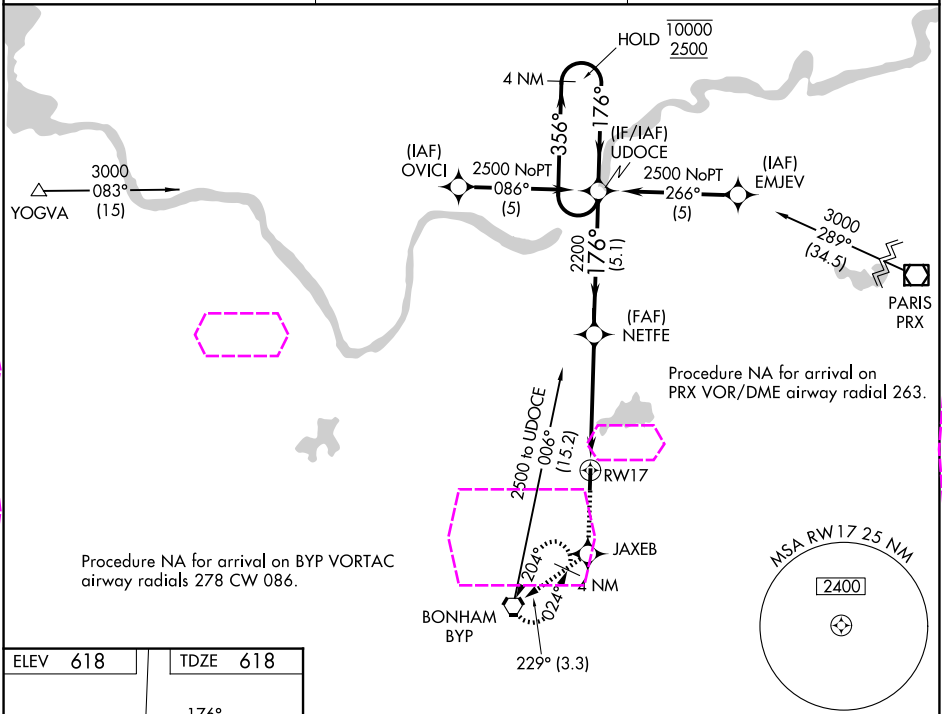
WAAS CH <b>99523</b> <b>W17A</b>	APP CRS <b>176°</b>	Rwy Ldg TDZE <b>618</b> Apt Elev <b>618</b>
--	------------------------	---

# RNAV (GPS) RWY 17

JONES FLD (F00)

RNP APCH - GPS.	MISSED APPROACH: Climb to 2500 direct JAXEB and on track 229° to BYP VORTAC and hold.
-----------------	---

AWOS-3 PT <b>118.05</b>	FORT WORTH CENTER <b>124.875 370.95</b>	UNICOM <b>122.8</b> (CTAF) <b>0</b>
----------------------------	--	--



2500	JAXEB	tr 229°	BYP	UDOC	4 NM Holding Pattern
					GP 3.00° TCH 35
RW17		NETFE 2200	2200		
4.9 NM		5.1 NM			
CATEGORY	A	B	C	D	
LPV DA	906-1	288 (300-1)	NA		
LNAV/VNAV DA	1030-1 1/8	412 (500-1 1/8)	NA		
LNAV MDA	1180-1	562 (600-1)	NA		
CIRCLING	1240-1 622 (700-1)	1400-1 782 (800-1)	NA		

MIRL Rwy 17-35 **0**

BONHAM, TEXAS  
Amdt 2C 28DEC23

33°37'N-96°11'W

# RNAV (GPS) RWY 17

SC-2, 07 AUG 2025 to 04 SEP 2025

SC-2, 07 AUG 2025 to 04 SEP 2025