

ELIZABETHTOWN, KENTUCKY

AL-6712 (FAA)

24361

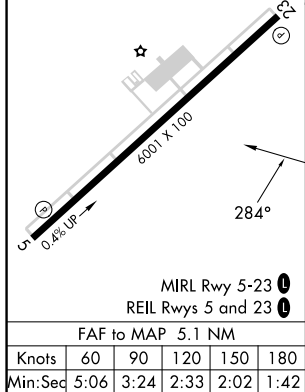
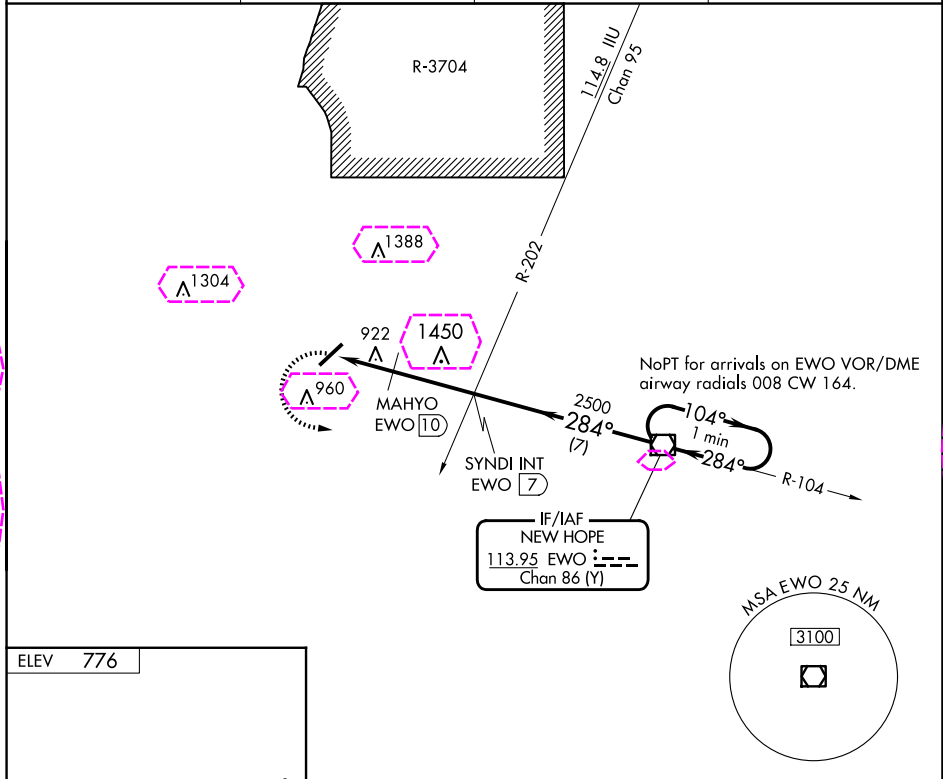
VOR/DME EWO 113.95 Chan 86 (Y)	APP CRS 284°	Rwy Idg TDZE Apt Elev	N/A N/A 776
--	------------------------	-----------------------------	--

VOR-A

ADDINGTON FLD (EKK)

NA When local altimeter setting not received, use Bardstown altimeter setting: increase all MDAs 80 feet and visibility Cat B and Cat C ¼ SM; MAHYO fix minimums: increase visibility Cat C ¼ SM.	MISSED APPROACH: Climbing left turn to 2500 direct to EWO VOR/DME and hold.
--	---

AWOS-3 121,025	LOUISVILLE APP CON 132,075 327.0	CLNC DEL 119.45	UNICOM 123,075 (CTAF) 0
--------------------------	--	---------------------------	--



2500	EWO	SYNDI INT EWO 7	EWO VOR/DME	One Minute Holding Pattern
2500	MAHYO EWO 10	2500	284°	104°
1700*	EWO 12.1	284°	284°	2500
*1820 when using Louisville Init altimeter setting.				
2.1 NM 3 NM 7 NM				
CATEGORY	A	B	C	D
CIRCLING	1700-1¼ 924 (1000-1¼)		1700-2¾ 924 (1000-2¾)	1760-3 984 (1000-3)
MAHYO FIX MINIMUMS				
CIRCLING	1240-1 464 (500-1)	1260-1 484 (500-1)	1420-1¾ 644 (700-1¾)	1760-3 984 (1000-3)

ELIZABETHTOWN, KENTUCKY

Amdt 3B 06OCT22

37°41'N-85°56'W

ADDINGTON FLD (EKK)

VOR-A

SE-1, 10 JUL 2025 to 07 AUG 2025

SE-1, 10 JUL 2025 to 07 AUG 2025

ELIZABETHTOWN, KENTUCKY

AL-6712 (FAA)

25219

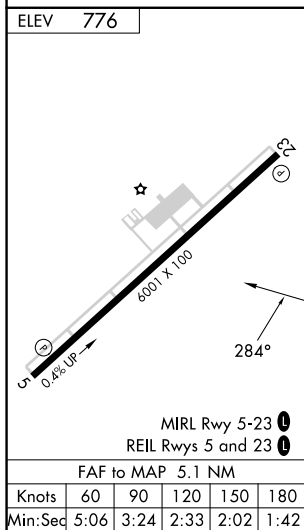
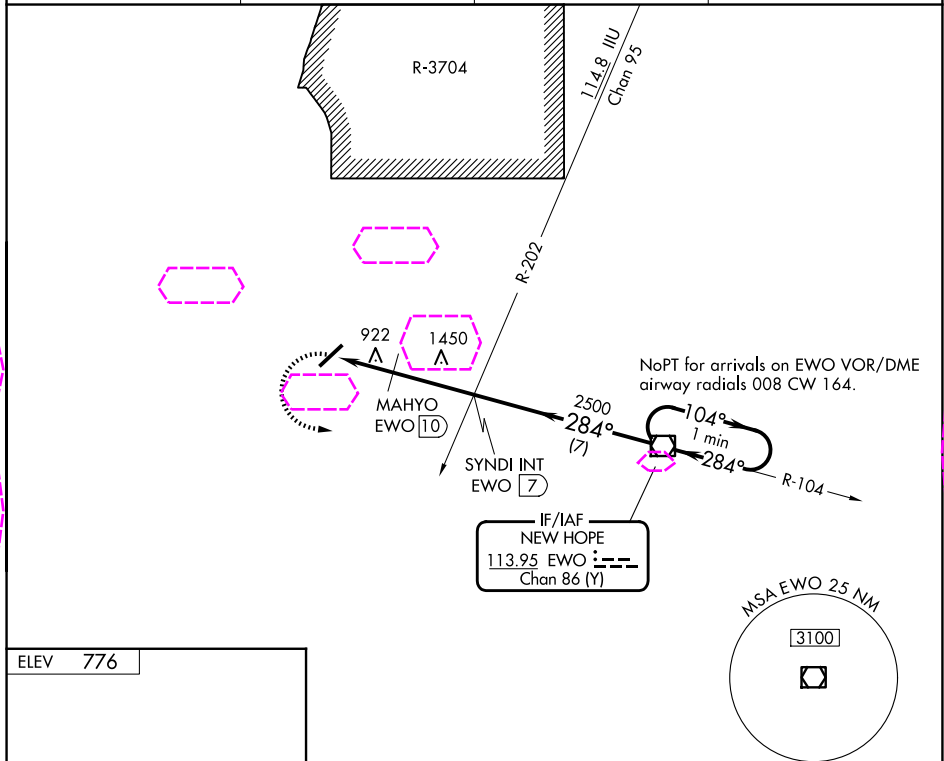
VOR/DME EWO 113.95 Chan 86 (Y)	APP CRS 284°	Rwy Ldg TDZE Apt Elev	N/A N/A 776
--	------------------------	-----------------------------	--

VOR-A

ADDINGTON FLD (EKX)

NA When local altimeter setting not received, use Bardstown altimeter setting: increase all MDAs 80 feet and visibility Cat B and Cat C ¼ SM; MAHYO fix minimums: increase visibility Cat C ¼ SM.	MISSED APPROACH: Climbing left turn to 2500 direct to EWO VOR/DME and hold.
---	---

AWOS-3 118.55	LOUISVILLE APP CON 123.675 327.0	CLNC DEL 119.45	UNICOM 123.075 (CTAF) 0
-------------------------	--	---------------------------	--



--	--	--	--	--

ELIZABETHTOWN, KENTUCKY

Amdt 3B 06OCT22

37°41'N-85°56'W

ADDINGTON FLD (EKX)

VOR-A

SE-1, 07 AUG 2025 to 04 SEP 2025

SE-1, 07 AUG 2025 to 04 SEP 2025