

WAAS CH 77700 W05A	APP CRS 050°	Rwy Idg 6001 TDZE 768 Apt Elev 776
--	------------------------	---

RNAV (GPS) RWY 5
ADDINGTON FLD (EKK)

RNP APCH.

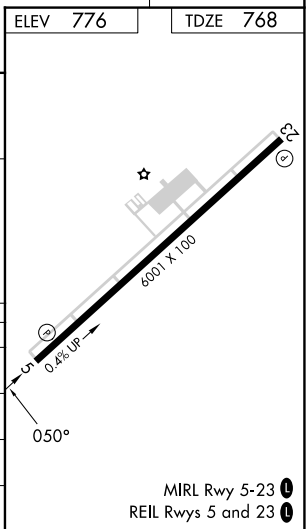
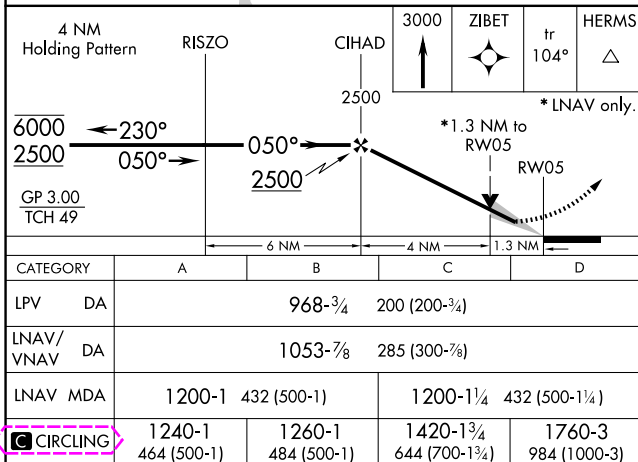
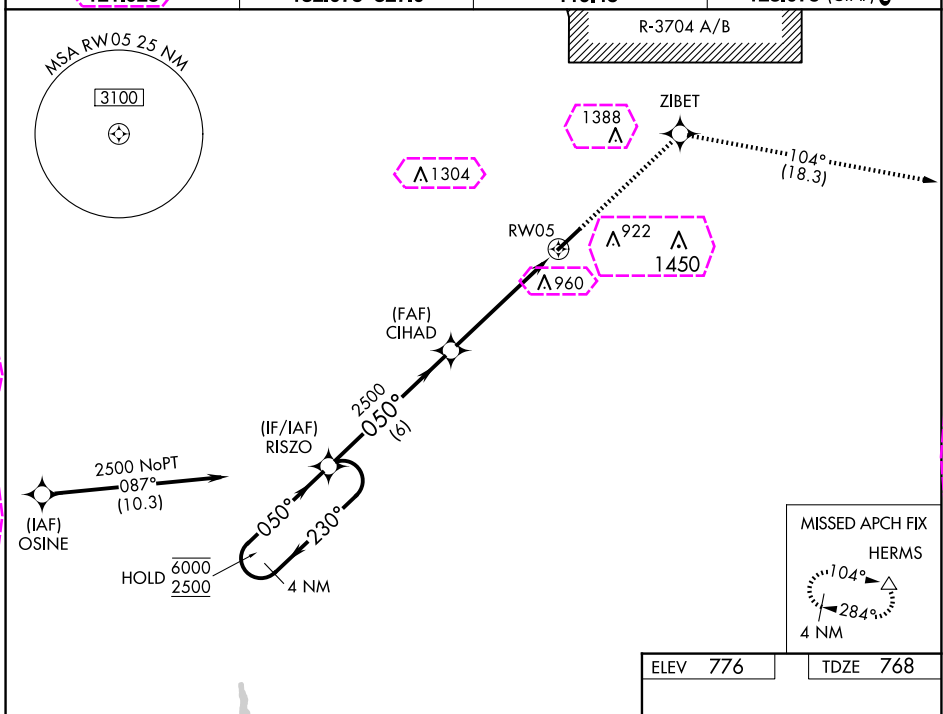
T
A For uncompensated Baro-VNAV systems, LNAV/VNAV NA below -16°C or above 54°C.

MISSED APPROACH: Climb to 3000
direct ZIBET and on track 104° to
HERMS and hold.

AWOS-3
121.025

LOUISVILLE APP CON
132.075 327.0

CLNC DEL
119.45

UNICOM
123.075 (CTAF) 

ELIZABETHTOWN, KENTUCKY
Amdt 1 17JUN21

37°41'N-85°56'W

ADDINGTON FLD (EKK)
RNAV (GPS) RWY 5

ELIZABETHTOWN, KENTUCKY

AL-6712 (FAA)

25219

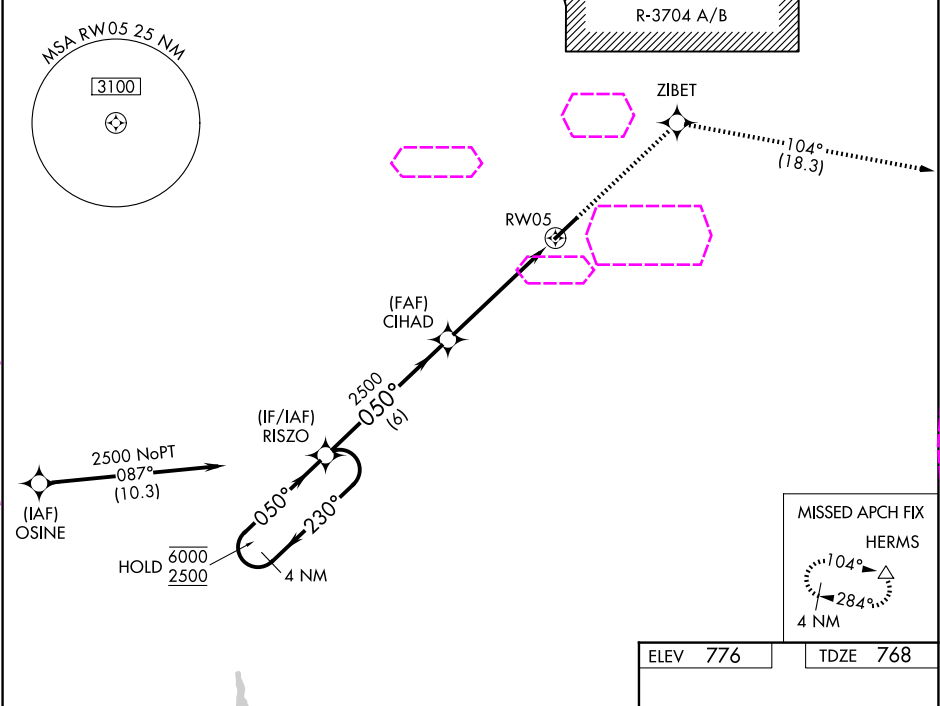
WAAS CH 77700 W05A	APP CRS 050°	Rwy Ldg TDZE 768 Apt Elev 776
--	------------------------	---

RNAV (GPS) RWY 5

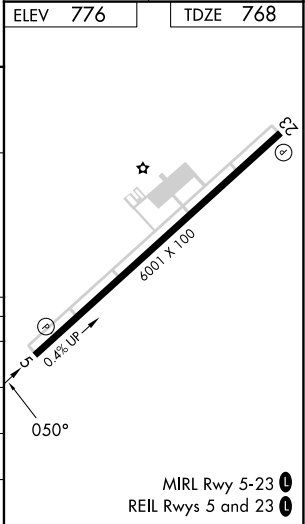
ADDINGTON FLD (EKK)

RNP APCH.	For uncompensated Baro-VNAV systems, LNAV/VNAV NA below -16°C or above 54°C.	MISSED APPROACH: Climb to 3000 direct ZIBET and on track 104° to HERMS and hold.
-----------	--	--

AWOS-3 118.55	LOUISVILLE APP CON 132.075 327.0	CLNC DEL 119.45	UNICOM 123.075 (CTAF) 0
-------------------------	--	---------------------------	--



4 NM Holding Pattern		RISZO	CIHAD	3000	ZIBET	tr 104°	HERMS
6000 2500 GP 3.00 TCH 49		230° 050°	050° 2500	2500	*1.3 NM to RW05	*LNAV only.	
6 NM		4 NM	1.3 NM				
CATEGORY	A	B	C	D			
LPV DA		968-¾	200 (200-¾)				
LNAV/VNAV DA		1053-⅞	285 (300-⅞)				
LNAV MDA	1200-1	432 (500-1)	1200-1¼	432 (500-1¼)			
CIRCLING	1240-1 464 (500-1)	1260-1 484 (500-1)	1420-1¾ 644 (700-1¾)	1760-3 984 (1000-3)			



ELIZABETHTOWN, KENTUCKY
Amdt 1 17JUN21

37°41'N-85°56'W

ADDINGTON FLD (EKK)
RNAV (GPS) RWY 5

MIRL Rwy 5-23
REIL Rwy 5 and 23