

ELIZABETHTOWN, KENTUCKY

AL-6712 (FAA)

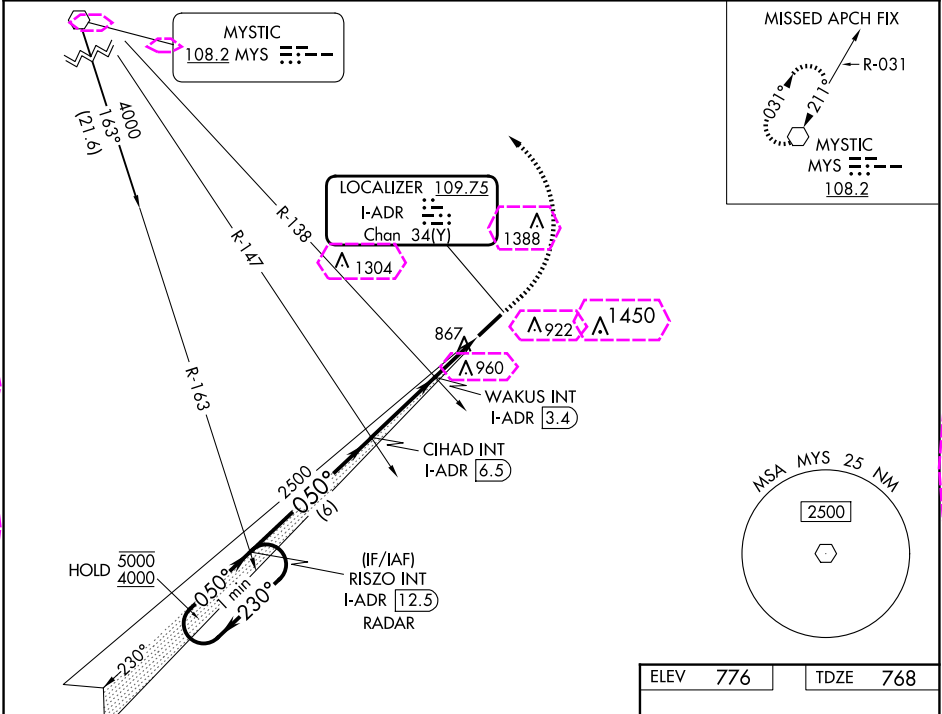
24361

LOC/DME I-ADR	APP CRS	Rwy Idg	6001
109.75	050°	TDZE	768
Chan 34 (Y)		Apt Elev	776

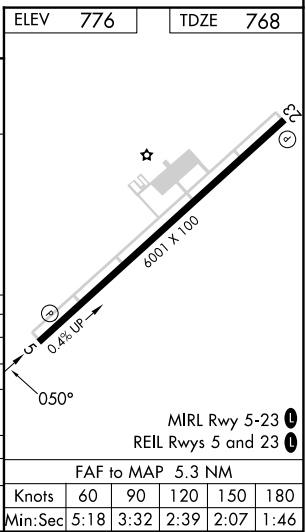
ILS or LOC RWY 5
ADDINGTON FLD (EKK)

MISSED APPROACH: Climb to 1200 then climbing left turn to 3000 on heading 290° and MYS R-140 to MYS VOR and hold.

AWOS-3 121.025	LOUISVILLE APP CON 132.075 327.0	CLNC DEL 119.45	UNICOM 123.075 (CTAF) 1
-------------------	-------------------------------------	--------------------	----------------------------



One Minute Holding Pattern		RISZO INT I-ADR 12.5 RADAR	CIHAD INT I-ADR 6.5	WAKUS INT I-ADR 3.4	I-ADR 2.2	I-ADR 1.2	1200 ↑	3000 hdg 290°	MYS R-140	MYS ◡
5000 4000		←230° 050°→	050°	2500	1260					
GS 3.00° TCH 49			2500							
		6 NM		3.1 NM	1.1 NM	1.1 NM				
CATEGORY	A	B	C	D						
S-ILS 5	968-¾		200 (200-¾)							
S-LOC 5	1260-1	492 (500-1)	1260-1⅜		492 (500-1⅜)					
CIRCLING	1260-1	484 (500-1)	1420-1¾ 644 (700-1¾)		1760-3 984 (1000-3)					
WAKUS FIX MINIMUMS (DUAL VOR RECEIVERS OR DME REQUIRED)										
S-LOC 5	1140-1		372 (400-1)							
CIRCLING	1240-1 464 (500-1)	1260-1 484 (500-1)	1420-1¾ 644 (700-1¾)		1760-3 984 (1000-3)					



ELIZABETHTOWN, KENTUCKY
Orig-A 02DEC21

37°41'N-85°56'W

ADDINGTON FLD (EKK)
ILS or LOC RWY 5

SE-1, 10 JUL 2025 to 07 AUG 2025

SE-1, 10 JUL 2025 to 07 AUG 2025

ELIZABETHTOWN, KENTUCKY

AL-6712 (FAA)

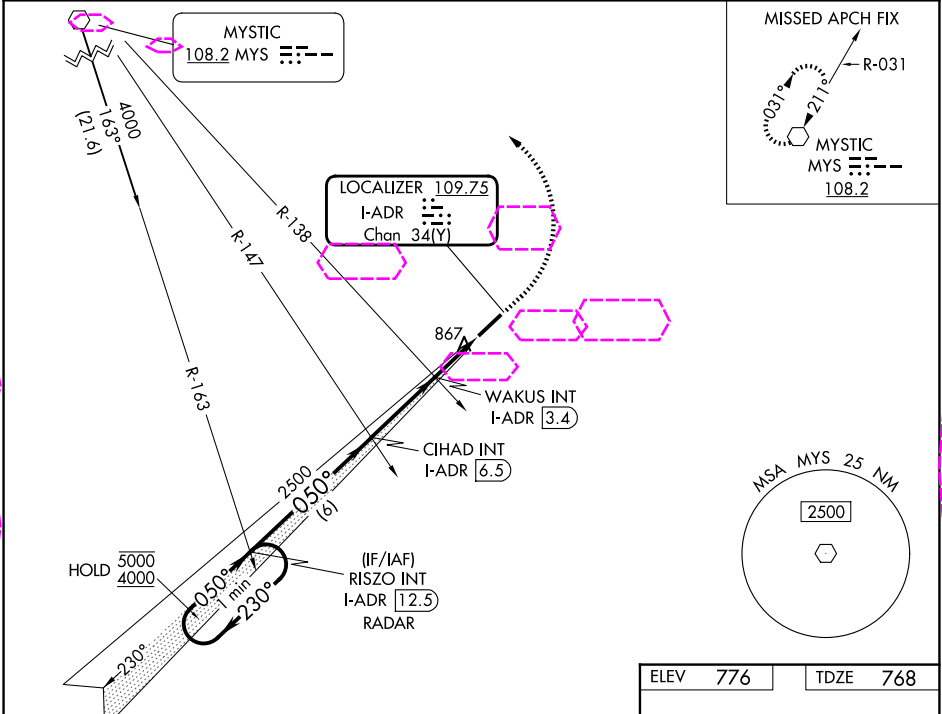
25219

LOC/DME I-ADR 109.75 Chan 34 (Y)	APP CRS 050°	Rwy Ldg TDZE Apt Elev 6001 768 776
--	------------------------	--

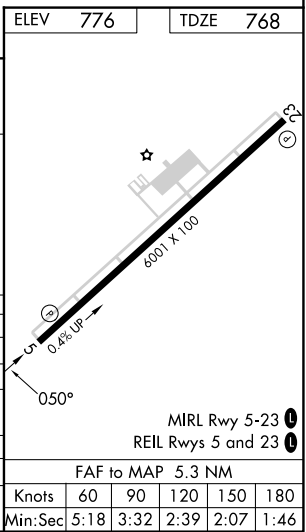
ILS or LOC RWY 5
ADDINGTON FLD (EKK)

MISSED APPROACH: Climb to 1200 then climbing left turn to 3000 on heading 290° and MYS R-140 to MYS VOR and hold.

AWOS-3 118.55	LOUISVILLE APP CON 123.675 327.0	CLNC DEL 119.45	UNICOM 123.075 (CTAF) 0
-------------------------	--	---------------------------	--



One Minute Holding Pattern		RISZO INT I-ADR 12.5 RADAR	CIHAD INT I-ADR 6.5	WAKUS INT I-ADR 3.4	1200 3000 hdg 290°	MYS R-140	MYS ◻
5000 4000		←230° 050°→	050°	2500	I-ADR 2.2	I-ADR 1.2	
GS 3.00° TCH 49			2500	1260			
		6 NM	3.1 NM	1.1 NM	1.1 NM		
CATEGORY	A	B	C	D			
S-ILS 5	968-¾		200 (200-¾)				
S-LOC 5	1260-1	492 (500-1)	1260-1⅜		492 (500-1⅜)		
CIRCLING	1260-1	484 (500-1)	1420-1¾ 644 (700-1¾)		1760-3 984 (1000-3)		
WAKUS FIX MINIMUMS (DUAL VOR RECEIVERS OR DME REQUIRED)							
S-LOC 5	1140-1		372 (400-1)				
CIRCLING	1240-1 464 (500-1)	1260-1 484 (500-1)	1420-1¾ 644 (700-1¾)		1760-3 984 (1000-3)		



ELIZABETHTOWN, KENTUCKY
Orig-A 02DEC21

37°41'N-85°56'W

ADDINGTON FLD (EKK)
ILS or LOC RWY 5

SE-1, 07 AUG 2025 to 04 SEP 2025

SE-1, 07 AUG 2025 to 04 SEP 2025