

APP CRS
091°

Rwy Idg
TDZE **836**
Apt Elev **842**

RNAV (GPS) RWY 9
VINTON VETERANS MEML AIRPARK (VTI)

RNP APCH - GPS.

▼ Straight-in Rwy 9/ Circling Rwy 9 at night, operational VGSi required, remain on or above VGSi glidepath until threshold. Rwy 9 helicopter visibility reduction below 1 SM NA.

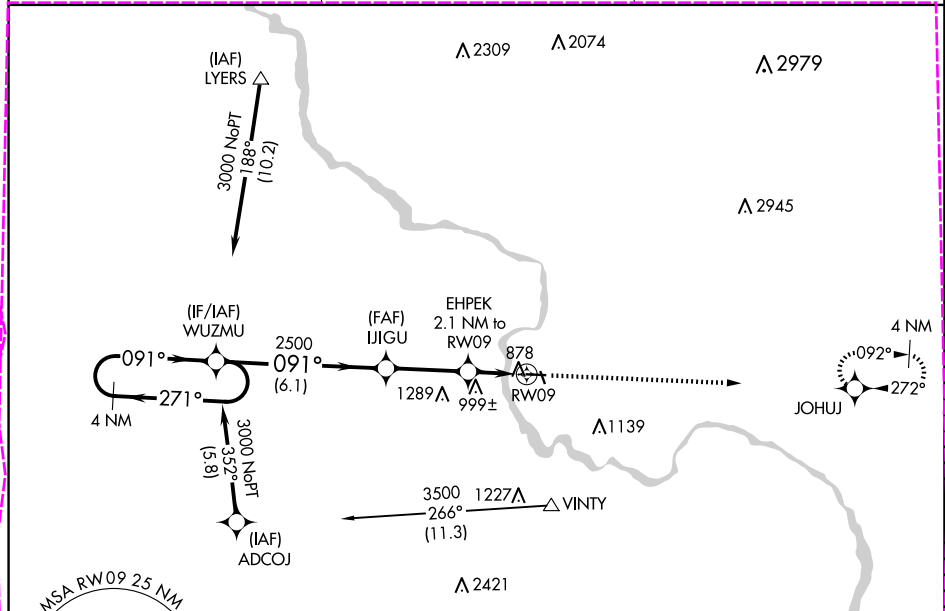
▲ When local altimeter setting not received, use Independence altimeter setting and increase all MDA 60 feet.

MISSED APPROACH: Climb to 3000 direct JOHUJ and hold.

AWOS-3
120.075

CEDAR RAPIDS APP CON ★
134.05 266.8

UNICOM
122.8 (CTAF)



ELEV 842

TDZE 836

4 NM Holding Pattern

WUZMU

IJIGU

EHPEK 2.1 NM to RW09

RW09

3000

2500

1540

3000

JOHUJ

271°

091°

091°

091°

091°

6.1 NM

3 NM

2.1 NM

4000 x 60

2500 x 50

VGSI and descent angles not coincident (VGSI Angle 4.00/TCH 45)

3.04° TCH 45

0.4 % UP

| CATEGORY | A | B | C | D |
|----------|--------------------|--------------------|----|---|
| LNVA MDA | 1260-1 424 (500-1) | | NA | |
| CIRCLING | 1320-1 478 (500-1) | 1360-1 518 (600-1) | NA | |

REIL Rwy 9 and 27
MRL Rwy 9-27

APP CRS
091°

Rwy Ldg
TDZE
836

Apt Elev
842

RNAV (GPS) RWY 9

VINTON VETERANS MEML AIRPARK (VTI)

RNP APCH - GPS.

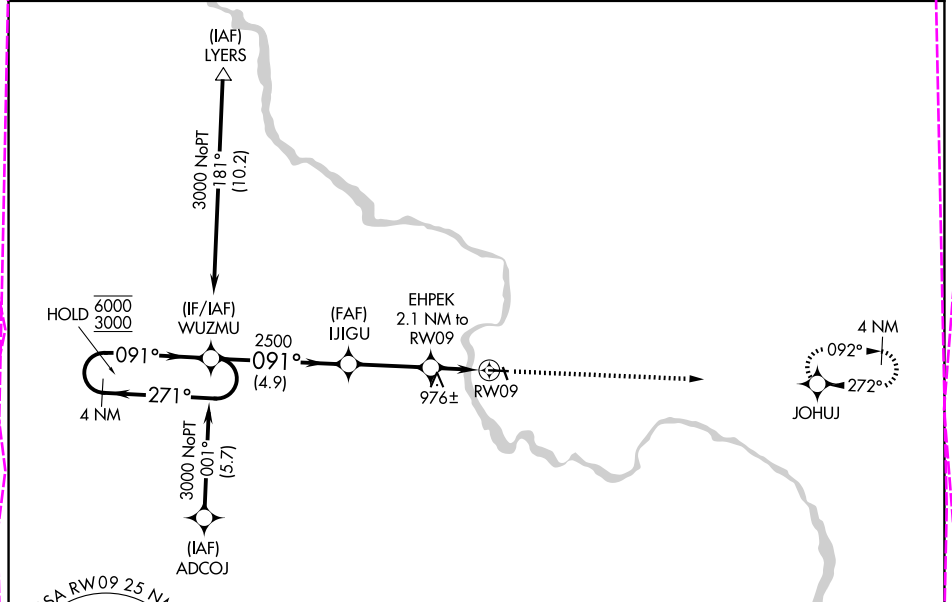
▼

⚠

Rwy 9 helicopter visibility reduction below $\frac{3}{4}$ SM NA. VDP NA when using IIB altimeter setting. When local altimeter setting not received, use IIB altimeter setting and increase all MDA 60 feet.

MISSED APPROACH: Climb to 3000 direct JOHJ and hold.

| | | |
|--------------------------|---|---------------------------------|
| AWOS-3 120.075 | CEDAR RAPIDS APP CON ★ 134.05 266.8 | UNICOM 122.8 (CTAF) ① |
|--------------------------|---|---------------------------------|



ELEV 842

TDZE 836

VGSI and descent angles not coincident (VGSI Angle 4.00/TCH 45)

3000 JOHJ

4 NM Holding Pattern

WUZMU

IJIGU

EHPEK 2.1 NM to RW09

0.9 NM to RW09

6000 ← 271°

3000 → 091°

2500

1540

3.04° TCH 45

0.4 % UP

4000 x 60

2500 x 50

| CATEGORY | A | B | C | D |
|----------|-----------------------|-----------------------|----|---|
| RNAV MDA | 1260-1 | 424 (500-1) | NA | |
| CIRCLING | 1320-1 478 (500-1) | 1360-1 518 (600-1) | NA | |

REIL Rwy 9 and 27 ①
MRL Rwy 9-27 ①