

VINTON, IOWA

AL-6691 (FAA)

22335

WAAS CH <b>62917</b> <b>W27A</b>	APP CRS <b>272°</b>	Rwy Idg <b>4000</b> TDZE <b>839</b> Apt Elev <b>842</b>
--	------------------------	--

# RNAV (GPS) RWY 27

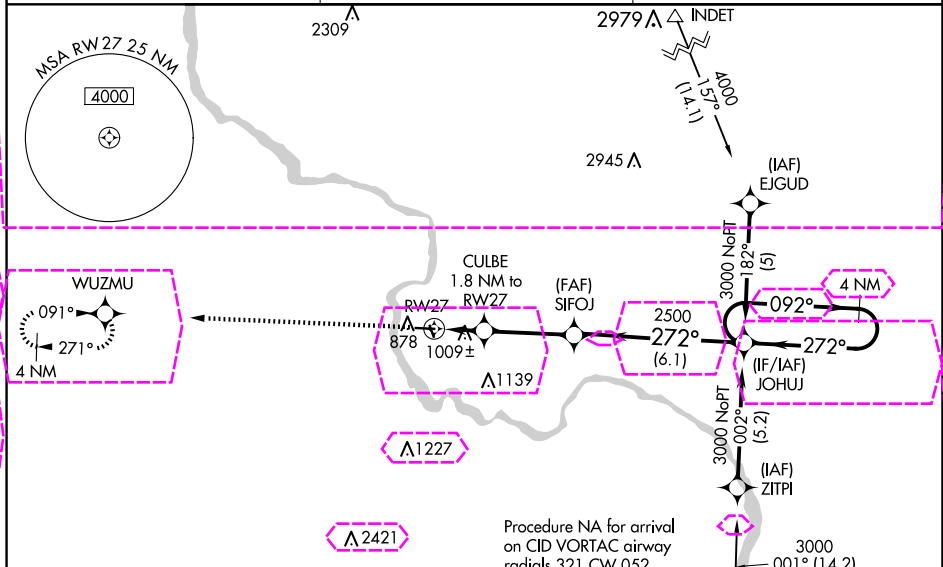
VINTON VETERANS MEML AIRPARK (VTI)

RNP APCH-GPS.

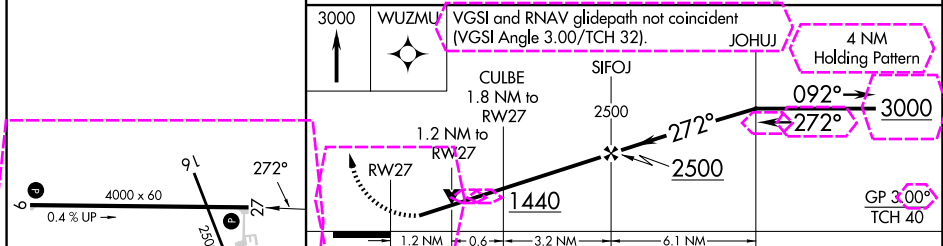
When Circling to Rwy 9 at night, operational VGSI required, remain on or above VGSI glidepath until threshold. For uncompensated Baro-VNAV systems, LNAV/VNAV NA below -16°C or above 54°C. Rwy 27 helicopter visibility reduction below 3/4 SM NA. When local altimeter setting not received, use Independence altimeter setting: increase LPV DA to 1140 feet, LNAV/VNAV DA to 1374 feet and all visibilities 1/2 SM; increase all MDAs 60 feet. Baro-VNAV and VDP NA when using Independence altimeter setting.

MISSED APPROACH: Climb to 3000 direct WUZMU and hold.

AWOS-3 <b>120.075</b>	CEDAR RAPIDS APP CON * <b>134.05 266.8</b>	UNICOM <b>122.8 (CTAF)</b>
--------------------------	---	-------------------------------



ELEV <b>842</b>	TDZE <b>839</b>
-----------------	-----------------



CATEGORY	A	B	C	D
LPV DA	1089-1	250 (300-1)		NA
LNAV/VNAV DA	1323-1 3/4	484 (500-1 3/4)		NA
LNAV MDA	1260-1	421 (500-1)		NA
CIRCLING	1320-1 478 (500-1)	1360-1 518 (600-1)		NA

VINTON, IOWA

Orig-A 01DEC22

VINTON VETERANS MEML AIRPARK (VTI)

42°13'N-92°02'W

# RNAV (GPS) RWY 27

