

AMBLER, ALASKA

AL-6686 (FAA)

25107

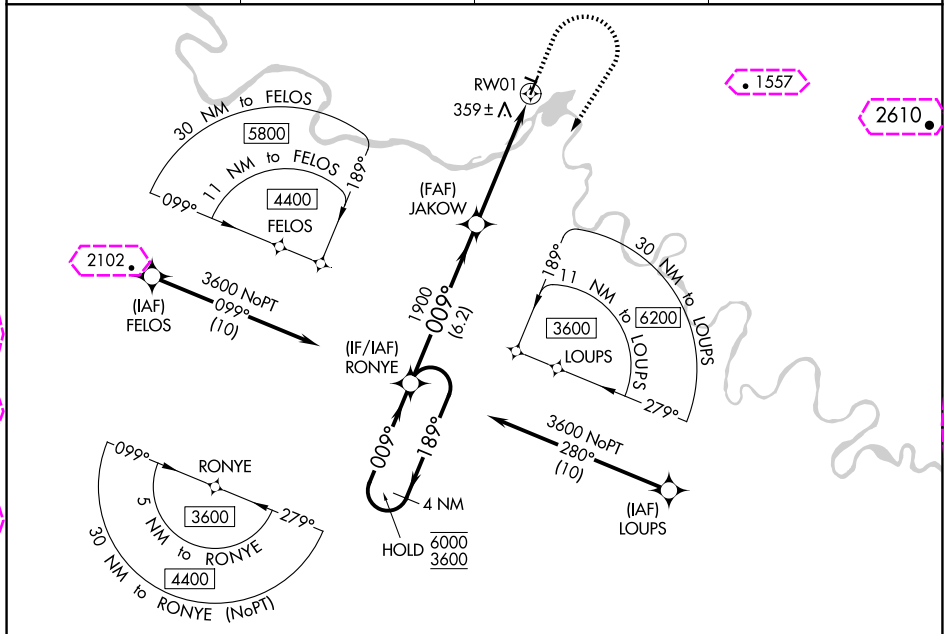
WAAS CH 40439 W01A	APP CRS 009°	Rwy Idg 4000 TDZE 268 Apt Elev 293
--	------------------------	---

RNAV (GPS) RWY 1

AMBLER (AFM) (PAFM)

RNP APCH.	MISSED APPROACH: Climb to 1000 then climbing right turn to 3600 direct RONYE and hold, continue climb-in-hold to 3600. # Missed approach requires minimum climb of 210 feet per NM to 2300.
 Circling NA west of Rwy 1-19. For uncompensated Baro-VNAV systems, LNAV/VNAV NA below -20°C or above 42°C. -36°C	

AWOS-3P 132.1	ANCHORAGE CENTER 119.2 263.0	KOTZEBUE RADIO 122.0	CTAF 122.7 0
-------------------------	--	--------------------------------	------------------------



VGSI and RNAV glidepath not coincident (VGSI Angle 3.00/TCH 25).				1000	3600	RONYE
4 NM Holding Pattern				MIRL Rwy 1-19 and 10-28		
GP 3.00° TCH 40				ELEV 293 TDZE 268		
6.2 NM 2.8 NM 2.3 NM				2400 X 60 1.1% UP 28 4000 X 25 0.5% UP 009°		
CATEGORY	A	B	C	D		
LPV DA#	518-1 250 (300-1)					
LPV DA	686-1 3/8 418 (400-1 3/8)					
LNAV/ VNAV DA	811-1 7/8 543 (600-1 7/8)					
LNAV MDA	1000-1 732 (800-1)	1000-1 1/4 732 (800-1 1/4)	1000-1 7/8 732 (800-1 7/8)	732 (800-1 7/8)		
CIRCLING	1000-1 707 (800-1)	1000-1 1/4 707 (800-1 1/4)	1000-2 707 (800-2)	1000-2 1/4 707 (800-2 1/4)		

AMBLER, ALASKA
Amdt 1B 05DEC19

67°06'N-157°51'W

AMBLER (AFM) (PAFM)
RNAV (GPS) RWY 1

AMBLER, ALASKA

AL-6686 (FAA)

25219

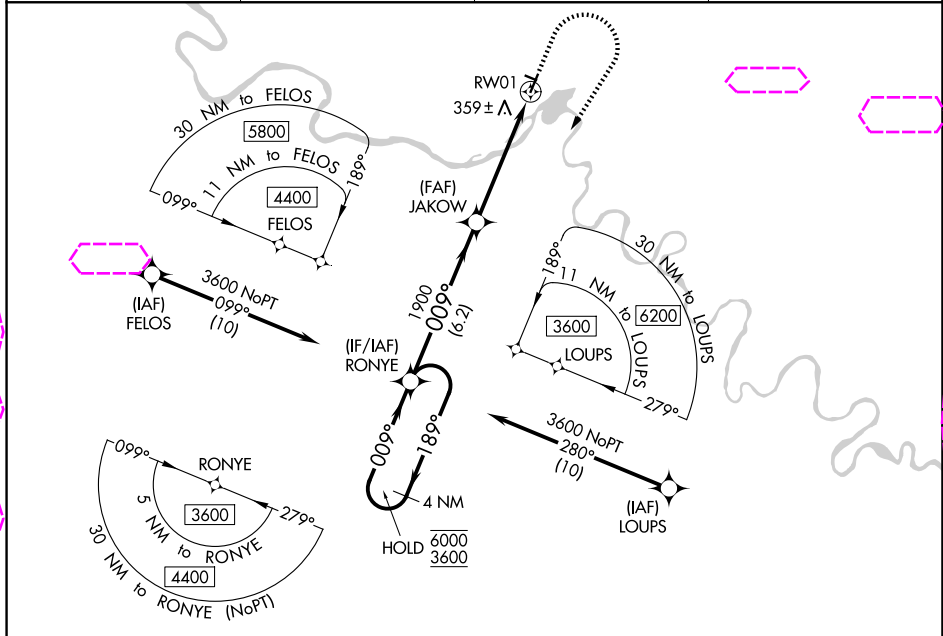
WAAS CH 40439 W01A	APP CRS 009°	Rwy Ldg 4000 TDZE 268 Apt Elev 293
--	------------------------	---

RNAV (GPS) RWY 1

AMBLER (AFM) (PAFM)

RNP APCH.	MISSED APPROACH: Climb to 1000 then climbing right turn to 3600 direct RONYE and hold, continue climb-in-hold to 3600. # Missed approach requires minimum climb of 210 feet per NM to 2300.
 Circling NA west of Rwy 1-19. For uncompensated Baro-VNAV systems, LNAV/VNAV NA below -20°C or above 42°C. -36°C	

AWOS-3P 132.1	ANCHORAGE CENTER 119.2 263.0	KOTZEBUE RADIO 122.0	CTAF 122.7 0
-------------------------	--	--------------------------------	------------------------



VGSI and RNAV glidepath not coincident (VGSI Angle 3.00/TCH 25).				1000	3600	RONYE		
4 NM Holding Pattern RONYE				↑	↷	✦		
6000 ← 189° → 009° → 1900				*2.3 NM to RW01				
GP 3.00° TCH 40				*LNAV only.				
6.2 NM				RW01				
2.8 NM								
2.3 NM								
CATEGORY	A	B	C	D	ELEV 293 TDZE 268			
LPV DA#	518-1 250 (300-1)							
LPV DA	686-1⅜ 418 (400-1⅜)							
LNAV/VNAV DA	811-1⅞ 543 (600-1⅞)							
LNAV MDA	1000-1 732 (800-1)	1000-1¼ 732 (800-1¼)	1000-1⅞ 732 (800-1⅞)					
CIRCLING	1000-1 707 (800-1)	1000-1¼ 707 (800-1¼)	1000-2 707 (800-2)	1000-2¼ 707 (800-2¼)				

AMBLER, ALASKA
Amdt 1B 05DEC19

67°06'N-157°51'W

AMBLER (AFM) (PAFM)
RNAV (GPS) RWY 1