

GOODYEAR, ARIZONA

AL-6648 (FAA)

19059

WAAS CH 42839 W03A	APP CRS 030°	Rwy Idg 8500 TDZE 954 Apt Elev 969
--	------------------------	---

RNAV (GPS) RWY 3

PHOENIX GOODYEAR (GYR)

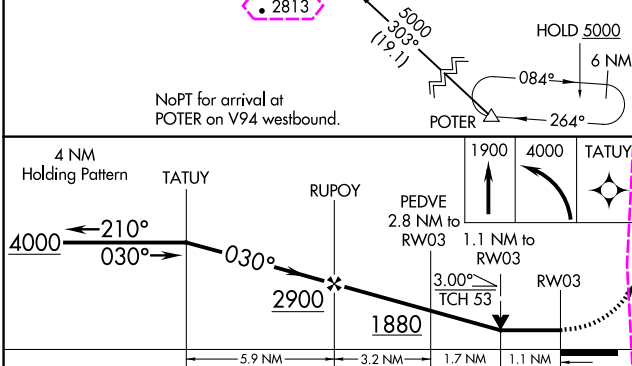
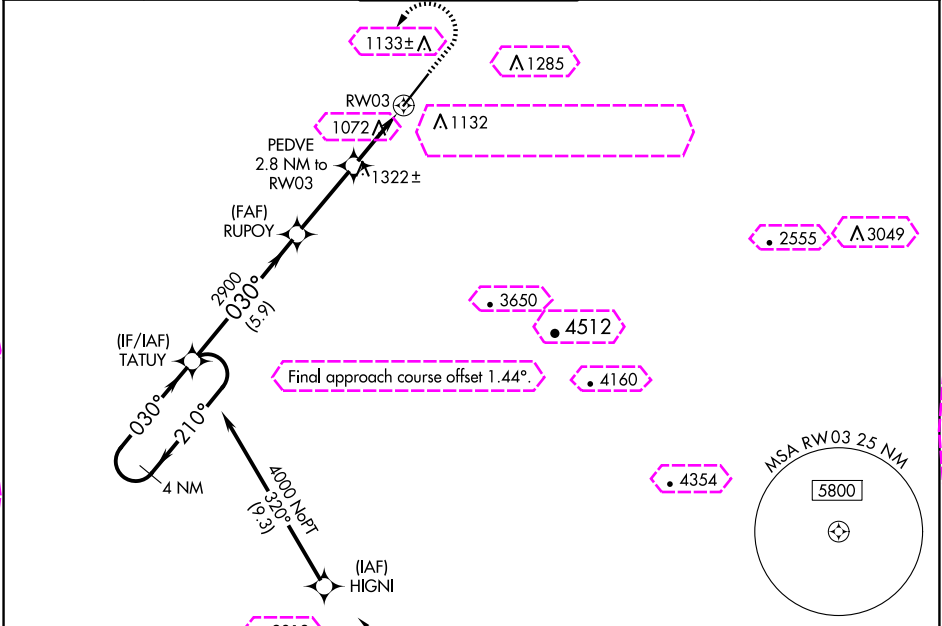
RNP APCH.

▼ Procedure NA at night. Helicopter visibility reduction below $\frac{3}{4}$ SM NA. VDP NA when using Phoenix Sky Harbor Intl altimeter setting. When local altimeter setting not received, use Phoenix Sky Harbor Intl altimeter setting: increase all MDA 80 feet and visibility LP/LNAV Cat C/D and Circling Cat C $\frac{1}{4}$ SM.

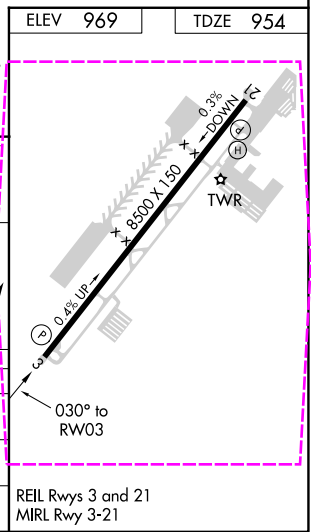
▲ NA

MISSED APPROACH: Climb to 1900 then climbing left turn to 4000 direct TATUY and hold.

ATIS 118.35	LUKE APP CON ★ 125.45 263.125	GOODYEAR TOWER ★ 120.1 (CTAF) 239.3	GND CON 121.7	UNICOM 122.95
-----------------------	---	---	-------------------------	-------------------------



CATEGORY	A	B	C	D
LP MDA	1340-1	386 (400-1)	1340-1 $\frac{1}{8}$	386 (400-1 $\frac{1}{8}$)
LNAV MDA	1580-1	626 (700-1)	1580-1 $\frac{3}{4}$	626 (700-1 $\frac{3}{4}$)
CIRCLING	1580-1	611 (700-1)	1860-2 $\frac{3}{4}$ 891 (900-2 $\frac{3}{4}$)	1920-3 951 (1000-3)



GOODYEAR, ARIZONA
Amdt 1A 08NOV18

33°25'N-112°23'W

PHOENIX GOODYEAR (GYR)
RNAV (GPS) RWY 3

SW-4, 10 JUL 2025 to 07 AUG 2025

SW-4, 10 JUL 2025 to 07 AUG 2025

GOODYEAR, ARIZONA

AL-6648 (FAA)

25219

WAAS CH 42839 W03A	APP CRS 030°	Rwy Ldg 8500 TDZE 954 Apt Elev 969
--	------------------------	---

RNAV (GPS) RWY 3

PHOENIX GOODYEAR (GYR)

RNP APCH.

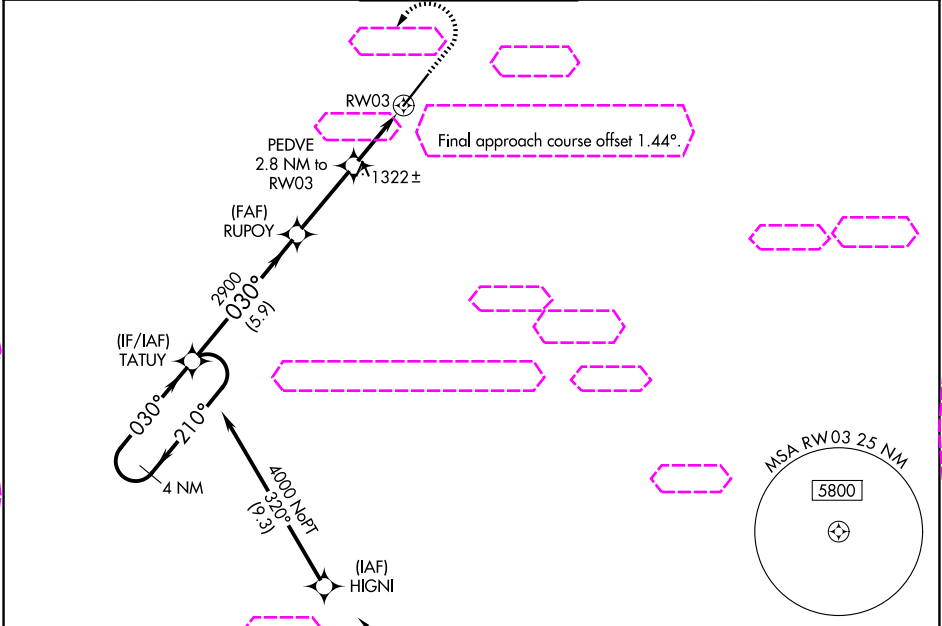
▼

NA

Procedure NA at night. Helicopter visibility reduction below ¾ SM NA. VDP NA when using Phoenix Sky Harbor Intl altimeter setting. When local altimeter setting not received, use Phoenix Sky Harbor Intl altimeter setting: increase all MDA 80 feet and visibility LP/LNAV Cat C/D and Circling Cat C ¼ SM.

MISSED APPROACH: Climb to 1900 then climbing left turn to 4000 direct TATUY and hold.

ATIS 118.35	LUKE APP CON ★ 125.45 263.125	GOODYEAR TOWER ★ 120.1 (CTAF) 239.3	GND CON 121.7	UNICOM 122.95
-----------------------	---	---	-------------------------	-------------------------



ELEV 969

TDZE 954

4 NM Holding Pattern

TATUY

RUPOY

PEDVE 2.8 NM to RW03

POTER

1900

4000

TATUY

1.1 NM to RW03

3.00° TCH 53

1880

5.9 NM

3.2 NM

1.7 NM

1.1 NM

4000

210°

030°

030°

2900

1880

084°

264°

6 NM

0.4% Up

0.3% Down

TWR

030°

CATEGORY	A	B	C	D
LP MDA	1340-1	386 (400-1)	1340-1⅛	386 (400-1⅛)
LNAV MDA	1580-1	626 (700-1)	1580-1¾	626 (700-1¾)
CIRCLING	1580-1	611 (700-1)	1860-2¾ 891 (900-2¾)	1920-3 951 (1000-3)

REIL Rwy 3 and 21
MIRL Rwy 3-21

SW-4, 07 AUG 2025 to 04 SEP 2025

SW-4, 07 AUG 2025 to 04 SEP 2025

GOODYEAR, ARIZONA
Amdt 1A 08NOV18

33°25'N-112°23'W

PHOENIX GOODYEAR (GYR)
RNAV (GPS) RWY 3