

MESA, ARIZONA

AL-6647 (FAA)

24137

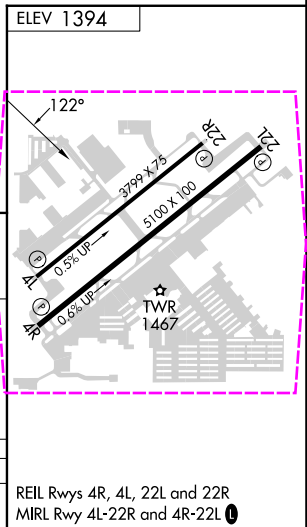
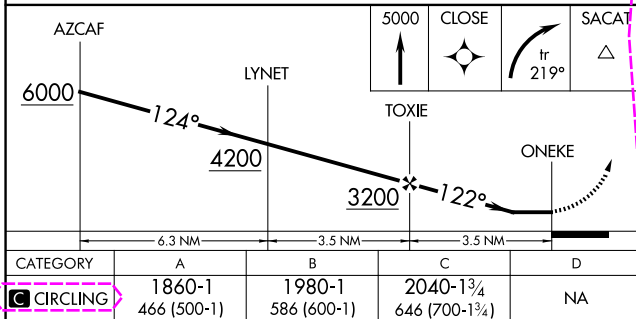
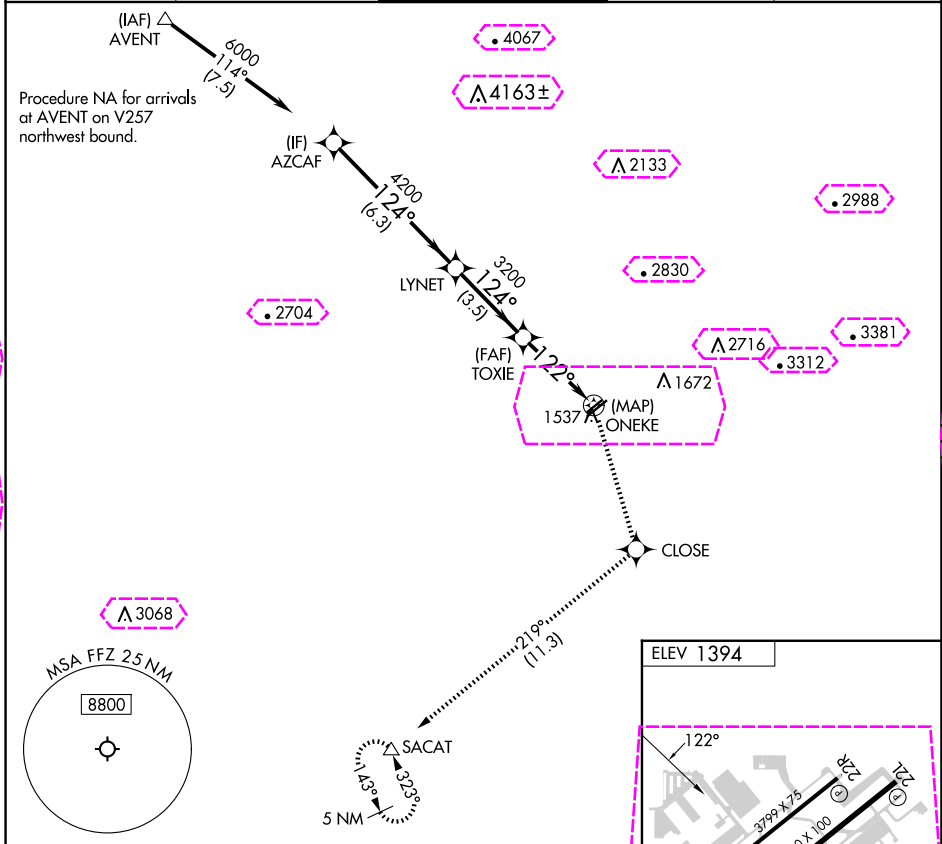
APP CRS	Rwy Idg	N/A
122°	TDZE	N/A
	Apt Elev	1394

RNAV (GPS)-B

FALCON FLD (F'F'Z)

RNP APCH.	MISSED APPROACH: Climb to 5000 direct CLOSE and right turn on track 219° to SACAT and hold, continue climb-in-hold to 5000.
▼ Circling Rwy 22L, 22R NA at night. Circling NA for Cat C southeast of Rwy 4R-22L.	

ATIS 118.25	PHOENIX APP CON 120.7 239.0	FALCON TOWER * 124.6 (CTAF) 0	GND CON 121.3	UNICOM 122.95
----------------	--------------------------------	----------------------------------	------------------	------------------



MESA, ARIZONA
Amdt 1 12AUG21

33°28'N-111°44'W

FALCON FLD (F'F'Z)
RNAV (GPS)-B

SW-4, 10 JUL 2025 to 07 AUG 2025

SW-4, 10 JUL 2025 to 07 AUG 2025

MESA, ARIZONA

AL-6647 (FAA)

25219

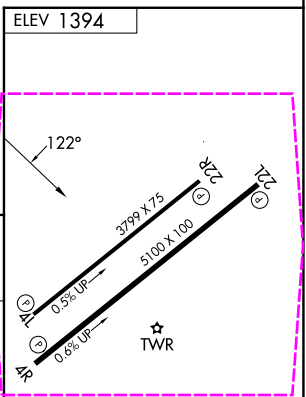
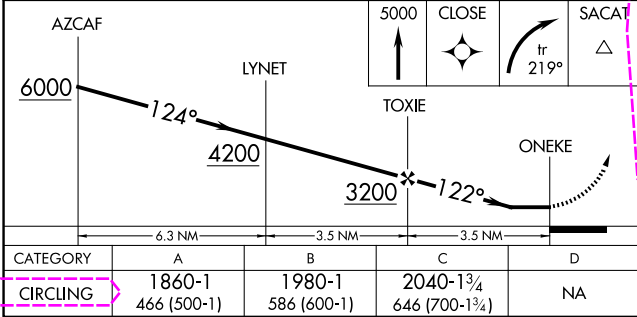
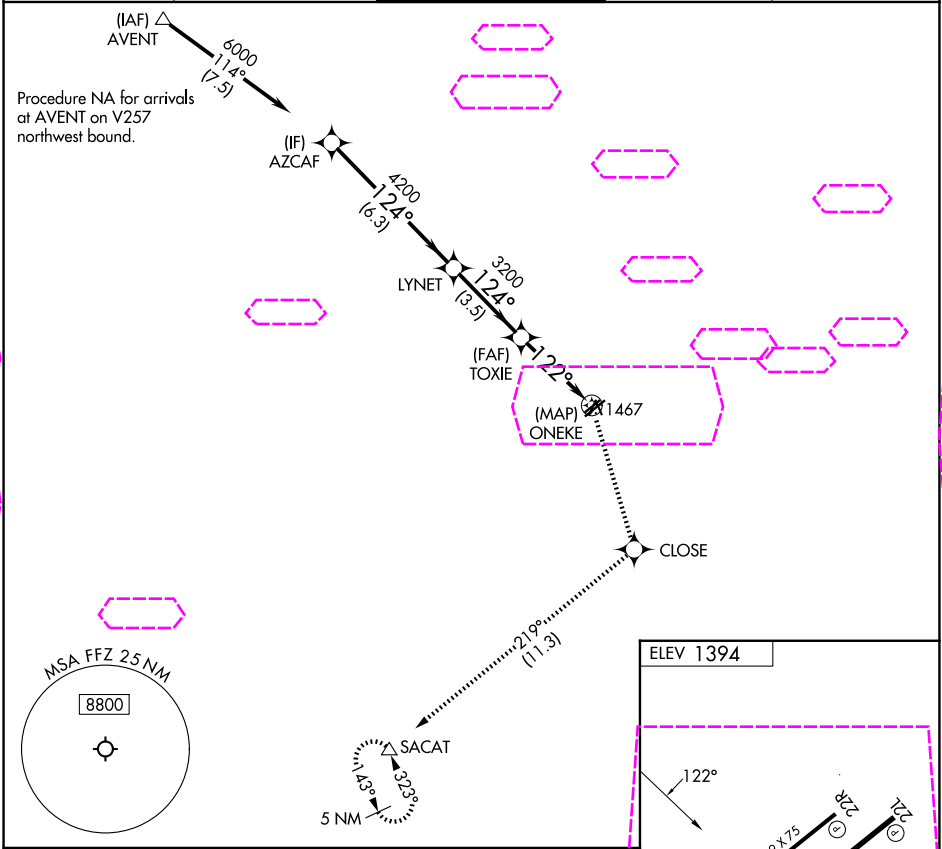
APP CRS	Rwy Ldg	N/A
122°	TDZE	N/A
	Apt Elev	1394

RNAV (GPS)-B

FALCON FLD (F'F'Z)

RNP APCH.	MISSED APPROACH: Climb to 5000 direct CLOSE and right turn on track 219° to SACAT and hold, continue climb-in-hold to 5000.
▼ Circling Rwy 22L, 22R NA at night. Circling NA for Cat C southeast of Rwy 4R-22L.	

ATIS 118.25	PHOENIX APP CON 120.7 239.0	FALCON TOWER * 124.6 (CTAF) 0	GND CON 121.3	UNICOM 122.95
----------------	--------------------------------	----------------------------------	------------------	------------------



CATEGORY	A	B	C	D
CIRCLING	1860-1 466 (500-1)	1980-1 586 (600-1)	2040-1¾ 646 (700-1¾)	NA

MESA, ARIZONA
Amdt 1 12AUG21

33°28'N-111°44'W

FALCON FLD (F'F'Z)
RNAV (GPS)-B

SW-4, 07 AUG 2025 to 04 SEP 2025

SW-4, 07 AUG 2025 to 04 SEP 2025